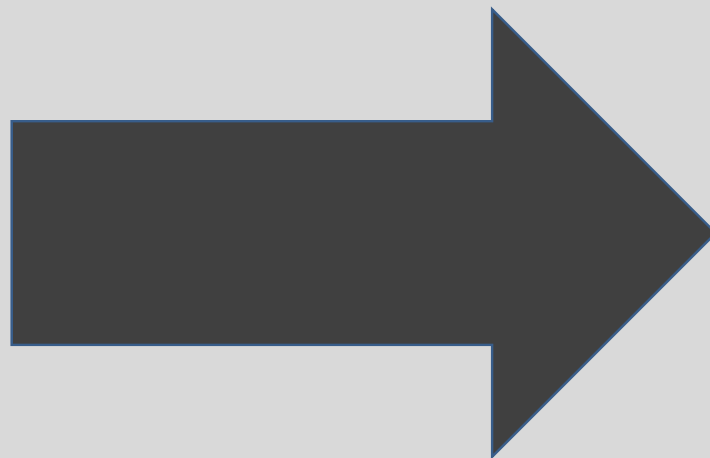




# Welcome

Waste Management of Canada Corporation is pleased to introduce an exciting new approach to waste management in the Region:  
The ***Beechwood Road Environmental Centre***

Please take a few moments to browse the display material and talk to our staff and consultants.







## The Beechwood Road Environmental Centre At a Glance

Waste Management of Canada Corporation is proposing a new, integrated multi-purpose waste management facility to serve the Town of Greater Napanee and the surrounding region. Waste Management has a strong commitment to Napanee, its immediate neighbours and the surrounding communities. This commitment extends beyond just meeting regulatory standards to being a responsible environmental steward and an engaged corporate citizen.

The Beechwood Road Environmental Centre will focus on waste diversion, diverting as much waste as possible away from disposal to reuse and recycling purposes.

It will also include:

- Additional lands set aside for community sports and recreational purposes;
- Wildlife habitat;
- A state-of-the-art, environmentally engineered landfill for disposal of residual waste;
- Clean renewable energy generation.

*Below is an artist rendering of the proposed facility, which will inevitably change as a result of the consultation process.*







## Diversion and Recycling

The proposed Beechwood Road Environmental Centre (BREC) facility will be aligned with Napanee's long-term waste management goals and the province's environmental values and policy statements relating to zero waste, climate change and green energy creation.

*"Today, our region diverts less than 30 per cent of waste away from disposal. We believe our Environmental Centre will help significantly increase the percentage of material that we can divert for re-use and re-cycling."*

- LINDA COOPER

*BREC Community Relations Representative*

To pursue this vision, our facility will include a number of industrial, commercial and residential waste diversion operations that will maximize the value of the resources we receive. These include:

- **Material Recycling Facility**, which will house the latest technology to sort and process paper, glass, plastics, metals and electronics that can be processed into products. The facility will help divert thousands of tonnes of material from disposal, reducing the need for new resources to create products;
- **Construction and Demolition Material Facility**, which will receive construction and demolition materials for re-use and recycling. Many of the materials are valuable and can be re-used, thereby avoiding disposal;
- **Residential Diversion Facility**, which will allow local residents to drop off household hazardous and electronic waste and household recyclables including scrap wood, plastic, metal, paper, drywall, concrete, paints, and more. These recyclables will be transported to the material recycling or construction and demolition facilities for processing;
- **Organics Processing Facility**, which will have the capacity to receive and process compostable waste from industrial, commercial and institutional sources; and,
- **Electronic Waste Handling Facility** will also be included at BREC.





## Community Development

*“The proposed Beechwood Road Environmental Centre builds on our long standing commitment of being an engaged and responsible corporate citizen to create significant community and economic benefits.”*

- RICK SEMENIUK

*District Manager for Eastern Ontario*

- **Economic Development:** The Beechwood Road Environmental Centre (BREC) will create up to 75 new, green jobs in waste diversion, disposal and green energy facilities. Economic benefits will also extend to the larger community through community host agreements, as well as funds to support local projects. In addition, revenue opportunities will be created from waste diversion activities for local processors and downstream activities related to recycling and re-use.
- **Wildlife Habitat:** An on-site wildlife habitat centre has been opened to the public and will continue to serve as an education centre for the community. Our current landfill facility has received international recognition for its contribution to wildlife habitat conservation in the form of a Wildlife Habitat Council (WHC) certification in 2006.
- **Recreation:** Waste Management’s current landfill operation has extensive non-operational lands. Some space will be required to support the facility’s operation, but other lands will be dedicated for community uses that could include sports fields, biking and hiking trails and a leash-free dog park.
- **Community input** will be an important part of determining the ultimate use of non-operational areas at the BREC facility. Residents and community leaders have told us that they value increasing the amount of available recreational and community lands. We are responding by setting aside space surrounding our operations for dedicated community use.







## Environmentally Engineered Landfill

We plan to develop a new state-of-the-art landfill with a capacity of about 13 million tonnes and an expected life of approximately 20 years for the disposal of residual material.

*“The Beechwood Road Environmental Centre will include a new, state-of-the-art, environmentally engineered landfill that will receive materials that cannot be diverted towards re-use, recovery or recycling”*

- RANDY HARRIS

*BREC Facility Manager*

- The new landfill will accept a significantly smaller amount of waste than was previously proposed.
- The new landfill will be constructed on a new area within the current site, using the latest technology and processes to ensure the highest available standards of safety and efficiency.
- This new engineered landfill will include a liner system, leachate collection and monitoring system to continuously protect ground and surface water.
- Landfill gas is created naturally through the decomposition of waste in landfills. Like wind and solar power, landfill gas is a natural resource that can be harnessed to produce clean energy.
- The facility will be able to generate six megawatts of electricity; enough energy to power the equivalent of 6,000 homes for a year (e.g., a community the size of Napanee).







## Similar Facilities

Several facilities similar to the Beechwood Road Environmental Centre exist and have proven to be a sustainable way of waste management for cities and towns similar to Napanee. These include the Waterloo Waste Management Centre, Peel Integrated Waste Management Facility and the IWMF Kingston.

### Waterloo Waste Management Centre (WMC)

The Region of Waterloo's Waste Management Centre (WMC) includes over 10 programs and activities consisting of various waste reduction and recycling strategies including: engineered, sanitary landfill; materials recycling facility; centralized composting; household hazardous waste; environmental education; and, other waste diversion programs. By implementing the WMC, the Region of Waterloo has been able to manage waste sustainably and generate revenue for the Region.



Waterloo WMC



Peel Waste Management Facility

### Peel Integrated Waste Management Facility

Largest of its kind in Canada, the Peel Integrated Waste Management Facility consists of the following components: a single stream material recovery facility (MRF); a waste transfer station and an organics composting plant. Waste Management of Canada Corporation is contracted to operate and maintain the MRF, as well as market all fibre material.

### IWMF City of Kingston

The City of Kingston is now in the second phase of its four stage development of a long-term strategy to manage organic and residual solid waste as part of an Integrated Waste Management system covering a 25 year period.







## Our Community Involvement

Responsible corporate citizenship is important to us and contributing to the health of its community will always play an important role in how Waste Management conducts business in the Town of Greater Napanee.

We provide employment for Napanee residents and many of the company's employees and managers are part of this community; they live, work, and raise their families here.

Locally, we actively support various recreational sports activities and organizations, as well as special events such as:

- Canadian Cancer Society Relay for Life
- Deseronto Storm Hockey Team
- Deseronto Yacht Club Kids Fishing Derby
- Ducks Unlimited
- Lennox Addington Seniors Outreach Services Friday Seniors Bus
- Napanee Scarecrow Festival
- Napanee Rod and Gun Club
- NDSS Biology Awards
- U18 Women's Hockey Tournament 2008
- Walk for Lennox Addington County General Hospital
- 2010 Ontario Men's Curling Championship





## What's different this time?

The proposed Beechwood Road Environmental Centre (BREC) at the Napanee site is very different from what was proposed previously. The table below highlights the main differences between the previous and current proposals.

Characteristics	Previous Proposal	Current Proposal
Context for proposed undertaking	Landfill expansion only	BREC comprising diversion, composting, educational and other components. New landfill proposed for residual waste disposal.
Landfill airspace capacity	25 million m <sup>3</sup>	13 million m <sup>3</sup>
Rate of receiving waste	750,000 tonnes per year	400,000 tonnes per year
Reclamation of wastes	870,200 tonnes from south landfill	none
Proposed use of south Landfill	Reclamation of wastes, installation of liner system and expansion of about 9 million m <sup>3</sup> of airspace	Closure of south landfill
Area of footprint	109.5 ha	approximately 51 - 55 ha
Top elevation (north landfill)	173 mASL	158-173 mASL



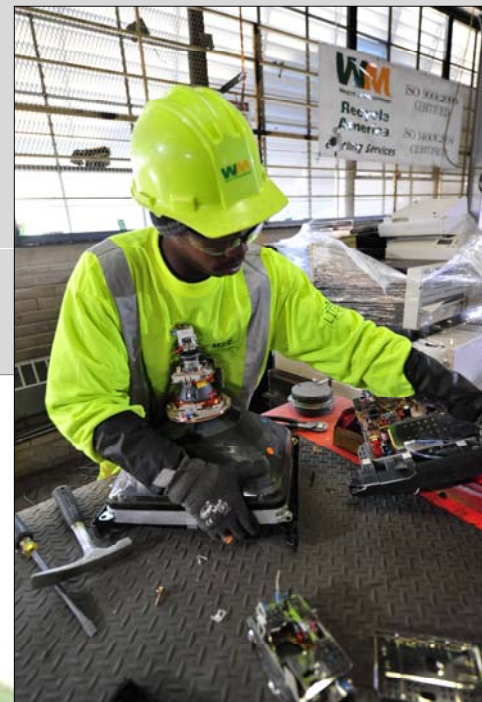




## Approval Requirements

The Beechwood Road Environmental Centre will require various environmental approvals and permits from regulatory agencies to ensure protection of the environment and health and safety of residents.

- Components such as the waste electric and electronic equipment and public drop-off facility improvements require no formal approvals and have already been implemented at the current site.
- Some components such as the materials recycling facility, construction and demolition recovery facility and composting will require Certificates of Approval.
- The new landfill footprint for disposal of residual wastes will require an Environmental Assessment (EA).
- The first step in the EA process is the preparation of Terms of Reference (TOR).
- The Terms of Reference provide a framework (or work plan) for conducting the EA studies and assessing predicted impacts of the project.
- Public Consultation will be key throughout the EA and other processes.





## The Undertaking

In EA terms, the project proposed by the proponent is referred to as “the undertaking” and is the subject of the environmental assessment studies. Things considered in the EA include alternative methods of implementing the undertaking, existing environmental conditions, predicted impacts of the undertaking on the environment, mitigation measures to avoid or reduce adverse effects and the assessment of residual effects.

- Prior to initiating the EA studies, we considered a wide range of alternatives to the proposed undertaking that are available to us as a private business.
- The alternatives to the undertaking that we considered ranged from doing nothing to establishing a new landfill elsewhere.
- We concluded that constructing and operating a waste management system that diverts as much waste as possible from landfill disposal, while providing local jobs, community facilities and economic benefits was preferred. A landfill for disposal of residual wastes, that cannot be diverted, is a component of the system.
- The current landfill will be closed.
- In summary, the purpose of the undertaking is the construction/operation of a new landfill developed to modern standards, which will be one component of an integrated waste management facility, known as the Beechwood Road Environmental Centre, to meet the demand and need for waste disposal sources in eastern Ontario.







## Terms of Reference

The Terms of Reference (referred to as TOR) is the first step in the EA process. The TOR provides a framework (or work plan) for conducting the EA studies and assessing predicted impacts of the project. The TOR will be submitted to the Minister of the Environment for approval consideration. Once approved, the TOR specifies how the EA studies will be conducted.

- For the proposed Beechwood Road Environmental Centre (BREC) facility, only the landfill that is intended to receive residual wastes, which cannot be recycled or reused, is subject to an EA under the Ontario *Environmental Assessment Act*.
- Other facility components of the BREC, such as materials recycling facility, construction and demolition materials facility, and organics processing facility, require government approvals such as Certificate of Approval.
- Components, such as Waste Electrical and Electronics Equipment (WEEE) and Public Drop-off Facility for recyclable materials, have already been implemented.
- The EA process for new or expanded landfills begins with a Notice of Commencement of the EA and development of a Terms of Reference (TOR).
- The proposed TOR will be drafted by WMCC in consultation with the Ministry of the Environment, surrounding communities and interested parties.
- The decision to approve or reject the TOR, or approve the TOR with conditions, is made by the Minister of the Environment.
- Public input and consultation is an important part of the development of the Terms of Reference.





# Consultation Program

Public Consultation during the development of the Terms of Reference (TOR) and throughout the EA process involves a variety of activities. The local community, neighbours, municipalities, First Nations communities, including the Mohawks of the Bay of Quinte, and interested parties are invited to become involved through participation at Open Houses, a workshop and meetings. Information will be available through an internet site, newsletters, phone, email, and informal meetings.

## TOR Open House #1

Will be taking place in Napanee on **March 10, 2010** from **2:00 - 9:00 pm** to present information on and discuss the Proposed TOR for the EA and an overview of the EA process.



## TOR Workshop

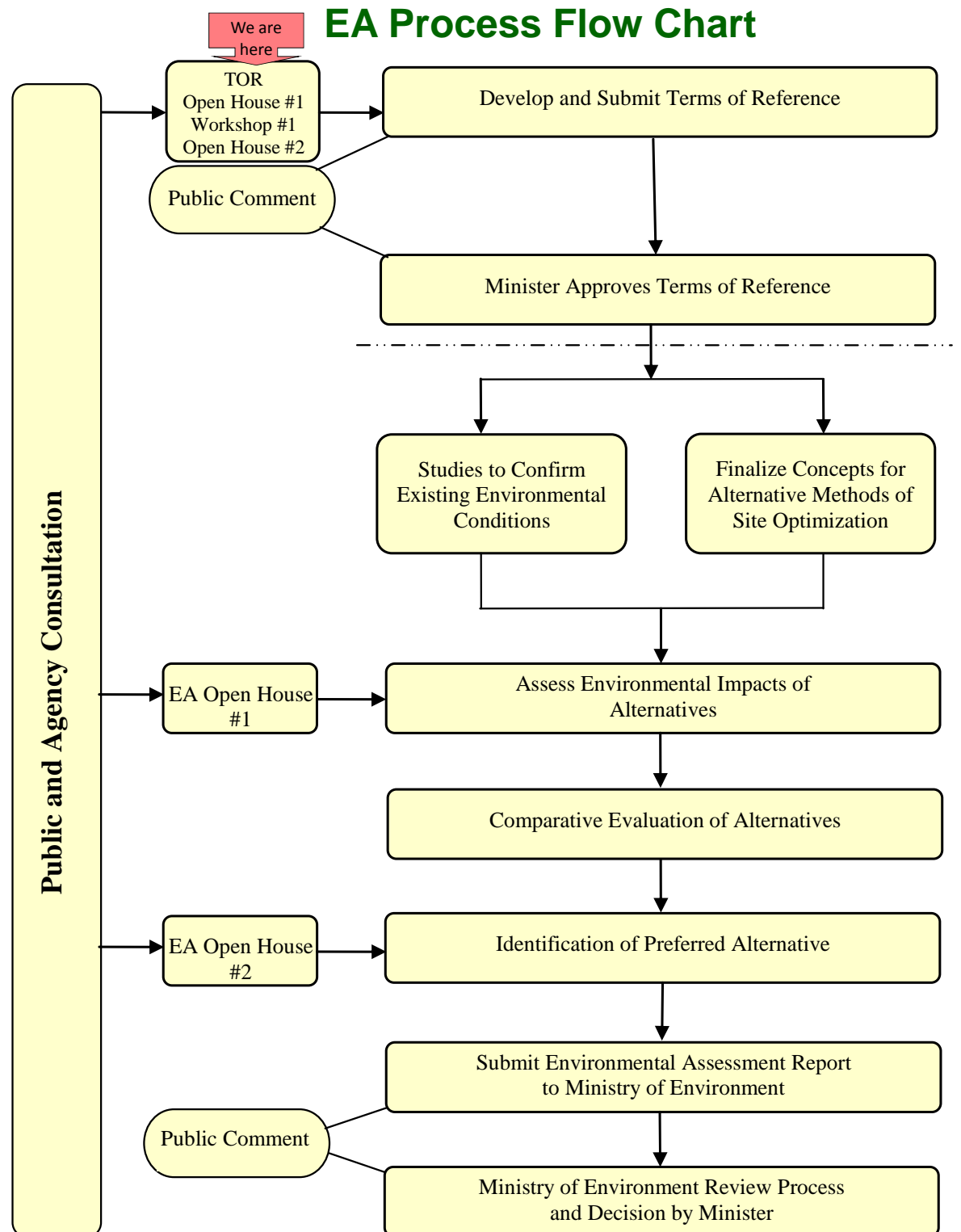
Will be held on March 25<sup>th</sup>, 2010 in Napanee to discuss site development alternatives and draft evaluation criteria.



## TOR Open House #2

Location and date (approx. Mid-May) to be determined. This event will present the results of consultation and the final draft TOR before submission to the Ministry of the Environment.

## EA Process Flow Chart



Consultation events are your opportunity to get involved in the EA process to let us know your opinion and ideas about the proposed development at the Napanee site.







## Opportunity Analysis

Prior to initiating the EA, we studied our business opportunities in the waste management market in eastern Ontario. We concluded that there is a continuing need for waste disposal services in this region including servicing the needs of our residential, industrial, commercial & institutional (IC&I) and construction & demolition (C&D) customers in eastern Ontario.

We considered a wide range of ways to meet the need for waste disposal services in eastern Ontario.

We considered the following possible alternatives:

1. Do nothing;
2. Close current landfill and continue to use site as a transfer and processing facility and haul wastes to a disposal facility elsewhere;
3. Construct a thermal destruction facility at the site;
4. Establish a new landfill elsewhere;
5. Close the current landfill and establish a new landfill on-site; and,
6. Close the current landfill and establish a new landfill for disposal of residual wastes on-site as part of a comprehensive waste management system that encompasses the proposed Beechwood Road Environmental Centre.

Of these, we determined that alternative #6 was the only reasonable option available, which was financially feasible, within our current properties and within the framework of our core business competencies.





# Alternative Methods

“Alternative methods” is a term used in EA and is the assessment of the different ways of implementing the proposed undertaking. For example, the proposed new landfill footprint for residual waste could be constructed in different locations and configurations (e.g., size, height, etc.) In the EA process, “alternative methods” are evaluated with respect to potential adverse effects on the environment and a preferred alternative is identified.

## Identifying Alternative Methods

We are proposing a range of new landfill footprint alternatives on land owned or optioned by Waste Management.

A **workshop** will be held on **Thursday, March 25, 2010** to obtain input from stakeholders on the proposed new landfill footprint alternatives, the draft alternative evaluation criteria and their relative importance.

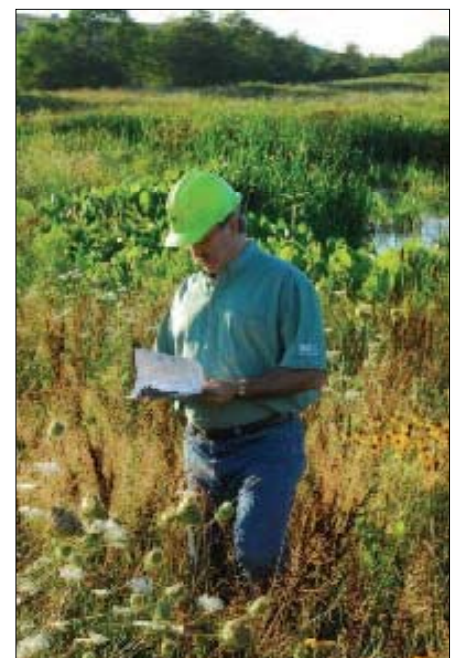
Please provide your contact information if you would like to attend this workshop.

## Comparing Alternative Methods

To compare and evaluate alternative methods, we have established draft Environmental Evaluation Criteria within the following categories: Environmental, Technical and Socio-Economic Criteria

Please help us to confirm the evaluation criteria and to establish the relative importance of criteria.

The criteria and importance will be used during the EA studies to help us compare and rank alternatives and to select a preferred landfill development alternative.







# Evaluation Criteria for Comparing Alternative Methods

Evaluation Criteria will be used as a basis for comparing alternative methods and help us identify a preferred alternative. Evaluation criteria may be broadly grouped into Environmental, Technical and Socio-economic categories. Each category contains criteria or components, such as “Atmospheric Environment,” which can be further broken down into sub-components such as “air quality”, “noise” and “odour”. These criteria form the basis for characterizing existing environmental conditions, for assessing potential adverse effects of the undertaking and comparing alternative methods.

## Environmental Criteria

<b>Atmospheric Environment</b>	Air quality, Noise, Odour
<b>Geology &amp; Hydrogeology</b>	Groundwater quality
<b>Surface Water Resources</b>	Surface water quality, Surface water quantity
<b>Terrestrial &amp; Aquatic Environment</b>	Terrestrial ecosystems, Aquatic ecosystems
<b>Archaeology and Cultural Heritage</b>	Cultural and heritage resources Archaeological resources
<b>Transportation</b>	Effects on airport operations Effects from truck transportation along access roads
<b>Land Use</b>	Effects on current and planned future land uses

## Technical Criteria

<b>Site Design and Operation</b>	Site design and operational characteristics
----------------------------------	---

## Socio-Economic Criteria

<b>Economic</b>	Effects on cost of service to customers/neighbours Continued service to customers Effects on/benefits to local community
<b>Social</b>	Visual impact of facility
<b>Aboriginal</b>	Potential effects on aboriginal communities
<b>Health and Safety</b>	Effects on Occupational health of the workers

Please complete your comment sheet and your assessment criteria form to help us understand the importance of the criteria presented and whether there are other criteria we should be considering as part of the EA.





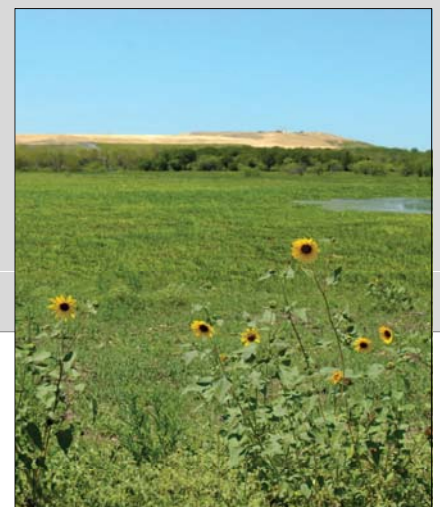
## Closure of Current Landfill

The existing landfill footprint will be closed and a final cover will be placed in accordance with the closure plan approved by the Ministry of the Environment (MOE).

In implementing the approved closure plan, we plan to:

- Continue on-going monitoring programs for:
  - groundwater,
  - surface water, and
  - landfill gas;
- Submit an annual report to the MOE for the closed landfill, including:
  - development,
  - operation, and
  - monitoring; and
- Provide financial assurance and supporting documentation to the MOE.

An Environmental Monitoring Program (EMP) will be submitted to the MOE for approval prior to the closure of the existing landfill footprint.







## Current Diversion Activities at Richmond Landfill

The Richmond landfill accepts household recyclables, electronic waste and organic waste. We are also a member of Freecycle™, a grassroots organization focused on re-use and of keeping useful materials out of landfills.

- **Recycling Depot:** We have facilities for customers to sort their blue box recyclables to be sent for processing
- **Composting:** Richmond landfill has an open window composting facility where leaf and yard waste is processed. The material is diverted from landfill, at the same time producing a valuable resource in the form of a natural soil amendment.
- **Construction and demolition materials:** We plan to construct a facility to collect and sort construction and demolition materials in order to divert usable materials from being sent to landfill and to separate recyclable material such as drywall and steel.
- **Electronic materials:** This site is now certified with OES (Ontario Electronic Stewardship) as an Approved Collection Site. As a result, we are able to accept items in Phase 1 of this program at no charge. These materials can be dropped off at our site by local residents for no charge and will be collected for processing at an OES site.
- **Tires:** We are now a registered collector with Ontario Tire Stewardship and are able to receive car and truck tires (off the rim) from residents for no charge.





## Next Steps

During the next 12 weeks, we will continue working on the preparation of draft Terms of Reference (TOR) for conducting the environmental assessment of the proposed undertaking. There are a lot of opportunities for you to get involved in the process and make your views known.

Get involved in the TOR development process and make your views known:

- Attend the workshop on March 25, 2010 to confirm alternative methods, evaluation criteria and to identify relative importance of criteria.
- Attend Open House #2 that will be held in mid-May to provide comments on draft Terms of Reference.
- Meet with us individually or in groups to ask questions, express your viewpoints or provide your input.
- Visit our website <http://brec.wm.com> to get more information or to provide your comments.







# Napanee Site



**Aerial photograph of the proposed undertaking and surrounding area**

