



Appendix C

Workshop – Consultation Report and Material





Introduction

This appendix describes the Workshop on alternatives to, alternative methods and evaluation criteria held on March 25, 2010 at The Smiling Wilderness Family Restaurant & Palace Village, 824 Palace Road in Napanee, Ontario.

Appendix C.1 contains the Workshop Consultation Report, which provides an overview of the event. Appendix C.2 contains Workshop notification materials including agency correspondence. Appendix C.3 contains the Workshop Materials including the workbook and handouts.





Appendix C.1 Workshop Consultation Report





Terms of Reference for a New Landfill Footprint
Workshop Summary Report

Workshop Consultation Report

March 25, 2010

New Landfill Footprint
Beechwood Road Environmental Centre

A workshop was held at the Smiling Wilderness Family Restaurant and Palace Village, 824 Palace Road, Napanee, Ontario from 6:00 p.m. to 9:30 p.m. The purpose of the workshop was to discuss:

1. The need for a new landfill footprint and alternatives to a new landfill footprint;
2. Alternative methods or ways of developing a new landfill footprint; and,
3. Proposed criteria that will be used in the EA to compare alternatives and identify a preferred alternative for the new landfill footprint.

The workshop was also intended to provide an opportunity for participants to provide general input and feedback on the EA process and opportunities for the public to become involved in the EA process.

The workshop was advertised on the comment sheets of Open House (OH) #1 (Appendix A) and attendees at the Open House were invited to sign up for the workshop. A notice of the workshop was posted on the project website (brec.wm.com) between March 12 and March 25. About 20 of the OH#1 attendees were contacted by telephone to notify of the workshop and to find-out about their interest.

Representatives from WM and consultants included:

- Tim Murphy – WM
- Linda Cooper – WM
- Randy Harris – WM
- Remi Godin - WM
- Michelle Armstrong –FoTenn Consultants Inc.
- Blair Shonilker – AECOM
- Ted O’Neill – Golder Associates Ltd.
- Bhagya Weerasinghe – Golder Associates Ltd.

Participants arrived at the Workshop between 6:00 p.m. and 6:15 p.m. Randy Harris began the workshop at 6:15 p.m. with an overview of the purpose, intended outcome and agenda for the evening. A total of 21 people (not including WM and consultants) participated in the workshop as listed below.

The participants were divided into three groups: A, B and C.

Group A consisted of the following people:

- Councillor City of Ottawa
- Mayor of Greater Napanee
- Resident of Greater Napanee
- Five Neighbours





Terms of Reference for a New Landfill Footprint Workshop Summary Report

Group B consisted of the following people:

- CLC member, Local Restaurant Owner
- Local Business Owner
- KFL&A Chief Medical Officer of Health
- Two Neighbours
- Councillor

Group C consisted of the following people:

- Local Business Owner and CLC member
- CLC member, Master student in landfill leachate treatment
- Local business owners
- Neighbour
- CLC for City of Ottawa

There were three teams of facilitators and resource people. The facilitation team members and discussion topics are listed below:

1. The need for a new landfill footprint and Alternatives to a new landfill footprint (facilitated by: Michelle Armstrong and Ted O'Neill resource person);
2. Alternative methods or ways of developing a new landfill footprint (facilitated by: Bhagya Weerasinghe and Linda Cooper resource person);
3. Proposed criteria that will be used in the EA to compare alternatives and identify a preferred alternative for the new landfill footprint (facilitated by: Blair Shonilker and Remi Godin resource person).

Each participant received a workbook (Appendix C.2) to complete during the evening, which was divided into three sessions of equal length. The facilitator teams met with each group in turn so that each person had the opportunity to participate in discussions, ask questions and provide input into each of the three discussion topics. During each session, the group members went through the workbooks assisted by a facilitator. The facilitators and/or resource persons went through general information regarding each of the project components and then answered questions. Then, general discussions took place where each group member had the opportunity to provide any comment or question. Finally, the group members were asked to document their input/opinion in the workbook.

There was a short break between table sessions, when they reconvened, they rotated to the next group.





At the end of the three sessions Randy Harris spoke to all the participants and thanked them for their participation and input. He noted that some folks had not completed all of their workbook comments and, if they wanted to, they were welcome to complete these at their own pace at home and to return them to WM next week. In addition, an electronic copy of the workbook was made available on the project website for anyone to read and use.

Topic #1: The need for a new landfill footprint and alternatives to a new landfill footprint
Group A

Part 1 – Need

- What will happen if there is no capacity to take garbage in Ontario?
- The Government of Ontario needs to take responsibility.
- Waste needs to go somewhere – shipping waste across the border is not a solution. What happens when the border closes to waste? Michigan will stop taking waste soon.
- What about incineration – is that an option?
- Was out of the Province shipments of waste considered in the analysis?
- (general agreement that there is a need for more waste capacity in Eastern Ontario)

Part 2 – Alternatives To

- Transferring wastes to other locations is just too expensive and not good for the environment. Transportation will only get more costly.
- Does the United States (U.S.) have the same environmental regulations (e.g., Dumping waste in the ocean from barges) – is it responsible to ship waste to U.S.?
- Everyone produces waste and no one wants to deal with it – someone needs to take responsibility.
- Saw a documentary on a landfill site in BC – we need tougher regulations passed so that we are forced to deal with our own waste.
- Why is dealing with your own waste such a tough sell? There are many benefits to the project. BREC would be a state-of-the-art facility; it should be an easier sell.
- The Province should step in and take responsibility and pass an Act that says how it should be done and it should be imposed on Ontario that we have to take care of our own garbage.
- This process is going to be better than the last process.
- (general agreement that the ‘alternatives to’ assessment was adequate – no other factors were identified that need to be considered)
- (general agreement that alternative 6 was preferred)





Group B

Part 1 – Need

- WM is asking for less landfill capacity than the last EA. If landfill needs in Eastern Ontario could potentially increase, why is WM decreasing the size of the landfill volume?
- There was opposition to the size of the landfill during the last EA.
- The BREC will increase diversion as well and therefore the landfill volume is less.
- At the time, in 2005, Toronto was shipping to the US and Napanee thought if the border closed then they would get Toronto waste.
- BREC can be a regional centre of excellence, a model for other waste centres.

Part 2 – Alternatives To

- Is it possible that if a “no” turned to a “yes”, or vice versa, in the screening summary identifying alternatives, that the preferred alternative could change during the process?
- No, the preferred alternative is identified and confirmed during the Terms of Reference process. The EA will be focused on the preferred alternative.
- Will this be a scoped EA?
- Yes, in EA terms, this is called a “Focused EA”. The need, or rationale for the project, and the preferred alternative will be defined.
- We agree with the 6 alternatives and that the preferred alternative is the best one and the one only one (agreed on by the three others at the table).

Group C

Part 1 – Need

- What does “aggressive diversion” mean? Is a 2% annual increase in diversion realistic and achievable? Where did that number come from?
- An increase of by 1.5 to 2% per year might be hard to achieve – progress may be slow.
- People should have to pay more for waste disposal services – there would be better diversion rates as a result.
- Did WM consider the closing of municipal landfill sites (eg. 2 in Stone Mills reaching capacity)?
- What about the garbage that goes south? What happens when the EPA decides to shutdown garbage transfers? We won't be prepared to deal with our own waste.
- What happens when the border closes?
- Michigan will stop taking wastes soon.
- Toronto now has the Green Lane facility which can take Toronto wastes.
- Why haven't more sites been created?





- Taking trash across the border costs money – very heavy burden on the taxpayer.
- It is better if waste goes to an organized centre such as BREC instead of it going to a larger number of small municipal sites since BREC will be much better equipped to sort, recycle and divert waste from a landfill. The smaller sites don't do much recycling and are not well-managed.

Part 2 – Alternatives To

- Need to educate the public about need for more diversion and produce less waste
- A lot of backyards have no compost, we need to think more about producing less waste. There needs to be a monetary incentive to encourage people to produce less – but I don't think this really WM's job.
- There need to more regulations that reduce the amount of packaging being produced and going to landfills.

Topic #2: Alternative Methods or ways of developing a new landfill footprint

Group A

This group felt that the areas identified as potential development areas are good, because it is not in view of Beechwood Road and Deseronto Road. Also, the group felt that WM has chosen the best land option based on availability, it is the most accessible, and looking at the available land areas, there are not very many options to be looked at other than what WM have proposed.

One neighbour, who has been living in the site vicinity for the past 37 years, felt that the environmental issues such as odour and aesthetics are overstated by the opposition and the issues are not as nearly as complex or bad as stated.

Group B

The participants of this group acknowledged a general understanding of the information presented and the analysis undertaken by WM to determine the most suitable land envelopes for the new landfill footprint.

There was a question about why not extend the existing landfill to the WM owned land area immediately east of the existing landfill until WM gets approval for the larger landfill footprint? It was explained that the EA approvals are required for the expansion similar to the approvals required for the development of the new LF footprint and that it would only make sense to get approvals for what is needed (13 M m³) one time. It was proposed that WM should get approval to develop both envelopes of land on east and west part of the project area, which will allow them to develop a new landfill footprint on the easterly part of the property. Once the capacity of the easterly landfill is filled, westerly part could be developed.

Then they questioned why WM decided to restrict the height of the new LF to the existing landfill height. When they were explained that the existing height was used as a starting point and is restricted by the





height of the hydro easement and that it is open to public discussion, they mentioned that they feel that they are not opposed to the LF being higher than the existing LF, if WM were to convert the LF surface into recreational areas and make it “look pretty.” They were also informed that the existing height was used as a starting point and the exact dimensions of the LF and the locations of other diversion facilities (MRF, C&D, greenhouses etc) will be determined through the EA process.

The group felt that encouraging public use on the site could help promote the project because that would help people realize that the Site is being operated in an environmentally healthy manner and it is much more safer than what the opposition is making it out to be.

The group felt that they do not like symmetrical objects and it is preferred that the area could be developed to blend with the surrounding area, and encourage public uses.

All of the group members preferred the westerly option over the easterly option because they felt that the option that is closest to the Deseronto Road was better from a transportation perspective. Also, they felt that using the westerly option is preferred from a visual impact perspective as the landfill will be sheltered by the wetland conservation area to the north, existing closed LF site to the south and other wooded areas/open land to the west.

Group C

This group had the following questions:

- Who is ultimately going to decide where to put the landfill footprint on the proposed land envelopes?
- Does the 50 – 55 ha landfill footprint include required buffer zones?
- What would the impact be on the cost of the liner based on the orientation of the LF?
- What determines the ultimate height of the LF and what is the rationale for choosing the particular height chosen?
 - o For this analysis, if volume and the height is constrained, the only thing that would change is slope and the area?
 - o What would the impact be if the height is shorter?
- The 200 m buffer zones around Marysville Creek required by the MOE or decided by WM?
- Does the landfill have to be a rectangular/square shape or could it be an irregular shape like Kidney shape? They felt that the LF being irregular shape would be beneficial in this case because it will allow better utilization of the land here considering there are distinct land areas east and west part of the Site.





Topic #3 Evaluation Criteria

Group A

There was a lengthy discussion on the aboriginal component where we need to engage the MBQ as they are the only political opponent left.

Members of the group also discussed the fact that opposition has provided many incorrect statements in the past about the environmental impacts that have not been challenged by WM and that the community will then believe the opposition statements. WM is a big corporation with many sites and experts and should be able to operate the sites in a proper and safe manner and that the Community should be lucky to have WM around to operate a state-of-the-art facility.

There was a discussion on site geology and it was noted that it has to be put into perspective as other new sites have been located in quarries (e.g., Walker Bros).

Group B

There was a long discussion about economic benefits to local municipality from Napanee councillor and a local business person. Discussed the fact that the Napanee STP could be upgraded to treat the leachate and also help the municipal infrastructures from revenues/cost savings that the BREC would provide.

Group C

This group spent most of the time completing the evaluation criteria part of the workbook on their own. There was a question about how much land WM owned and where it was located. There were also concerns about the wetland to the NW and how WM would protect it from surface water impact.

Comments on workshop / general comments

- Some of the information was too technical.
- The naysayers would read into the information and conclude that you had already made your decision, but you are not going to change their minds.
- Lafarge issue – the courts overturned MOE's decision.
- My opinion is that most of the town's people don't care – the negative voice gets heard.
- Need to emphasize the benefit to this community economically – more jobs, lower taxes.

Questions Attendees were asked from the Workshop Workbook:

Need and Rationale for Waste Disposal Service in Eastern Ontario:





Terms of Reference for a New Landfill Footprint Workshop Summary Report

1. Do you understand the analysis that WM undertook to determine if there is a need for waste disposal services in eastern Ontario?
2. Are there are other assessment factors that should be included in the analysis? What are they?
3. Do you generally agree that there is a need for waste disposal services in eastern Ontario even with aggressive increases in waste diversion efforts? If no, please share your reasoning.

Alternatives To a New Landfill Footprint:

1. Do you understand the analysis that WM undertook to determine alternatives to meeting the need for waste disposal services in eastern Ontario?
2. Are there other “alternatives to” that should be considered? What are they?
3. Are there other evaluation criteria that should be considered in the assessment? What are they?
4. Do you agree with the screening of alternatives to determine if they are reasonable and practical?
5. Do you agree with the conclusion that alternative 6 is the preferred alternative?

Alternative Methods (Ways) for a New Landfill Footprint

1. Do you understand the analysis that WM undertook to determine general areas (envelopes) for developing new landfill footprint alternatives and other components of the BREC?
2. Are you in agreement with the constraint areas? If no, how would you change them?
3. Are you in agreement with the potential development areas (envelopes)? If no, how would you change them?
4. How many alternative methods should be considered in the EA? Why?

Evaluation Criteria for Detailed Comparative Evaluation of Footprint Alternatives

1. Do you agree with the environmental components that have been identified? If no, what changes would you suggest?
2. Do you agree with the environmental sub-components that have been identified? If no, what changes would you suggest?
3. Do you agree with the rationale provided for the environmental components and sub-components? If no, what changes would you suggest?
4. Do you agree with the indicators provided? If no, what changes or additions would you make? (Make changes on the table).
5. Please rate the criteria according to the importance you place each. This information will be used in the aggregation of preferences for the alternatives. (Please make changes on the table and provide the rationale for the importance that you selected).

Workbook Input

Table 1 summarizes the comments/answers received for the above questions on workbooks from the attendees at workshop.





Terms of Reference for a New Landfill Footprint
Workshop Summary Report

Table 1: Input received from workshop attendees

		Workbook Number**													
		1	2	3	4	5	6	7	8	9	10	11	12	13	14
Overall												It seemed a bit more of a presentation with comments than a true workshop			
Need															
1.	Yes - has to go somewhere - Michigan will close soon	Yes	Yes	Yes, we make garbage, where is it to go? With more families, there is greater need.	Yes	Yes	N/A	N/A	I understand that human beings produce garbage it has to go somewhere	N/A	N/A	Yes	Yes	Yes	yes. We love a landfill for our waste, we need to keep it open for eastern Ontario
2.	Incineration?	-		Amount of waste going somewhere else.	Are there plans to either expand the current facilities or create new facilities in the event that we are no longer able to ship our waste across the border?	Yes	N/A	N/A	Richmond landfill is about full.	N/A	N/A	Are there other proposed sites?	Public education on composting	N/A	
3.	-	Yes - a large need		We are in agreement that there is a need.	Yes	We need an environmentally safe way of dealing with our waste - without it we are a constipated community. Just as with constipation brings on a host of health problems just so with a community's health.	N/A	N/A	Yes	N/A	N/A	Would a limit on total capacity force increased diversion? (even beyond the 2%)	More diversion cuts down on landfill	Yes - human populations need landfills - we need to divert as much as possible necessary all rhrvirical with waste. Need next technology to sort waste like metals, plastics, wood fibre.	yes

* This column corresponds to questions in the Workbook listed on page WS-12 and WS-13
** Columns 1 - 14 correspond to input received from workshop participants.





Table 1: Input received from workshop attendees (continued)

	Workbook Number**													
*	1	2	3	4	5	6	7	8	9	10	11	12	13	14
Alternatives To														
1.	Yes	Yes	Yes, it was straightforward	Yes	Yes	N/A	N/A	Even in considering with our limited expertise any possible options available. We would have to come to the conclusion WM did that option 6 is ideal.	N/A	N/A	Yes	yes	Yes	yes
2.	--	No	No, not as far as I am concerned, I found list and analysis just fine.	None that I can think of	I think you've covered it (at least those that are politically possible with this Ontario Govt.) However, ideally we should be looking at some European or Japanese examples of simply harvesting energy thru ecologically sound incineration. (ie. Burning tires in cement kilns – pure energy being harvested. Incineration to produce electricity.	no	N/A	N/A	N/A	N/A	Landfill vs. bioreactor landfill	Three R's	?	
3.		No	None, everything was looked at.	None that I can think of		N/A	N/A	N/A	N/A	N/A	Environmental tasks	N/A	Yes	

* This column corresponds to questions in the Workbook listed on page WS-12 and WS-13
** Columns 1 - 14 correspond to input received from workshop participants.





Table 1: Input received from workshop attendees (continued)

	Workbook Number**													
*	1	2	3	4	5	6	7	8	9	10	11	12	13	14
Alternatives To														
4.	General agreement	Yes	Yes, very reasonable & practical	Yes		N/A	N/A	N/A	N/A	N/A	Question the technical feasibility of thermal	N/A	N/A	
5.	Yes	Yes	Yes, very much in agreement.	-	absolutely	Yes, this is the best	Based on current knowledge and the facts as known I understood I believe that should I have the opportunity make this decision, I would come to the same conclusion of alternative #6.	N/A	N/A		From the company's perspective, yes	Yes	N/A	yes
Alternative Methods														
1.	Yes	Yes	Yes	-	Yes	Yes, looks good	I understand the analysis process and how they arrived at the site areas chosen	I believe that I do... wet lands hydro easement in contiguous	Yes. I understand the approach but it would have helped if I had attended the open house too.	Yes	Not really, no mention of cost associated with looks like they said A&B based on theoretical constraints what the height constraints?	yes	? not enough knowledge on the subject	yes

* This column corresponds to questions in the Workbook listed on page WS-12 and WS-13

** Columns 1 - 14 correspond to input received from workshop participants.





Table 1: Input received from workshop attendees (continued)

	Workbook Number**													
*	1	2	3	4	5	6	7	8	9	10	11	12	13	14
2.	Yes	Yes	Yes	-	Yes	Yes	I am in agreement environmental and physical aspects have been considered	I wonder if red area to south of hydro lines could/should be used as a beginning point before lands are used beyond (north of) the hydro lands. I am convinced that this is not an option.	I am in agreement that certain areas need to be excluded	yes	Personally, I'd like to see increased buffer zone around the SW system i.e. higher GW conductivities in fractured limestone. Is 200 m setback the MOE minimum or is it refined from the unique site characteristics?	Yes	Easement accessibility – sito Existing area are logical – need to study the area to consider on addition areas for consideration	yes
3.	Yes	Yes	Yes, it is good it is not visible on Beechwood Rd & Desoronto Rd; less visibility of sea gulls & possibly less smell due to methane gas.	-	Yes (see the outline of the map – could be moved closer to power corridor, access road from Desoronto which is the shortest drive from 401 corridor. Buffer zone on all sides (wetland, private area, hydro corridor, Desoronto Rd.)	Yes	Yes – areas appear to respect the area available, and from a business perspective it makes sense to develop for the long term viability	Yes	N/A	Yes	Indifferent	Yes	Easement accessibility – was not involved in assessment	yes

* This column corresponds to questions in the Workbook listed on page WS-12 and WS-13
** Columns 1 - 14 correspond to input received from workshop participants.





Table 1: Input received from workshop attendees (continued)

		Workbook Number**														
		1	2	3	4	5	6	7	8	9	10	11	12	13	14	
4.	Alternative Methods	Transport off 401 – Desoronto Rd, rather than up Beechwood past residences.	None	None, there are no other alternatives.	-	Two, just to have options	All potentially viable methods should be considered – our future – more than 25 years – should be anticipated.	Why looking at only 50 to 55 ha when long-term term i.e., 50 years instead of 25 look at the whole owned lands for 1 big CofA! Prevent the anxiety of a future generation of having to go through the stress of doing this process again!.. I feel that the new site should be higher and differently contoured to provide more scenic view and diversity of future use as parks.	N/A	N/A	N/A	More the better...	Three R's	?	?	
	Criteria	Yes	-	-	Yes, I think the important components have been covered	Yes	N/A	N/A	N/A	N/A	N/A	N/A	yes	N/A	N/A	
2.		-	-	-	Yes	N/A	N/A	N/A	N/A	N/A	N/A	Reoccurrence of put issues expansion of GW repeat?	yes	N/A	N/A	

* This column corresponds to questions in the Workbook listed on page WS-12 and WS-13

** Columns 1 - 14 correspond to input received from workshop participants.





Table 1: Input received from workshop attendees (continued)

Criteria	Workbook Number**													
	1	2	3	4	5	6	7	8	9	10	11	12	13	14
3.	Yes	-	-	Yes		N/A	N/A	N/A	N/A	N/A	Emphasis on prior site issues is needed	yes	N/A	
4.	Yes	-	-	Yes		N/A	N/A	N/A	N/A	N/A		yes	N/A	
5.	Air quality - imp. - less imp. Odour - imp. Groundwater - imp.					N/A	N/A	N/A	N/A	N/A	N/A	Public education	N/A	

* This column corresponds to questions in the Workbook listed on page WS-12 and WS-13

** Columns 1 - 14 correspond to input received from workshop participants.





Proposed criteria that will be used in the EA to compare alternatives and identify a preferred alternative for the new landfill footprint were discussed.

Following table provides a summary of Workshop participants' rating of proposed assessment criteria.

Table 2: Workshop Participant Rating of Assessment Criteria			
Criteria	Very Important	Important	Less Important
Groundwater quality	✓		
Site design and operations	✓		
Surface water quality	✓		
Surface water quantity	✓		
Air quality	✓		
Odour	✓		
Terrestrial ecosystems	✓		
Effects from truck traffic along a access roads	✓		
Continued service to customers	✓		
Aquatic ecosystems	✓		
Economic benefits to local municipality	✓		
Effects on the cost of services to customers	✓		
Effects on current and planned future land uses		✓	
Recreational facilities		✓	
Archaeological resources		✓	
Visual impact of the facility		✓	
Effects on airport operations		✓	
Noise			✓
Displacement of agriculture land			✓
Aboriginal Community Interests	To be determined with aboriginal communities		





Appendix C.2 Workshop Notification Materials





Appendix C.2.1 Agency Correspondence

- Follow-Up Letter Inviting the Members of the GRT to the Workshop
- Follow-Up Letter Inviting the Members of the GRT (FN Related) to the Workshop
- Follow-Up Letter Inviting the Members of First Nation Communities to the Workshop
- Contact List for March 22 Letter
- Correspondence (letters/emails received)



Follow-Up Letter Inviting Members of the GRT to the Workshop
(see Table WS-1 for list of GRT Members that follow-up letters were sent to)



WASTE MANAGEMENT
OF CANADA CORPORATION
R.R. #6
1271 Beechwood Road
Napanee, ON K7R 3L1

(613) 388-1057
(613) 388-2785 Fax

March 22, 2010

Name of the GRT Member
Position
Name of the Government Agency & Department
Address
City, Province, Postal Code

Dear Mr./Ms. _____:

RE: Waste Management of Canada Corporation, Beechwood Road Environmental Centre (BREC), Environmental Assessment New Landfill Footprint

On March 5th, 2010, I wrote to you on behalf of Waste Management of Canada Corporation (WMCC) announcing that WMCC is seeking approval under Ontario's Environmental Assessment Act to develop and operate the new landfill footprint and has commenced development of a Terms of Reference, which is an initial step in the Environmental Assessment process. A copy of the Notice of Commencement for the development of the Terms of Reference was attached with our previous correspondence dated March 5th, 2010.


Our First Open House took place Wednesday March 10, 2010 at The Smiling Wilderness Family Restaurant & Palace Village, 824 Palace Road, Napanee, Ontario between 2:00 p.m. and 9:00 p.m. We regret that you were unable to attend our First Open House; however, as we indicated in our previous letter, there will be multiple future opportunities for you to participate and provide your input towards the development of our project.

Our next public consultation event is a Workshop on alternatives and evaluation criteria, which will take place Thursday March 25, 2010 at The Smiling Wilderness Family Restaurant & Palace Village, 824 Palace Road, Suite 1, Napanee, Ontario between 6:00 p.m. and 9:30 p.m. (light dinner will be provided). We hope that you will be able to participate in this Workshop. Please contact me if you are planning to attend. In the coming weeks, we will be hosting other consultation events and advancing the development of the proposal.

We will keep you up to date on new developments. In the near future, we will forward you proposed work plans for EA studies for your review. In addition, a member of our team will contact you by telephone to document any input you may have on this EA.

In the meantime, please do not hesitate to ask any questions you might have. For further information, please visit our website at <http://brec.wm.com> or contact us at the address on this letter, phone or email tmurphy3@wm.com.

Yours truly,

A handwritten signature in black ink, appearing to read 'TM', is positioned above the typed name.

Tim Murphy, MCIP, RPP
Waste Management of Canada Corporation

cc: Ted O'Neill, Golder Associates Ltd.

**Follow-Up Letter Inviting Members of the GRT (FN Related) to the Workshop
(see Table WS-1 for list of FN Related-GRT Members that follow-up letters were sent to)**



WASTE MANAGEMENT
OF CANADA CORPORATION
R.R. #6
1271 Beechwood Road
Napanea, ON K7R 3L1
(613) 388-1057
(613) 388-2785 Fax

March 22, 2010

Name of the GRT member
Position
Name of the Government Branch
Address
City, Province, Postal Code

Dear Mr./Ms. _____:

**RE: Waste Management of Canada Corporation, Beechwood Road Environmental Centre (BREC),
Environmental Assessment New Landfill Footprint**

On March 5th, 2010, I wrote to you on behalf of Waste Management of Canada Corporation (WMCC) announcing that WMCC is seeking approval under Ontario's Environmental Assessment Act to develop and operate the new landfill footprint and has commenced development of a Terms of Reference, which is an initial step in the Environmental Assessment process. A copy of the Notice of Commencement for the development of the Terms of Reference was attached with our previous correspondence dated March 5th, 2010.

Our First Open House took place Wednesday March 10, 2010 at The Smiling Wilderness Family Restaurant & Palace Village, 824 Palace Road, Napanea, Ontario between 2:00 p.m. and 9:00 p.m. We regret that you were unable to attend our First Open House; however, as we indicated in our previous letter, there will be multiple future opportunities for you to participate and provide your input towards the development of our project.

Our next public consultation event is a Workshop on alternatives and evaluation criteria, which will take place Thursday March 25, 2010 at The Smiling Wilderness Family Restaurant & Palace Village, 824 Palace Road, Suite 1, Napanea, Ontario between 6:00 p.m. and 9:30 p.m. (light dinner will be provided). We hope that you will be able to participate in this Workshop. Please contact me if you are planning to attend. In the coming weeks, we will be hosting other consultation events and advancing the development of the proposal.

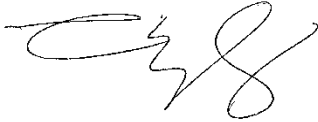
We will keep you up to date on new developments.

We have attached the list of aboriginal communities and groups that were notified as a part of the project's consultation process for your review. If you feel that any additional aboriginal communities or groups should be notified of this EA, please let us know.

In addition, a member of our team will contact you by telephone to document any input you may have on this EA.

In the meantime, please do not hesitate to ask any questions you might have. For further information, please visit our website at <http://brec.wm.com> or contact us at the address on this letter, phone or email tmurphy3@wm.com.

Yours truly,

A handwritten signature in black ink, appearing to read 'TM', with a stylized flourish extending from the end.

Tim Murphy, MCIP, RPP
Waste Management of Canada Corporation

cc: Ted O'Neill, Golder Associates Ltd.

Attachment: List of First Nation Groups Contacted

List of First Nation Groups Contacted

First Nation	Chief
Alderville First Nation P. O. Box 46, R.R. #4 ROSENEATH, Ontario KOK 2X0	Chief James R. Marsden Ph: (905) 352-2011 Fax: (905) 352-3242 jbmarsden@eagle.ca
Algonquins of Pikwakanagan First Nation P.O. Box 100 Pikwakanagan, GOLDEN LAKE, Ontario K0J 1X0	Chief Kirby Whiteduck Ph: (613) 625-2800 Fax: (613) 625-1149 chiefcouncil@pikwakanagan.ca
Chippewas of Mnjikaning (Rama) 5884 Rama Rd. Suite 200 RAMA, ON LOK 1T0	Chief Sharon Stinson Henry Ph: (705) 325-3611 Fax: (705) 325-0879 chief@mnjikaning.ca
Curve Lake First Nation 22 Winookeeda Road CURVE LAKE, ON KOL 1R0	Chief Keith Knott Ph: (705) 657-8045 Fax: (705) 657-8708 tiffany@curvelakefn.ca
Hiawatha First Nation 123 Paudash Street R. R. #2 KEENE, ON KOL 2G0	Chief Laurie Carr Ph: (705) 295-4421 Fax: (705) 295-4424 lcarr@hiawathafn.ca
Mississaugas of Scugog Island 22521 Island Road PORT PERRY, ON L9L 1B6	Chief Tracy Gauthier Ph: (905) 985-1940 Fax: (905) 985-8828 tgauthier@scugogfirstnation.com
Mohawks of the Bay of Quinte 13 Old York Road R. R. #1, DESERONTO, ON KOK 1X0	Chief R. Donald Maracle Ph: (613) 396-3424 ext. 121 Fax: (613) 396-3627 rdonm@mbq-tmt.org
Wendat-Huron First Nations 255 Place Chef Michel Laveau Wendake (Québec) G0A 4V0 CANADA	Chief Konrad Sioui administration@cnhw.qc.ca

**Follow-Up Letter Inviting Members of First Nation Communities to the Workshop
(see Table WS-1 for list of First Nation communities that follow-up letters were sent to)**



**WASTE MANAGEMENT
OF CANADA CORPORATION**

R.R. #6
1271 Beechwood Road
Napanee, ON K7R 3L1
(613) 388-1057
(613) 388-2785 Fax

March 22, 2010

Name of the FN Chief/Contact Person
Name of the First Nation Group
Address
City, Province, Postal Code

Dear Chief/Mr. _____:

RE: Waste Management of Canada Corporation, Beechwood Road Environmental Centre (BREC), Environmental Assessment New Landfill Footprint

On March 5th, 2010, I wrote to you on behalf of Waste Management of Canada Corporation (WMCC) announcing that WMCC is seeking approval under Ontario's Environmental Assessment Act to develop and operate the new landfill footprint and has commenced development of a Terms of Reference, which is an initial step in the Environmental Assessment process. A copy of the Notice of Commencement for the development of the Terms of Reference was attached with our previous correspondence dated March 5th, 2010.

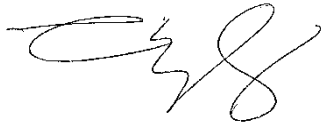
Our First Open House took place Wednesday March 10, 2010 at The Smiling Wilderness Family Restaurant & Palace Village, 824 Palace Road, Napanee, Ontario between 2:00 p.m. and 9:00 p.m. We regret that you were unable to attend our First Open House; however, as we indicated in our previous letter, there will be multiple future opportunities for you to participate and provide your input towards the development of our project.

Our next public consultation event is a Workshop on alternatives and evaluation criteria, which will take place Thursday March 25, 2010 at The Smiling Wilderness Family Restaurant & Palace Village, 824 Palace Road, Suite 1, Napanee, Ontario between 6:00 p.m. and 9:30 p.m. (light dinner will be provided). We hope that you will be able to participate in this Workshop. Please contact me if you are planning to attend. In the coming weeks, we will be hosting other consultation events and advancing the development of the proposal.

Consultation with First Nations communities is an important element of the Environmental Assessment process. Should you or your council wish to become involved in the EA process or discuss the project, we would be pleased to work with you at another venue to develop and carry out separate events specifically designed to engage your community in meaningful discussions concerning the project. Contact me if you would like to develop a separate consultation event(s).

Please let us know if you are interested in engaging in discussions and providing input to our project. We will keep you up to date on new developments. Please do not hesitate to ask any questions. For further information, please visit our website at <http://brec.wm.com> or contact us at the address on this letter, phone or email tmurphy3@wm.com.

Yours truly,

A handwritten signature in black ink, appearing to read 'TM', with a stylized flourish extending from the end.

Tim Murphy, MCIP, RPP
Waste Management of Canada Corporation

cc: Ted O'Neill, Golder Associates Ltd.

Table WS-1: Contact List for March 22 Letter – Follow-up and Workshop Invitation Letter

	Name, Position, Agency and Address	Document Form	Phone, fax, and e-mail	Types of EA Projects to be Circulated	March 5 letter response
PROVINCIAL AGENCIES & MINISTRIES					
Ontario Power Generation					
1.	Mr. Steve Hounsell, Senior Advisor, Sustainable Development Ontario Power Generation 700 University Ave. Toronto ON M5G 1X6	1 hard copy	T: (416) 592-2766 F: (416) 592-7097 steve.hounsell@opg.com	Projects within 2 km of an OPG generating site or that could potentially directly impact any Ontario Power Generation generating site. If unsure, contact OPG before sending documents.	
2.	Quinte Conservation 2061 Old Highway 2, R. R. #2, Belleville ON Canada K8N 4Z2		T613-968-3434 F613-968-8240		
Ministry of Agriculture Food and Rural Affairs					
3.	Mr. David Cooper, Manager Environmental & Land Use Policy Ministry of Agriculture, Food and Rural Affairs 1 Stone Road W, 3 rd Floor Guelph ON N1G 4Y2	1 hard copy of Parent Class EAs or province-wide documents.	T: (519) 826-3117 F: (519) 826-3109 david.cooper@ontario.ca	All Parent Class EAs and exemptions or activities of a province-wide application affecting agricultural operations, specialty crop soils or Class 1-3 Agricultural land. Individual EAs and Class EAs affecting agricultural operations, specialty crop soils and Classes 1-3 Agricultural lands, except in urban designations, and all waste EAs	

Table WS-1: Contact List for March 22 Letter – Follow-up and Workshop Invitation Letter

	Name, Position, Agency and Address	Document Form	Phone, fax, and e-mail	Types of EA Projects to be Circulated	March 5 letter response
4.	Mr. Ray Valaitis, Rural Planner Central and North Region Ontario Ministry of Agriculture, Food and Rural Affairs RR #3, 95 Dundas Street, Brighton ON 0K 1H0	1 hard copy	Phone: 613-475-4764 Fax: 613-475-3835 ray.valaitis@ontario.ca	Projects meeting above criteria in North Region, which covers upper-tier municipalities of Muskoka and Nipissing northward. Central Region covers municipalities of Toronto, York, and Simcoe east to Hastings and Lennox & Addington including Peterborough area.	
Ministry of Energy and Infrastructure					
5.	Alan Jenkins Sr. Policy Specialist Energy Supply and Competition Branch Ministry of Energy and Infrastructure 880 Bay Street 3 rd floor Toronto, ON, M7A 2C1	1 hard copy	T: 416-325-6926 F: 416-325-6972 Allan.jenkins@ontario.ca	Parent class EAs Individual and Class EA with energy implications or energy-related (including landfill gas)	
6.	Kevin Pal Manager Strategic Policy Branch Ministry of Energy and Infrastructure 880 Bay Street 6 th floor Toronto, ON, M7A 2C1	1 hard copy	T: 416-327-7204 F: 416-327-7204 Kevin.pal@ontario.ca	All parent, individual and class EAs	

Table WS-1: Contact List for March 22 Letter – Follow-up and Workshop Invitation Letter

	Name, Position, Agency and Address	Document Form	Phone, fax, and e-mail	Types of EA Projects to be Circulated	March 5 letter response
7.	<p>Ms. Tija Dirks, Director Growth Policy, Planning and Analysis Ontario Growth Secretariat Ministry of Energy and Infrastructure 777 Bay Street 4th floor Toronto, ON, M5G 2E5</p>	1 hard copy	416-325-1546 F 416-325-7403 Tija.dirks@ontario.ca	Contact to see if they have an interest in the EA	
8.	<p>Ministry of Culture Ms. Karla Barboza, Heritage Adviser Culture Services Unit Programs and Services Branch Ministry of Culture 400 University Avenue, 4th Floor Toronto ON M7A 2R9</p>	1 hard copy	T: (416) 314-7120 F: (416) 314-7790 karla.barboza@mci.gov.on.ca	Send all province-wide or general EA initiatives (i.e. Parent Class EAs) for comment and coordination on general heritage impact.	Out of Office
9.	<p>Mr. Chris Andersen, Heritage Planner Cultural Services Unit, Programs and Services Branch Ministry of Culture, 400 University Ave. 4th Floor Toronto ON M7A 2R9</p>	1 hard copy	T: (416) 314-7159 F: (416) 212-1802 Chris.andersen@ontario.ca	All individual and Class EAs in Eastern and Northeastern Ontario – Eastern Ontario covers upper- and single-tier municipalities from Quinte West, Hastings and Renfrew eastward to Quebec; incl. Ottawa and Kingston areas. Northeastern Ontario covers Parry Sound, Sudbury, Nipissing, Timiskaming, Cochrane, Algoma and Manitoulin.	

Table WS-1: Contact List for March 22 Letter – Follow-up and Workshop Invitation Letter

	Name, Position, Agency and Address	Document Form	Phone, fax, and e-mail	Types of EA Projects to be Circulated	March 5 letter response
10.	Ms. Mary Beach, Manager East Region Ministries of Citizenship and Immigration, Culture, Tourism and Health Promotion 347 Preston Street, 4 th Floor Ottawa ON K1S 6B7	1 hard copy	T: (613) 742-3366 F: (613) 742-5300 mary.beach@ontario.ca	All individual and Class EAs in East Region which covers upper- and single-tier municipalities of Northumberland, Kawartha Lakes, and Haliburton eastward including Ottawa, Kingston and Peterborough areas.	
Ministry of Tourism					
11.	Mr. Darryl Soshycki, Manager Strategic & Corporate Policy Unit Tourism Policy and Research Branch Ministry of Tourism 15th Floor, 700 Bay Street Toronto ON M7A 2E1	1 hard copy	T: (416) 212-1676 F: (416) 314-7341 Darryl.soshycki@ontario.ca	All Parent Class EAs and individual and Class EAs of province-wide or high-level of significance (e.g. inter-provincial bridges).	
12.	Mr. Gerry Webber, Coordinator Resource-based Tourism Unit Tourism Policy and Research Branch Ministry of Tourism Suite 401, 199 Larch Street Sudbury ON P3E 6A5	Prefers Electronic	T: 705-564-3175 F: 705-677-4019 Gerry.webber@ontario.ca	All Parent Class EAs and Class EAs and individual EAs of province-wide or high-level of significance (e.g. inter-provincial bridges).	
Ministry of Health Promotion					
13.	Mr. Craig Stewart, Manager Recreation Unit Sports and Recreation Branch Ministry of Health Promotion 18 th Floor, 393 University Avenue Toronto ON M7A 2S1	1 hard copy	Craig.stewart@ontario.ca	All Parent Class EAs if they may have implications for recreational use of land.	

Table WS-1: Contact List for March 22 Letter – Follow-up and Workshop Invitation Letter

	Name, Position, Agency and Address	Document Form	Phone, fax, and e-mail	Types of EA Projects to be Circulated	March 5 letter response
	Ministry of Education				
14.	Mr. Steven Mitchell, O.A.A., Architect Pupil Accommodation Unit Business Services Branch Ministry of Education 21st Floor, Mowat Block, 900 Bay Street Toronto ON M7A 1L2	1 hard copy	T: (416) 325-2015 F: (416) 325-4024 Steven.mitchell@ontario.ca	All Parent Class EAs or province-wide EA matters..	
15.	<u>Limestone District School Board</u> Helen Chadwick Chair 220 Portsmouth Ave Kingston, ON K7L 4X4		613-544-6920 ing@limestone.on.ca		
16.	Hastings / Prince Edward County District School Board Mike Brant P.O. Box 66, 70 Shannonville Road Tyendinaga Mohawk Territory, ON K0K 3A0 Electoral area: Tyendinaga / Mohawk Territory		Phone: +1 613 962-3595 Email: mbrant@hpedsb.on.ca		
17.	Hastings/Prince Edward District School Board 156 Ann St. Belleville, ON K8N 1N9				
	Ministry of Health and Long-Term Care				
18.	Dr. Ian Gemmill Medical Officer of Health Kingston, Frontenac and Lennox & Addington Health Unit		221 Portsmouth Avenue, Kingston, ON K7M 1V5		

Table WS-1: Contact List for March 22 Letter – Follow-up and Workshop Invitation Letter

	Name, Position, Agency and Address	Document Form	Phone, fax, and e-mail	Types of EA Projects to be Circulated	March 5 letter response
19.	Medical Officer of Health: Dr. Richard Schabas Hastings & Prince Edward Counties Health Unit 179 North Park Street Belleville, ON K8P 4P1 Web: http://www.hpechu.on.ca/		Tel: (613) 966-5500 Fax: (613) 966-9418		
20.	Board of Health Chair: Ron Hamilton Hastings & Prince Edward Counties Health Unit 179 North Park Street Belleville, ON K8P 4P1		Tel: (613) 966-5500 Fax: (613) 966-9418		
21.	Kingston KFL&A Public Health 221 Portsmouth Avenue Kingston, ON K7M 1V5	1 hard copy	Telephone: 613-549-1232 Toll Free: 1-800-267-7875 Fax: 613-549-7896		
22.	Napanee KFL&A Public Health 41 Dundas Street Napanee, ON K7R 1Z5	1 hard copy	Telephone: 613-354-3357 Fax: 613-354-6267		
23.	Dr. Ian Gammill Medical Officer of Health KFL&A Health Unit 221 Portsmouth Ave Kingston, Ontario K7M 1V5				

Table WS-1: Contact List for March 22 Letter – Follow-up and Workshop Invitation Letter

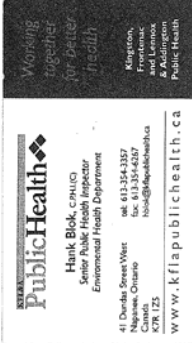
	Name, Position, Agency and Address	Document Form	Phone, fax, and e-mail	Types of EA Projects to be Circulated	March 5 letter response
24.	Hank Blok C.P.H.I.(C) Senior Public Health Inspector 41 Dundas Street West Napancee Ontario K7R 1Z5	1 hard copy	hblok@kflpublichealth.ca		
Ministry of Municipal Affairs and Housing					
25.	Petersen, Ken Planning Innovation Section Provincial Planning Policy Branch Ministry of Municipal Affairs & Housing 777 Bay Street, 14th Floor Toronto ON M5G 2E5		Ken.Petersen@ontario.ca		
26.	Mr. Michael Elms, Manager Eastern Municipal Services Office &Housing Community Planning and Development 8 Estate Lane, Rockwood House Kingston ON K7M 9A8	1 hard copy	T: (613) 545-2132 F: (613) 548-6822 Michael.Elms@ontario.ca	Projects meeting above criteria in upper- and single-tier municipalities of Hastings and Renfrew eastward including the Ottawa and Kingston areas	

Table WS-1: Contact List for March 22 Letter – Follow-up and Workshop Invitation Letter

	Name, Position, Agency and Address	Document Form	Phone, fax, and e-mail	Types of EA Projects to be Circulated	March 5 letter response
	Southern Region				
27.	Peterborough District Ministry of Natural Resources Riverside Drive, P.O. Box 220 Peterborough, ON K8A 6X4 Att: Katie Novacek, District Planner	2 hard copies	T: (705) 755-3294 F: (705) 755-3125 Katie.novacek@ontario.ca	All individual or Class EAs in District which covers upper- and single-tier municipalities Prince Edward County, Kawartha Lakes, Northumberland and the southern halves of Peterborough, Hastings, Lennox and Addington and Frontenac.	
Government Review Team List for Aboriginal Information					
1.	Mr. Fred Hosking Senior Claims Analyst Specific Claims Branch Ontario Research Team Department of Indian and Northern Affairs 10 Wellington St., Room 1310 Gatineau QU K1A 0H4	Government Input	T: (819) 953-1940 F: (819) 997-9873 hoskingf@inac.gc.ca	DO NOT send entire EA document. Send map and legal description of the undertaking. Contacts will provide input on federal specific claims. Specific Claims Map updated quarterly Specific Claims Information	
Ministry of Aboriginal Affairs (MMA)					
2.	Pam Wheaton, Director Aboriginal & Ministry Relationships Branch Ministry of Aboriginal Affairs 720 Bay Street, 4th Floor Toronto ON M5G 2K1	1 hard copy	T: (416) 326-4053 F: (416) 326-4017 Pam.Wheaton@Ontario.ca	Any projects meeting either of following criteria: - potentially affecting first Nation Communities where land claims or litigation are involved. - potentially affecting Crown land and resources usage.	

Table WS-1: Contact List for March 22 Letter – Follow-up and Workshop Invitation Letter

	Name, Position, Agency and Address	Document Form	Phone, fax, and e-mail	Types of EA Projects to be Circulated	March 5 letter response
3.	Technical Contact (same office): Francois Lachance Senior Policy Advisor		T: (416) 326-4754 francois.lachance@ontario.ca		
4.	Franklin Roy, Director Litigation Management and Resolution Branch Department of Indian and Northern Affairs 10 Wellington St., 25 Eddie 1430 Gatineau QC K1A 0H4	Government Input	T: (819) 997-3582 F: (819) 997-1679 royf@inac.gc.ca	DO NOT send entire EA document. Send map and legal description of the undertaking. Contacts will provide input on federal litigation.	Response received from: Josee Beaugard Request: remove Franklin Roy and add him to the contact list
5.	Josee Beaugard Litigation Team Leader Eastern Litigation Directorate Ontario/ Nunavut Team Indian and Northern Affairs Litigation Management and Resolution Branch 25 Eddy Street Gatineau, Quebec K1A 0H4			DO NOT send entire EA document. Send map and legal description of the undertaking. Contacts will provide input on federal litigation.	
6.	Mr. Gregg Dahl Senior Policy Analyst Office of the Federal Interlocutor for Métis and non-status Indians 66 Slater Street - Room 1218 Ottawa ON K1A 0H4	Government Input	T: (613) 992-3705 F: (613) 996-1737 dahlg@inac.gc.ca		
7.	Meish Podlog Senior Negotiator Ministry of Aboriginal Affairs 160 Bloor St. E, Suite 400 Toronto, ON M7A 2E1	Ontario project manager for the Algonquin claim negotiations	tel: 416-326-4775 fax: 416-326-4017		

Table WS-1: Contact List for March 22 Letter – Follow-up and Workshop Invitation Letter

	Name, Position, Agency and Address	Document Form	Phone, fax, and e-mail	Types of EA Projects to be Circulated	March 5 letter response
List of Aboriginal Groups of Interest					
1.	Alderville First Nation P. O. Box 46, R.R. #4 ROSENEATH, Ontario K0K 2X0 Chief James R. Marsden	1 hard copy	Ph: (905) 352-2011 Fax: (905) 352-3242 jbmarsden@eagle.ca	Ogemawahj	
2.	Algonquins of Pikwakanagan First Nation P.O. Box 100 Pikwakanagan, GOLDEN LAKE, Ontario K0J 1X0	1 hard copy	Chief Kirby Whiteduck Ph: (613) 625-2800 Fax: (613) 625-1149 chiefcouncil@pikwakanagan.ca	N/A	
	Chippewas of Mnjikaning (Rama) 5884 Rama Rd. Suite 200 RAMA, ON L0K 1T0	1 hard copy	Chief Sharon Stinson Henry Ph: (705) 325-3611 Fax: (705) 325-0879 chief@mnjikaning.ca	Ogemawahj	Sent letter by Fred Jahn March 11 indicating interest in getting involved
3.	Fred Jahn Director of Facilities and Operations Chippewas of Rama First Nation 5884 Rama Rd. Suite 200 RAMA, ON L0K 1T0		Fred Jahn Director of Facilities and Operations Ph: (705) 325-3611 x 1540 Fax: (705) 325-0879 Fred.jahn@ramafirstnation.ca		

Table WS-1: Contact List for March 22 Letter – Follow-up and Workshop Invitation Letter

	Name, Position, Agency and Address	Document Form	Phone, fax, and e-mail	Types of EA Projects to be Circulated	March 5 letter response
4.	Curve Lake First Nation 22 Winookeeda Road CURVE LAKE, ON KOL IRO	1 hard copy	Chief Keith Knott Ph: (705) 657-8045 Fax: (705) 657-8708 tiffany@curvelakefn.ca	N/A	
5.	Hiawatha First Nation 123 Paudash Street R. R. #2 KEENE, ON KOL 2GO	1 hard copy	Chief Laurie Carr Ph: (705) 295-4421 Fax: (705) 295-4424 lcarr@hiawathafn.ca	UIC	
6.	Mississaugas of Scugog Island 22521 Island Road PORT PERRY, ON L9L 1B6	1 hard copy	Chief Tracy Gauthier Ph: (905) 985-1940 Fax: (905) 985-8828 tgauthier@scugogfirstnation.com	Ogemawahj	
7.	Mohawks of the Bay of Quinte 13 Old York Road R. R. #1, DESERONTO, ON KOK 1XO	1 hard copy	Chief R. Donald Maracle Ph: (613) 396-3424 ext. 121 Fax: (613) 396-3627 rdonm@mbq-tmt.org	N/A	
8.	Wendat-Huron First Nations 255 Place Chef Michel Laveau Wendake (Québec) G0A 4V0 CANADA		Chief Konrad Sioui administration@cnhw.qc.ca		

Workshop Correspondence with a Member of the GRT

From: O'Neill, Ted
Sent: Tuesday, March 23, 2010 8:30 AM
To: Mundie, Donna (OMAFRA); Valaitis, Ray (OMAFRA)
Cc: Weerasinghe, Bhagya
Subject: RE: Waste Management of Canada Corporation, Beechwood Road Environmental Centre, EA New Landfill Footprint

Thank you, we will make the contact name change.
Ted

J.E. (Ted) O'Neill (B.Sc. (Hon.)) | Associate, Environmental Assessment & Biology Group Manager|
Golder Associates Ltd.
32 Steacie Drive, Kanata, Ontario, Canada K2K 2A9
T: [+1] (613) 592 9600 | **F:** [+1] (613) 592 9601 | **C:** [+1] 613 799 7109 | **E:** TONEill@golder.com |
www.golder.com

From: Mundie, Donna (OMAFRA) [mailto:donna.mundie@ontario.ca]
Sent: Monday, March 22, 2010 5:33 PM
To: Valaitis, Ray (OMAFRA); O'Neill, Ted
Subject: RE: Waste Management of Canada Corporation, Beechwood Road Environmental Centre, EA New Landfill Footprint

Thanks for the notice.
Ray Valaitis is the OMAFRA contact for this project.
If you have any questions, please feel free to call.

From: BREC [mailto:BREC_WMCCTORdevelopment@golder.com]
Sent: Monday, March 22, 2010 5:04 PM
To: Mundie, Donna (OMAFRA)
Subject: RE: Waste Management of Canada Corporation, Beechwood Road Environmental Centre, EA New Landfill Footprint

Dear Ms. Mundie:

On behalf of Waste Management of Canada, we are sending you the attached letter to inform you of the progress of the Environmental Assessment for the Beechwood Road Environmental Centre (BREC) New Landfill Footprint, because you have been identified as a member of the Government Review Team for Environmental Assessments in Ontario. Please contact the undersigned if you have any difficult opening the attached files or have any questions. A hard copy of the letter is being sent to you by regular mail.

Ted O'Neill

J.E. (Ted) O'Neill (B.Sc. (Hon.)) | Associate, Environmental Assessment & Biology Group Manager|
Golder Associates Ltd.
32 Steacie Drive, Kanata, Ontario, Canada K2K 2A9
T: [+1] (613) 592 9600 | **F:** [+1] (613) 592 9601 | **C:** [+1] 613 799 7109 | **E:** TONEill@golder.com |
www.golder.com

Workshop Correspondence with a Member of the GRT

From: Dea, Jeffrey (ENE) [mailto:Jeffrey.Dea@ontario.ca]
Sent: Tuesday, March 23, 2010 11:36 AM
To: Murphy, Tim - BUR
Cc: Larry.Fedec@aecom.com; Shoniker, Blair
Subject: Ottawa

Tim,

Further to our discussion last Friday, pls. find attached mapping that shows the area of interest for the Huron Wendat First Nation. Looks like it's fairly close to Ottawa. I'll try to find out more about that and will follow-up.

Also, pls. note that the Curve Lake First Nation has requested that EA related materials being sent to them be provided by e-mail, if possible. The e-mail address that you should use is:

dutytoconsult@curvelakefn.ca

Regards,

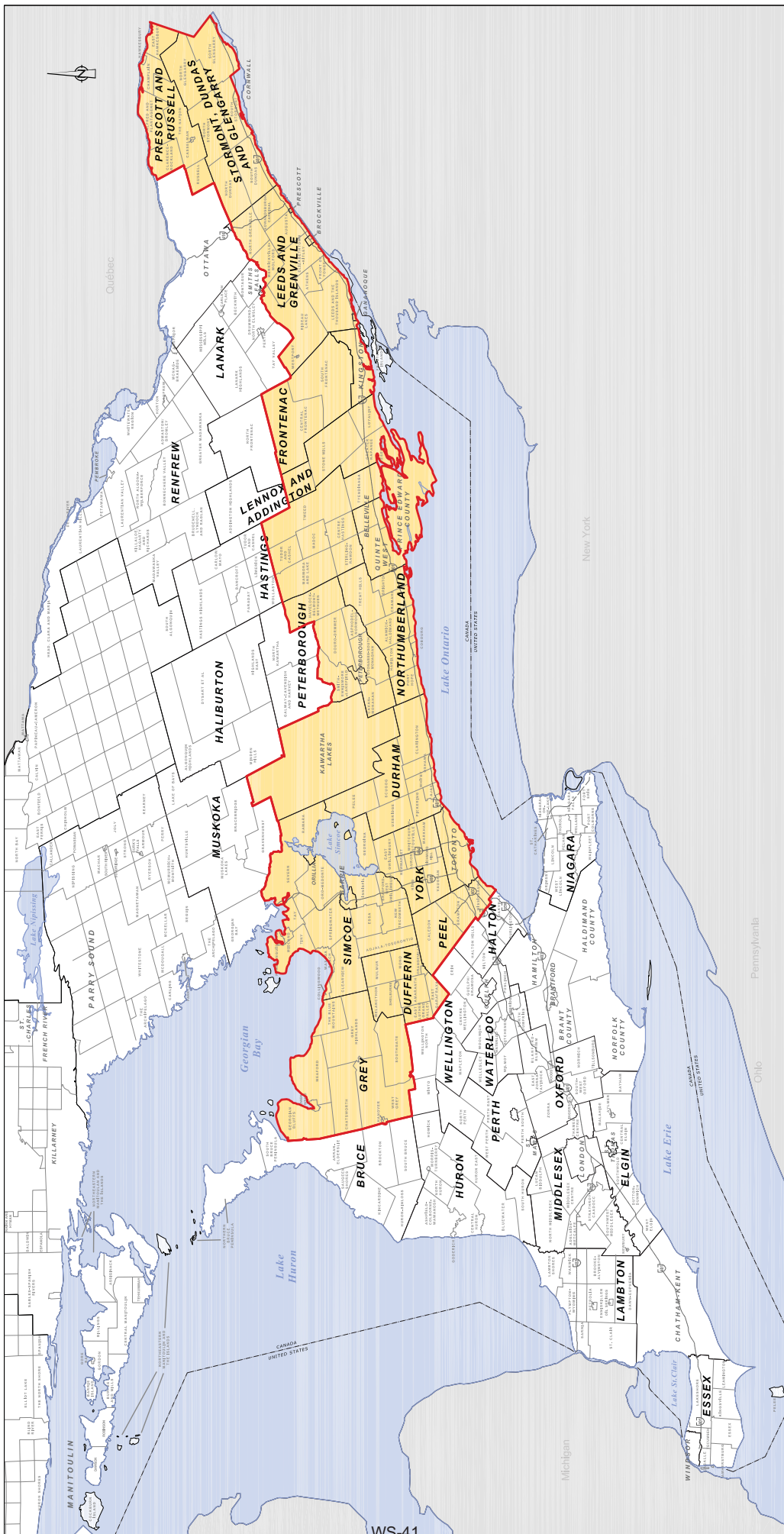
Jeff.

D. Jeffrey Dea
Project Officer

EA Project Coordination Section
Environmental Assessment & Approvals Branch
Ministry of the Environment
2 St. Clair Ave. W., Floor 12A
Toronto ON M4V 1L5
t: 416-314-7213 / 1-800-461-6290
f: 416-314-8452
e: jeffrey.dea@ontario.ca

Waste Management recycles enough paper every year to save 41 million trees. By not printing this email, you can help save even more.

Huron-Wendat Area of Interest



Area of Mandatory Consultation for the Discovery of Archaeological Remains

Base Information from the Ministry of Municipal Affairs and Housing

Workshop Correspondence with a Member of the GRT

From: schmitt@alcdsb.on.ca [mailto:schmitt@alcdsb.on.ca]
Sent: March 24, 2010 2:08 PM
To: BREC
Subject: Information from BREC website:

* Name : Michael Schmitt
* Address : 151 Dairy Ave
* City : Napanee
* Province : ON
* Postal Code : K7R 4B2
* Email : schmitt@alcdsb.on.ca

Comments:

thank you for the invitation to attend the session of March 25; I am unable to attend as I will be out of town; I should inform you that a group has approached our board to seek our voice in halting this project. Of course the board is not prepared to become politically involved as we are not in a position to make any judgements at this time. Keeping us in the information loop will be very important so that my team and the trustees have information that is accurate.

thank you
Michael Schmitt, Director of Education, ALCDSB

Waste Management recycles enough paper every year to save 41 million trees. By not printing this email, you can help save even more.

Workshop Correspondence with a
Member of the GRT (FN related)



Indian and Northern
Affairs Canada

Affaires indiennes
et du Nord Canada

www.inac.gc.ca

www.ainc.gc.ca

Your file - Votre référence

Our file - Notre référence

31 MAR 2010

Tim Murphy
Waste Management of Canada Corporation
R.R. #6, 1271 Beechwood Road
NAPANEE, ONTARIO K7R 3L1

Dear Mr. Murphy:

**Re: Waste Management of Canada Corporation, Beechwood Road
Environmental Centre (BREC), Environmental Assessment New
Landfill Footprint**

I am writing in response to your letter of March 22, 2010 addressed to Josée Beauregard inquiring about any claims that may affect the subject property. I regret that we were unable to respond earlier.

We can inform you that our inventory does not include active litigation in the vicinity of this property. Please note that we are unable to make any representations regarding potential or future claims.

We cannot make any comments regarding claims filed under other departmental policies. For information on any claims you should also contact Don Boswell of the Specific Claims Branch at (819) 953-1940 to inquire about any Specific Claims. To inquire about any current Comprehensive Claims, please contact Nicole Cheechoo of Treaty and Aboriginal Government Central Operations at (819) 997-3499.

If you have any further questions please do not hesitate to contact me at (819)994-1947.

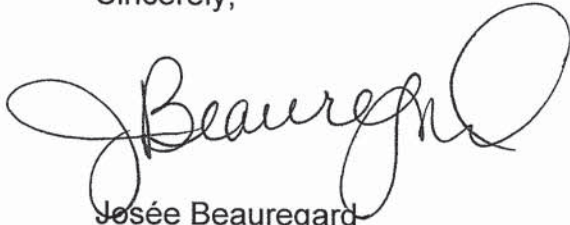
page 1 of 2

.../2

Canada

WS-43

Sincerely,

A handwritten signature in black ink, appearing to read "Beauregard". The signature is fluid and cursive, with a large loop at the end.

Josée Beauregard
Litigation Team Leader
Eastern Litigation Directorate
Litigation Management and Resolution Branch

DISCLAIMER: In this Disclaimer, "Canada" means Her Majesty the Queen in right of Canada and the Minister of Indian Affairs and Northern Development and their servants and agents. Canada does not warrant or assume any legal liability or responsibility for the accuracy, completeness, or usefulness of any data or information disclosed with this correspondence or for any actions in reliance upon such data or information or on any statement contained in this correspondence. Data and information is based on information in departmental records and is disclosed for convenience of reference only. Canada does not act as a representative for any Aboriginal group for the purpose of any claim. Information from other government sources and private sources (including Aboriginal groups) should be sought, to ensure that the information you have is accurate and complete.

Workshop Correspondence with a Member of the GRT

From: Cooper, Linda - KIN [mailto:lcooper1@wm.com]
Sent: Thursday, April 01, 2010 9:29 AM
To: O'Neill, Ted; Weerasinghe, Bhagya; Murphy, Tim - BUR
Subject: Fw: Waste Management Workshop

I received this out of office from the Limestone Bd - so I called them this am and asked what was the best way to get info to the School Bd (Helen Chadwick is a trustee) in a timely fashion. Mail is the best way - it just needs to be sooner than last time - these folks have day jobs and just pick up there correspondence - including referred emails - when they are in which is not every day.

From: Jane N. Douglas <douglasja@limestone.on.ca>
To: Cooper, Linda - KIN
Sent: Wed Mar 31 16:42:00 2010
Subject: Re: Waste Management Workshop

I am away from the office from March 24 - April 5, 2010, and returning April 6. Messages received will not be processed or forwarded during this time. If your enquiry is of an urgent nature, please call the LDSB Education Centre directly at 613.544.6920 for assistance.

Waste Management recycles enough paper every year to save 41 million trees. By not printing this email, you can help save even more.

Ministry of Tourism and Culture
Cultural Services Unit, 4th Fl.
400 University Ave
Toronto, ON M7A 2R9

Ministre du Tourisme et de la Culture
400, avenue University
Toronto, ON M7A 2R9



April 7, 2010

Tim Murphy
Waste Management of Canada Copr.
Richmond Landfill
Napanea, Ontario K7R 3L1

Dear Mr. Murphy:

Subject : Beechwood Road Environmental Centre (BREC)
Location : Napanea, Lennox and Addington

As part of the process under the Environmental Assessment Act, the Ministry of Tourism and Culture has an interest in the conservation of cultural heritage resources including:

- Archaeological resources;
- Built heritage resources; and
- Cultural heritage landscapes.

We have reviewed your project and have the following comments:

The subject property for this project is considered to have archaeological potential as it meets the following provincial criteria for archaeological potential:

- being within 200 meters of a secondary water source (creek, stream, pond, etc.)
- Also, there are five archaeological sites within a 5km Radius and one of those sites is within less than 500m.

An archaeological assessment by an archaeologist licensed under the Ontario Heritage Act will therefore be required for this project prior to any ground disturbances and/or site alterations. The assessment report must be in compliance with the Ministry of Culture. The licensed archaeologist will forward all completed archaeological assessment reports to the Ministry of Culture for review by an Archaeological Review Officer.

In the event that human remains are found, the local police must be notified immediately, followed promptly by notification to this office.

Please do not hesitate to contact the undersigned if you have any questions.

Yours truly,

A handwritten signature in black ink, appearing to read "Alejandro Cifuentes".

Alejandro Cifuentes
Heritage Planner
(416)314-7159
Alejandro.cifuentes@ontario.ca

cc: Katherine Kirzati, Heritage Planner (East Region), Min. of Tourism and Culture
Ted O'Neill, Golder Associates.
Linda Cooper, Waste Management of Canada

Screening for Impacts to Built Heritage and Cultural Heritage Landscapes

This check list will help identify potential cultural heritage resources, determine how important they are and indicate whether a cultural heritage impact assessment is needed.

Step 1 – Screening Potential Resources		
Built heritage resources		
YES	NO	Does the property contain any built structures, such as:
<input type="checkbox"/>	<input type="checkbox"/>	▪ Residential structures (e.g. house, apartment building, trap line shelter)
<input type="checkbox"/>	<input type="checkbox"/>	▪ Agricultural (e.g. barns, outbuildings, silos, windmills)
<input type="checkbox"/>	<input type="checkbox"/>	▪ Industrial (e.g. factories, complexes)
<input type="checkbox"/>	<input type="checkbox"/>	▪ Engineering works (e.g. bridges, roads, water/sewer systems)
Cultural heritage landscapes		
YES	NO	Does the property contain landscapes such as:
<input type="checkbox"/>	<input type="checkbox"/>	▪ Burial sites and/or cemeteries
<input type="checkbox"/>	<input type="checkbox"/>	▪ Parks
<input type="checkbox"/>	<input type="checkbox"/>	▪ Quarries or mining operations
<input type="checkbox"/>	<input type="checkbox"/>	▪ Canals
<input type="checkbox"/>	<input type="checkbox"/>	▪ Other human-made alterations to the natural landscape

Step 2 – Screening for Potential Significance		
A property's heritage significance may be identified through the following:		
YES	NO	1. Is it designated or adjacent to a property designated under the Ontario Heritage Act?
<input type="checkbox"/>	<input type="checkbox"/>	
<input type="checkbox"/>	<input type="checkbox"/>	2. Is it listed on the municipal heritage register or provincial register (e.g. Ontario Heritage Bridge List)?
<input type="checkbox"/>	<input type="checkbox"/>	
<input type="checkbox"/>	<input type="checkbox"/>	3. Is it within or adjacent to a Heritage Conservation District?
<input type="checkbox"/>	<input type="checkbox"/>	
<input type="checkbox"/>	<input type="checkbox"/>	4. Does it have an Ontario Heritage Trust easement or is it adjacent to such a property?
<input type="checkbox"/>	<input type="checkbox"/>	
<input type="checkbox"/>	<input type="checkbox"/>	5. Is there a provincial or federal plaque?
<input type="checkbox"/>	<input type="checkbox"/>	
<input type="checkbox"/>	<input type="checkbox"/>	6. Is it a National Historic Site?
<input type="checkbox"/>	<input type="checkbox"/>	
<input type="checkbox"/>	<input type="checkbox"/>	7. Does documentation exist to suggest built heritage or cultural heritage landscape potential? (eg. research studies, heritage impact assessment reports, etc.)
<input type="checkbox"/>	<input type="checkbox"/>	
<input type="checkbox"/>	<input type="checkbox"/>	8. Was the municipality contacted regarding potential cultural heritage value? Were any concerns expressed?
<input type="checkbox"/>	<input type="checkbox"/>	
<input type="checkbox"/>	<input type="checkbox"/>	9. What are the dates of construction? Are the buildings and/or structures over 40 years old? Is it within a Canadian Heritage River watershed?
<input type="checkbox"/>	<input type="checkbox"/>	
<input type="checkbox"/>	<input type="checkbox"/>	10. Is a renowned architect or builder associated with the property?

Note: If you answer "yes" to any of the questions in Step 2, a heritage impact assessment is required.

Step 3 – Screening for Potential Impacts		
YES	NO	
<input type="checkbox"/>	<input type="checkbox"/>	Destruction of any, or part of any, significant heritage attribute or feature.
<input type="checkbox"/>	<input type="checkbox"/>	Alteration that is not sympathetic, or is incompatible, with the historic fabric or appearance.
<input type="checkbox"/>	<input type="checkbox"/>	Shadows created that alter the appearance of a heritage attribute or change the visibility of a natural feature or plantings, such as a garden.
<input type="checkbox"/>	<input type="checkbox"/>	Isolation of a heritage attribute from its surrounding environment, context or a significant relationship.
<input type="checkbox"/>	<input type="checkbox"/>	Direct or indirect obstruction of significant views or vistas from, within, or to a built and natural feature.
<input type="checkbox"/>	<input type="checkbox"/>	A change in land use such as rezoning a battlefield from open space to residential use, allowing new development or site alteration to fill in the formerly open spaces.
<input type="checkbox"/>	<input type="checkbox"/>	Land disturbances such as a change in grade that alters soils and drainage patterns that adversely affect an archaeological resource.

Contents of a Heritage Impact Assessment

As a minimum, the following should be included in a heritage impact assessment:

1. Historical research, site analysis and evaluation
2. Identification of the significance and heritage attributes of the property
3. Description of the proposed development/ site alteration
4. Measurement of impacts
5. Consideration of alternatives, mitigation and conservation methods
6. Implementation and monitoring schedules
7. Summary statement and conservation recommendations

For more information, refer to Ministry of Tourism and Culture *Info Sheet#5: Heritage Impact Assessments and Conservation Plans* as part of the Ontario Heritage Tool Kit, which is available on the Ministry's website www.culture.gov.on.ca .

Workshop Correspondence with Concerned Citizens of Tyendinaga Township

----- Original Message -----

From: Murphy, Tim - BUR
To:
Sent: Thu Apr 15 08:49:38 2010
Subject: Re: BREC Materials

Hello,

Our final assessment of the alternatives will be contained in our Terms of Reference. If you wish to provide comment on our preliminary assessment of alternatives, please go to our website at brec.wm.com and in the Resources section there is an electronic copy of the workbook from our Work Shop on March 25 that has a summary of the preliminary assessment of alternatives and a place for comments. I hope you will review this and send us your comments. You can contact me by email with any further questions.

Regards,

Tim

Tim Murphy, MCIP, RPP
Waste Management of Canada Corporation

Sent from my BlackBerry Wireless Handheld

----- Original Message -----

From:
To: Murphy, Tim - BUR
Sent: Thu Apr 15 07:37:30 2010
Subject: BREC Materials

Tim,

I have reviewed the materials you provided yesterday and noted the statement that WM had considered six alternatives.

Could you please provide me with a copy of that study?

Thanks for your assistance

Waste Management recycles enough paper every year to save 41 million trees. By not printing this email, you can help save even more.

**Concerned Citizens of Tyendinaga Township Letter to the Workshop on Alternatives To,
Alternative Methods & Evaluation Criteria**

22 April 2010

Response to
Workshop on Alternatives To, Alternative Methods & Evaluation Criteria
Beechwood Road Environmental Centre
dated 25 March 2010

Initial comments:

While I did not attend the event held on 25 March 2010, I was provided a document by Linda Cooper via e-mail dated 16 April 2010. The document provided had the file name "WorkshopWorkbook_FINAL.pdf" and was dated 4/15/2010, 11:37 AM.

My overall reaction to this document is that it significantly glosses over several key issues and dives directly into far less important and secondary discussions. It attempts to direct participants thoughts past the essential questions and on to those secondary issues without critical examination of those points at the centre of the debate. This approach does a disservice to the community and does not enhance the credibility of the early stages of this process.

Given the history of the existing dump, a proposed expansion, a previous EA (that even WM representatives now admit was horribly managed and which resulted in the rejection of the expansion), it seems very important that this process be completely transparent and above reproach. Early indications do not give me confidence that WM has learned from this history.

Detailed Comments:

Part 1: Need and the Rationale for Waste Disposal Services in Eastern Ontario

This section does not include all the necessary data to inform participants as to the real need (or not) for the proposed BREC. For example, the section does not mention the proposed Durham region's garbage incinerator which, if approved, would accept a minimum of 140,000 tonnes of waste per year and apparently could be expanded to accept up to 400,000 tonnes per year. Also, I note the same section neglects to mention WM's own proposal to establish a nearly identical facility to the BREC in the Ottawa area to be known as the West Carleton Environmental Centre. This represents, a further 1,000,000 tonnes per year of waste handling capacity with 400,000 tonnes per year of landfilling included in the plan. These two omissions dramatically misrepresent the future status of landfill need in Eastern Ontario. What other relevant factors have been omitted from this section?

The description of the need for landfill capacity in Eastern Ontario implies that ONLY garbage from those communities listed on page 3 will be accepted at the BREC. Will WM affirm in a legally binding manner that the service area for the proposed facility will be strictly limited to this area? If so, this seems to be a much larger proposal than is

needed considering the Durham and WCEC proposals now on the table, particularly considering the two largest population centres, by far, are represented by these two communities.

One of the strangest arguments I have read on the need for landfill capacity is that, while waste diversion is the preferred solution to the "garbage problem," the region still needs cheap landfilling capacity until waste diversion levels improve. This argument is illogical. The most certain means for ensuring that waste diversion rates rise is to ensure the available landfilling capacity is minimized and ultimately eliminated. As the landfilling capacity decreases, its cost relative to diversion will rise, making diversion the more economically attractive solution.

Part 2: Alternatives To a New Landfill Footprint

The information provided within this document does not include the analysis WM performed in order to conclude, for example, why establishing a landfill elsewhere was deemed less acceptable than BREC. This is a key point since the history of the Richmond landfill expansion should give anyone concerns that approval of this proposal can and will be obtained. To fully understand the questions in this section and to answer them in a meaningful way would require far more detail on the nature of WM's analysis. Therefore, based on the information currently provided, it is impossible to agree that alternative 6 is better or worse than any of the others listed.

TABLE 2: ALTERNATIVE METHODS (WAYS) FOR DEVELOPING A NEW LANDFILL FOOTPRINT

The only appropriate response to this section of the document is that it is overwhelmingly premature to be discussing details of landfill footprints. Given the inherently unsuitable nature of the underlying fractured bedrock, it is extremely unlikely any footprint will be available that will be protective of the vital groundwater resource. The problems with the existing dump confirm the inherent risks associated with landfilling at this location.

TABLE 3: CRITERIA FOR EVALUATING ALTERNATIVES (sic) METHODS FOR DEVELOPING A NEW LANDFILL FOOTPRINT

Again, it is inappropriate to be engaging the public in details of evaluation criteria for a landfill footprint until there is some credible evidence that groundwater, soil and air quality can be protected in such an environment.

It is also inappropriate to use a questionnaire, completed by participants with potentially little or no technical background, as a basis for designing an evaluation process. This is a process that must be guided by expert knowledge. Local citizens should be funded to hire their own independent experts to study the proposal and educate them adequately so they can participate in a truly meaningful manner. In fact, I understand at least one citizen's group has requested just this type of funding from WM.

Conclusion:

The BREC proposal suffers from a serious credibility problem due to both the serious problems of the existing landfill and the history of the previous WM attempt to expand it. It would seem clear to those of us who were heavily involved in the previous EA that a far wiser approach for WM to take would be to identify a more suitable location for any future landfill facility. I am not aware of any overriding reason for continuing to flog this dead horse. None of the materials provided thus far concerning the BREC proposal have adequately dealt with this question. Until it is addressed to the satisfaction of fearful concerned citizens, WM cannot expect this proposal to be welcomed.

From a Member of the Concerned Citizens of the Tyendinaga Township
Napanee, ON



Appendix C.3 Workshop Materials





Terms of Reference for a New Landfill Footprint
Consultation Record

Appendix C.3.1 Workbook





**Terms of Reference for Environmental Assessment
New Landfill Footprint
Beechwood Road Environmental Centre**

Workshop on Alternatives To, Alternative Methods & Evaluation Criteria

March 25, 2010

Agenda

AGENDA

- 6:00 Register/Supper
- 6:15 Opening remarks and overview of workshop
 – Randy Harris

The participants will be divided into three groups: A, B or C. There are three tables, each with a facilitator, focusing on one of three topics: 1) Alternatives to a new landfill footprint; 2) Alternative methods or ways of developing a new landfill footprint, and 3) criteria that will be used in the EA to compare alternatives and identify a preferred alternative. Each person will receive a workbook to complete tonight. Each group will go through the workbooks assisted by a facilitator. You will receive some information and then be asked for your input/opinion. There will be a short break between table sessions. When we reconvene you will rotate to the next group. Everything you need is in the workbook. If you have questions, the facilitator will help and further technical resources are also available. There is space available in the workbook for you to add any comment or question that you want.

TIME	Table 1: Alternatives To	Table 2: Alternative Methods	Table 3: Evaluation Criteria
6:30	Group A	Group B	Group C
7:25	BREAK	BREAK	BREAK
7:30	Group C	Group A	Group B
8:25	BREAK	BREAK	BREAK
8:30	Group B	Group C	Group A

9:25 Summary and Wrap Up

9:30 Adjourn

Please tell us about yourself.

Under the Freedom of Information and Protection of Privacy Act and the EAA, unless otherwise stated in the submission, any personal information such as name, address, telephone number and property location included in a submission will become part of the public records files for this matter and will be released, if requested, to any person.

NAME: _____

ADDRESS: _____

POSTAL CODE _____

PHONE: _____

EMAIL: _____

GROUP: _____ (A, B or C)

Tell us what you think!

What did you think about the workshop? How could we improve it? Did we discuss the right topics? Use the back of the page if you need more space.



TABLE 1: ALTERNATIVES TO A NEW LANDFILL

Facilitator: Michelle Armstrong (FoTenn)

Technical Support: Ted O'Neill (Golder)

Part 1: Need and the Rationale for Waste Disposal Services in Eastern Ontario

- Since the Minister of the Environment rejected WM's previous EA, we have listened to the community and considered the need for the future of the Napanee landfill and waste disposal services in Greater Napanee and eastern Ontario. We have concluded that there continues to be an opportunity for WM to meet these needs, in a manner consistent with the wishes of Napanee, its residents and the province of Ontario. The current landfill can be safely closed and monitored and a new integrated waste management facility established to take its place.
- Under its current Certificate of Approval, the Napanee Landfill can accept a maximum of 125,000 tonnes of waste per year for disposal. Up until 2004, the site was operating at that fill rate. At that time, WM made the decision to divert waste that had previously gone to the Napanee Landfill to other locations in order to extend the life of the site as presently approved. These alternatives are environmentally and economically less preferred than having disposal capacity at the Napanee Landfill. The current approved landfill on the WM property will reach capacity in the near future.
- WM conducted an analysis to estimate the need for landfill disposal. Since the landfill site is located in eastern Ontario, the waste disposal needs were limited to eastern Ontario. Eastern Ontario includes the following census divisions, as defined by Statistic Canada for 2006:

Table 1: Eastern Ontario Waste Generation and Diversion (2006)

Durham (pop. 561,258)	Northumberland (pop. 80,963)
Haliburton (pop.16,147)	Ottawa (pop. 812,129)
Hastings (pop. 130,474)	Peterborough (pop. 133,080)
Kawartha Lakes (pop. 74,561)	Prescott and Russell (pop. 80,184)
Lanark (pop. 63,785)	Prince Edward (pop. 25,496)
Leeds and Grenville (pop. 99,206)	Renfrew (pop. 97,545)
Lennox and Addington (pop. 40,542)	Stormont, Dundas and Glengarry (pop. 110,399)
Frontenac (pop. 143,865)	

- These census divisions have a total population of 2,469,634, or 20% of the total 2006 Statistics Canada population for Ontario. It is assumed that the amount of waste generation on a per capita basis is consistent across the province, therefore the estimated 2006 waste generation and disposal quantities for eastern Ontario are as shown in Table 2.

Table 2: Eastern Ontario Waste Generation and Diversion (2006)

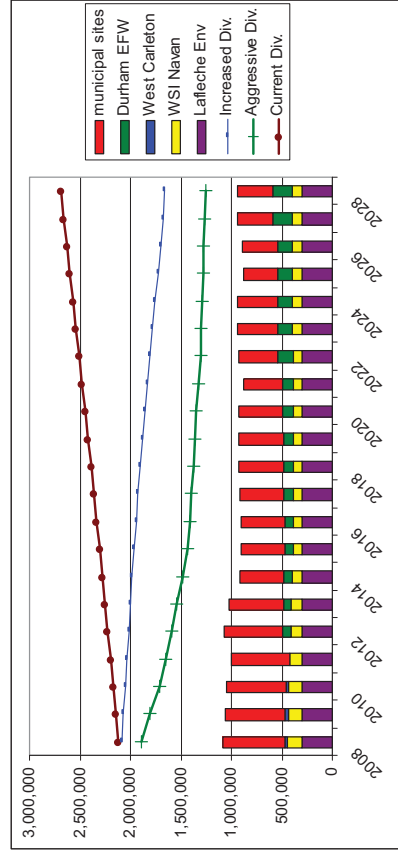
	Total Waste Generated	Waste Diverted	Residual Waste Disposed
Residential	1,043,340	302,293 (29%)	741,047
Non residential	1,523,587	177,078 (12%)	1,346,509
Total	2,566,927	479,371 (19%)	2,087,556



For more information, please see our website at <http://brec.wm.com>, call us at 613-354-1060 or email rharris@wm.com or lcooperl@wm.com.

- Based on this information, the 2008 need for residual waste disposal capacity in eastern Ontario is conservatively taken as 2.1 million tonnes per year, of which 1.3 million tonnes is from non-residential sources.
- Next we looked at existing disposal capacity in eastern Ontario. This includes four privately-owned and several municipally-owned landfills in eastern Ontario.
- Based on the available information, we estimated that the municipal sites in eastern Ontario are currently accepting approximately 560,000 tonnes of waste per year. A number of these sites will be reaching capacity and closing over the next several years and there are no major municipal landfill developments or expansions planned. This will put continued pressure on the existing privately-owned landfill sites in eastern Ontario.
- Next we estimated the projected waste disposal needs under three scenarios:
 - **Scenario 1 – the status quo**, which was based on waste generation increasing at an annual increase of 1.2% and waste diversion remaining constant at the current levels of 30% for residential and 12% for IC & I;
 - **Scenario 2 – increased diversion**, which is the same waste generation increase along with an increase in diversion rates of 1.5% per year until 60% diversion rate is reached; and
 - **Scenario 3 – aggressive diversion**, which is the same waste generation increase along with an increase in diversion rates of 2% per year up to 60%.
- Our analysis showed that with an aggressive increase in waste diversion (Scenario 3), there is an expected disposal capacity deficit ranging from approximately 520,000 to 708,000 tonnes per year until 2015. Thereafter, the highly aggressive waste diversion assumptions, particularly those for IC&I waste in the City of Ottawa, lead to a disposal deficit which ranges from 310,000 to 510,000 tonnes per year through the year 2028.

• Figure: Eastern Ontario Residual Waste Disposal Needs vs. Disposal Capacity



- This analysis concludes that there is an ongoing need for residual waste disposal services in eastern Ontario for at least the next 20 years. The disposal capacity deficit assuming an increase in current diversion rates ranges from about 720,000 to 1.0 million tonnes per year. Providing an annual residual waste disposal capacity in the range of 400,000 tonnes per year would provide a key service to the communities in eastern Ontario while encouraging the development of higher diversion rates and alternative technologies through the Beechwood Road Environmental Centre for managing the residual waste stream.
- Since the Site is strategically located in the geographic centre of Eastern Ontario, in terms of both haul distances and routes, and since the other private disposal sites are located a considerable distance away in the more eastern parts of the province, it is clear that there is an opportunity for extending the historic waste management role of the WM's Napanee Site as a significant component in the residual waste disposal infrastructure servicing generators in eastern Ontario.
- Based on the above we determined that a new landfill footprint would need to be approximately 13 million cubic metres in size.



Discussion and Comments on Need and the Rationale for Waste Disposal Services in Eastern Ontario

1. Do you understand the analysis that WM undertook to determine if there is a need for waste disposal services in eastern Ontario?

2. Are there other assessment factors that should be included in the analysis? What are they?

3. Do you generally agree that there is a need for waste disposal services in eastern Ontario even with aggressive increases in waste diversion efforts? If no, please share your reasoning.



Part 2: Alternatives To a New Landfill Footprint

- After reaching the conclusion that there the need for waste disposal services in eastern Ontario and that we had an opportunity to provide those services, we looked at different ways of meeting the need. In E/A terms this is known as assessing “Alternatives To”.
- First, we identified a number of potential alternatives on how to provide waste disposal services. The alternatives identified and considered were:
 1. Do nothing;
 2. Use current landfill site as a transfer and processing facility and haul wastes to a disposal facility elsewhere;
 3. Construct a thermal destruction facility at the site;
 4. Establish a new landfill elsewhere in Ontario;
 5. Close the current landfill and establish a new landfill footprint on site; and,
 6. Close the current landfill and establish a new landfill footprint for disposal of residual wastes on-site as part of a comprehensive waste management system that encompasses an facility for increased waste diversion, energy conservation, and opportunities for economic development and community benefits.

Table: Summary of Screening to Identify Reasonable and Practicable Alternatives

Assessment Factor	Alt. #1: Do Nothing	Alt. #2: Transfer Facility	Alt. #3: Thermal	Alt. #4: New Landfill Elsewhere	Alt. #5: New Landfill On-site	Alt. #6: New Landfill On-site – Diversion
a) Consistent with WMCC opportunity?	No	Yes	Yes	Yes	Yes	Yes
b) Technically Feasible?	Yes	Yes	Yes	Yes	Yes	Yes
c) Able to be approved?	Yes	Yes	Yes	Yes	Yes	Yes
d) Consistent with core business competencies?	Yes	Yes	Yes	Yes	Yes	Yes
e) Consistent with strategy for responsible waste management?	No	No	Yes	Yes	No	Yes
f) Enables WMCC to continue to provide cost effective services?	No	No	No	Yes	Yes	Yes
g) Acceptable economic risks and benefits?	No	No	No	No	No	Yes

- Alternative 6, the closure of the current landfill, the construction and operation of a new landfill footprint located north and/or northeast of the current landfill and the establishment of several activities to enhance diversion of waste from the landfill is the preferred alternative. Implementation of this alternative will provide additional waste disposal capacity for Greater Napanee and eastern Ontario for an estimated 20 years. In addition, its location in the east part of Ontario is strategic and economically favourable in terms of haul distances and routes, since other area landfill sites are located in the Ottawa area.
- Finally, WM developed an overall concept to meet the needs for waste disposal in eastern Ontario. Known as the Beechwood Road Environmental Centre (BREC), the proposed new facility comprises several activities to enhance diversion, promote green energy production, provide economic and community benefits and provide for disposal of residual wastes in an environmentally safe manner.



Discussion and Comments on Alternatives To a New Landfill Footprint

1. Do you understand the analysis that WM undertook to determine alternatives to meeting the need for waste disposal services in eastern Ontario?

2. Are there other "alternatives to" that should be considered? What are they?

3. Are there other evaluation criteria that should be considered in the assessment? What are they?

4. Do you agree with the screening of alternatives to determine if they are reasonable and practical?

5. Do you agree with the conclusion that alternative 6 is the preferred alternative?



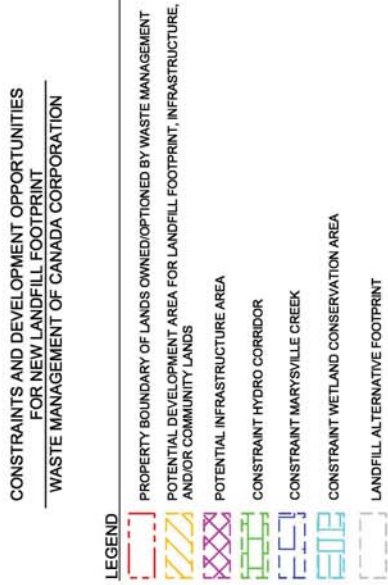
TABLE 2: ALTERNATIVE METHODS (WAYS) FOR DEVELOPING A NEW LANDFILL FOOTPRINT

Facilitator: Bhagya Weerasinghe (Golder)

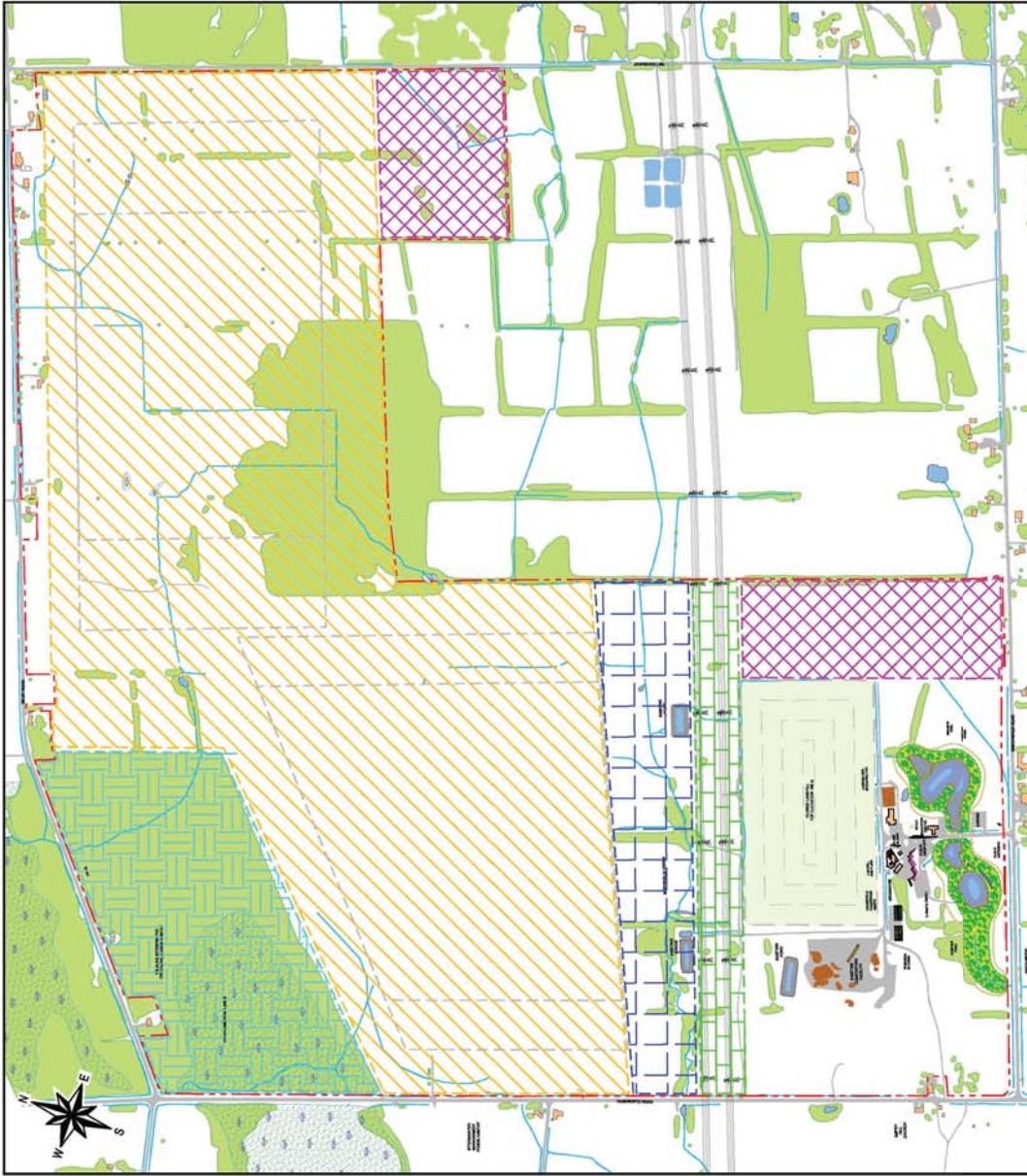
Technical Resource: Randy Harris (Waste Management)

- WM conducted an analysis to determine if there was a need for providing waste disposal services in eastern Ontario and alternatives to provide this service. We concluded that there was a need and that the preferred way of meeting this need was to close the current landfill and establish a new landfill footprint on the site and provide enhanced waste diversion activities to minimize residual waste that would need to be landfilled. In EA terms, this is known as the preferred alternative or proposed 'undertaking' (Discussed at Table 1).
- Identification and evaluation of 'Alternative Methods' or different ways that the project can be developed is a key element of the Environmental Assessment process. WM is proposing to compare alternative footprints for the new landfill at the EA stage. At the TOR stage, envelopes (or areas) for potential development of landfill footprints will be determined. During the EA, a reasonable number of reasonable alternatives will be identified within the development envelopes.
- To identify potential envelopes we determined the approximate area needed to develop a new landfill footprint with an approximate volume of 13 million cubic metres, which would not be higher than the current landfill. We determined that we needed approximately 50 to 55 ha of land.
- Next, we looked at the lands that we currently owned or leased and the constraints on these lands (see Figure).
- WM lands in the south east were excluded because they were separated from other WM lands by privately owned property and were too small for development of the required facilities.
- Next, we excluded the wetland conservation areas on the northwest part of the property as well as a corridor of land in the middle of our property that is occupied by the Hydro transmission corridor and Marysville Creek.
- Two areas were identified which were too small for development as a landfill footprint, but were suitable for potential development of infrastructure such as entrance, scales, maintenance facilities and diversion facilities. One parcel is located immediately east of the existing landfill and the other is located along Johnson's Line East about 1 km north of Beechwood Road.
- The remaining area was identified as an area where landfill footprint alternatives could be located. Other infrastructure to support landfilling and waste diversion operations could be located in this envelope as well as community facilities.
- The envelope for potential development can be divided in half (approximately) thus creating two areas for development of landfill footprint alternatives – the western envelope and eastern envelope.
- The 50-55 ha required for landfill footprint would occupy most of the land within each envelope.
- It is anticipated that two or more alternatives would be identified during the EA for both the western and eastern envelopes.
- The alternatives will comprise different landfill footprint dimensions (variation in height, width, length, etc.), location of entrance, infrastructure, waste diversion facilities and community facilities.
 - During the EA, alternatives will be identified, evaluated and preferred alternative identified.





DRAFT



Discussion and Comments on Alternatives Methods for a New Landfill Footprint

1. Do you understand the analysis that WM undertook to determine general areas (envelopes) for developing new landfill footprint alternatives and other components of the BREC?

2. Are you in agreement with the constraint areas? If no, how would you change them?

3. Are you in agreement with the potential development areas (envelopes)? If no, how would you change them?

4. How many alternative methods should be considered in the EA? Why?



TABLE 3: CRITERIA FOR EVALUATING ALTERNATIVES METHODS FOR DEVELOPING A NEW LANDFILL FOOTPRINT

Facilitator: Blair Shoniker, AECOM

Technical Resource: Tim Murphy (Waste Management)

- WM conducted an analysis to determine if there was a need for providing waste disposal services in eastern Ontario and alternatives to provide this service. We concluded that there was a need and that the preferred way of meeting this need was to close the current landfill and establish a new landfill footprint on the site and provide enhanced waste diversion activities to minimize residual waste that would need to be landfilled. (i.e., as discussed at Table 1)
- WM identified constraint areas and areas for potential development of landfill footprint alternatives (discussed at Table 2). During the EA, a number of reasonable alternatives will be identified, assessed and preferred alternative identified.
- To assist in the assessment and comparative evaluation of alternatives in the EA, the environment will be studied to determine and document existing conditions. Predicted future conditions for each alternative method will be assessed and comparative evaluation undertaken to determine a preferred alternative. The advantages and disadvantages of each alternative will be assessed and documented.
- The environment may be divided into several components for study. WM has identified the following environmental components which will be studied during the EA:

o Atmospheric Environment	o Archaeology and Cultural Heritage
o Geology and Hydrogeology	o Transportation
o Surface Water Resources	o Land Use
o Terrestrial Environment	o Economic
o Aquatic Environment	o Social
o Aboriginal	

- The rationale for each component of the environment is presented in the Table.
- Each component can then be divided into sub-components. For example, air quality, odour and noise would be considered three sub-components of the atmospheric environment component. A rationale for each sub-component is provided in the Table below.
- Indicators are the specific parameters that will be studied for each environmental sub-component. For example, indicators for the Terrestrial Ecosystems sub-component are:
 - o Predicted impact on vegetation communities due to project;
 - o Predicted impact on wildlife habitat due to project; and,



- o Predicted impact of project on vegetation and wildlife including rare, threatened or endangered species.
- During the EA, baseline environmental data will be collected for each alternative, each environmental component and each environmental sub-component. Future environmental conditions will be predicted and assessed and information developed to enable a detailed comparative evaluation of alternatives.
- During the EA, each technical discipline leader (e.g., atmospheric environment leader) will compare and rank alternatives for each of their environmental sub-components. The following table, taken from another EA, shows how the various technical discipline leaders ranked their respective environmental sub-components from “least preferred” to “most preferred.”

Environmental Criteria	Weighting	Alternatives			
		A	B	C	D
Air quality very important		Less Preferred	Less Preferred	Most Preferred	Least Preferred
		Least Preferred	Less Preferred	Most Preferred	Less Preferred
		Less Preferred	Most Preferred	Least Preferred	Most Preferred
		Most Preferred	Less Preferred	Less Preferred	Least Preferred
Equally Preferred					
Site D&O		Less Preferred	Least Preferred	Most Preferred	Most Preferred
Equally Preferred					
Aquatic ecosystems		Less Preferred	Least Preferred	Most Preferred	Most Preferred
Equally Preferred					
Groundwater quality	important	Less Preferred	Least Preferred	Most Preferred	Less Preferred
Surface water quality		Less Preferred	Most Preferred	Least Preferred	Less Preferred
Terrestrial ecosystems		Less Preferred	Most Preferred	Least Preferred	Less Preferred
Cultural & heritage resources		Least Preferred	Less Preferred	Less Preferred	Most Preferred
Recreational facilities		Most Preferred	Most Preferred	Least Preferred	Least Preferred
Equally Preferred					
Archaeological resources	less important	Most Preferred	Less Preferred	Least Preferred	Less Preferred
Effects of costs on customers		Most Preferred	Less Preferred	Least Preferred	Least Preferred
Continued service to customers		Least Preferred	Most Preferred	Least Preferred	Least Preferred
Economic benefit to community		Less Preferred	Most Preferred	Less Preferred	Least Preferred



- In the final stages of the detailed comparative evaluation of alternatives it is necessary to combine (aggregate) the individual preferences for each environmental sub-component into a single preference rating for each alternative in order to rank the alternatives and identify a preferred alternative.
- The aggregation of preferences uses a weighting factor which was provided by the community. In the above example, the community placed the highest importance on air quality, odour, visual impact, noise, site D&A and aquatic ecosystems and the lowest importance on archaeology and economic benefits. This information was used to determine the final overall preferences for the alternatives.



Discussion and Comments on Evaluation Criteria for Detailed Comparative Evaluation of Footprint Alternatives

1. Do you agree with the environmental components that have been identified? If no, what changes would you suggest?

2. Do you agree with the environmental sub-components that have been identified? If no, what changes would you suggest?

3. Do you agree with the rationale provided for the environmental components and sub-components? If no, what changes would you suggest?

4. Do you agree with the indicators provided? If no, what changes or additions would you make? (make changes on the table).

5. Please rate the criteria according to the importance you place on each. This information will be used in the aggregation of preferences for the alternatives.

(Please make changes on the table and provide the rationale for the importance that you selected).



Proposed Assessment Criteria, Rationale, Indicators & Criteria Rating

Component	Sub-component	Rationale	Indicators	Possible Additional Indicators	Criteria Rating	Rationale
Environmental Criteria – Natural Environment						
Atmospheric Environment	Air quality	Waste disposal facilities and associated operations can produce gases containing contaminants that degrade air quality if they are emitted to the atmosphere. Construction and operation activities at a waste disposal facility can lead to increased levels of particulates (dust) in the air. Changes in air quality may affect human health.	<ul style="list-style-type: none"> Modelled air concentrations of indicator compounds (organics, particulates) Number of off-site receptors potentially affected (residential properties, public facilities, businesses, and institutions) 		Very Important	
					Important	
					Less Important	
					Not Important	
	Noise	Construction and operation activities at the facility may result in increased noise levels resulting from the site.	<ul style="list-style-type: none"> Predicted site-related noise Number of off-site receptors potentially affected (residential properties, public facilities, businesses, and institutions) 		Very Important	
					Important	
					Less Important	
					Not Important	
	Odour	Continued operation of the waste disposal facility may result in changes in the degree and frequency of odours from the site	<ul style="list-style-type: none"> Predicted odour emissions Number of off-site receptors potentially affected (residential properties, public facilities, businesses, and institutions) 		Very Important	
					Important	
					Less Important	
					Not Important	
Geology and Hydrogeology	Groundwater quality	Contaminants associated with waste disposal sites have the potential to enter the groundwater and impact off-site groundwater or surface water.	<ul style="list-style-type: none"> Predicted effects to groundwater quality at property boundaries and off-site 		Very Important	
					Important	
					Less Important	
					Not Important	
Surface Water Resources	Surface water quality	Contaminants associated with waste disposal sites have the potential to seep or runoff into surface water.	<ul style="list-style-type: none"> Predicted effects on surface water quality on-site and off-site 		Very Important	
					Important	
					Less Important	
					Not Important	
	Surface water quantity	The construction of physical works may disrupt natural surface drainage patterns and may alter runoff and peak flows. The presence of the facility may also affect base flow to surface water.	<ul style="list-style-type: none"> Change in drainage areas Predicted occurrence and degree of off-site effects 		Very Important	
					Important	
					Less Important	
					Not Important	
Terrestrial Environment	Terrestrial ecosystems	Waste disposal facility construction and operations may remove or disturb the functioning of natural terrestrial habitats and vegetation, including rare, threatened or endangered species.	<ul style="list-style-type: none"> Predicted impact on vegetation communities due to project Predicted impact on wildlife habitat due to project Predicted impact of project on vegetation and wildlife including rare, threatened or endangered species 		Very Important	
					Important	
					Less Important	
					Not Important	



Component	Sub-component	Rationale	Indicators	Possible Additional Indicators	Criteria Rating	Rationale
Environmental Criteria – Natural Environment						
Aquatic Environment	Aquatic ecosystems	Waste disposal facility construction and operations may remove or disturb the functioning of natural aquatic habitats and species, including rare, threatened or endangered species.	<ul style="list-style-type: none"> Predicted changes in water quality Predicted impact on aquatic habitat due to project Predicted impact on aquatic biota due to project 		Very Important Important Less Important Not Important	
Environmental Criteria – Human Environment						
Archaeology and Cultural Heritage	Cultural and heritage resources	Cultural/heritage resources could be displaced by the construction of waste disposal facility components. The use and enjoyment of cultural resources may also be disturbed by the ongoing facility operation.	<ul style="list-style-type: none"> Cultural and heritage resources on-site and in vicinity Predicted impacts to cultural and heritage resources on-site and in vicinity 		Very Important Important Less Important Not Important	
	Archaeological resources	Archaeological resources are non-renewable cultural resources that can be destroyed by the construction and operation of a waste disposal facility.	<ul style="list-style-type: none"> Presence of archaeological resources on-site Significance of on-site archaeology resources potentially displaced/disturbed 		Very Important Important Less Important Not Important	
Transportation	Effects on airport operations	There is the potential for bird strikes for aircraft using Tyendingaga Mohawk airport and the private airfield located on Lots 14 and 15 Concession III.	<ul style="list-style-type: none"> Bird strike hazard to aircraft in Local Study Area 		Very Important Important Less Important Not Important	
	Effects from truck transportation along access roads	Truck traffic associated with the landfill may adversely affect residents, business, institutions and movement of farm vehicles in the site vicinity.	<ul style="list-style-type: none"> Potential for traffic collisions Disturbance to traffic operations Proposed road improvement requirements 		Very Important Important Less Important Not Important	
Land Use	Effects on current and planned future land uses	The facilities may not be fully compatible with certain current and/or planned future land uses. Current land uses (e.g., agriculture) may be displaced by facility development. Waste disposal facilities can potentially affect the use and enjoyment of recreational resources in the vicinity of the site.	<ul style="list-style-type: none"> Current land use Planned future land use Type(s) and proximity of off-site recreational resources within 500 m of landfill footprint potentially affected Type(s) and proximity of off-site sensitive land uses (i.e. dwellings, churches, cemeteries, parks) within 500 m of landfill footprint potentially affected 		Very Important Important Less Important Not Important	
	Displacement of agricultural land	Agricultural land will be displaced by the development of the facility if the facility is located away from the lands currently designated to accommodate waste management facilities.	<ul style="list-style-type: none"> Current land use Predicted impacts on surrounding agricultural operations Type(s) and proximity agricultural operations (i.e. organic, cash crop, livestock) 		Very Important Important Less Important Not Important	



Component	Sub-component	Rationale	Indicators	Possible Additional Indicators	Criteria Rating	Rationale
Environmental Criteria – Human Environment						
Economic	Effects on the cost of services to customers	The costs of continued operation of a waste disposal facility will affect the price of tipping fees, subsequently affecting the cost of service to customers. The greater the air space achieved for a lower capital cost will enable a lower cost of services to be provided.	<ul style="list-style-type: none"> Ratio of air space achieved to volume of soil to be excavated and area of cell base and leachate collection system to be constructed 		Very Important Important Less Important Not Important	
	Continued service to customers	The Napanee landfill site will provide an important and affordable service to its users, particularly in the east end of Ottawa.	<ul style="list-style-type: none"> Total optimized site capacity and site life 		Very Important Important Less Important Not Important	
	Economic benefit to local municipality	The continued use of the facility will provide economic benefits to the local community in the form of new employment opportunities in both the construction and day-to-day operation. This also has the potential for increased employment opportunities in local firms supplying products or services directly, or as secondary suppliers.	<ul style="list-style-type: none"> Employment at site (number and duration) Opportunities to provide products or services 		Very Important Important Less Important Not Important	
Social	Visual impact of the facility	The contours of a waste disposal facility can affect the visual appeal of a landscape.	<ul style="list-style-type: none"> Predicted changes in landscapes and views 		Very Important Important Less Important Not Important	
	Recreational Facilities	Waste disposal facilities can potentially affect the use and enjoyment of recreational resources in the vicinity of the site	<ul style="list-style-type: none"> Type(s) and proximity of off-site recreational resources within 500 m of landfill footprint potentially affected 		Very Important Important Less Important Not Important	
Aboriginal	Potential effects on aboriginal communities	The facility construction and operations may adversely affect local aboriginal communities.	<ul style="list-style-type: none"> Potential effects on use of lands for traditional purposes 		Very Important Important Less Important Not Important	
Technical Criteria						
Site Design and Operations	Site design and operations characteristics	The characteristics of the existing and proposed site design and engineered system requirements will affect site activities and operational and maintenance requirements.	<ul style="list-style-type: none"> Complexity of site infrastructure Operational flexibility Interaction with existing site infrastructure Soil management requirements 		Very Important	
					Important	
					Less Important	
					Not Important	





Appendix C.3.2

Handouts

- Attendance Sheet
- Copies of OH#1 Display Boards (see Appendix A.3.1)
- Launch packages (see Appendix A.2.3)
- Blank copies of the Workbook (see Appendix C.3.1)





ATTENDANCE LIST

	<i>Name (Last, First)</i>	<i>Address</i>	<i>Postal Code</i>	<i>Phone Number</i>	<i>Email</i>
1					
2					
3					
4					
5					
6					
7					
8					
9					
10					
11					
12					
13					
14					

