



Appendix D  
**Open House #2 – Consultation Report and Materials**







## Introduction

This appendix describes Open House (OH) #2 held on April 14, 2010 at The Smiling Wilderness Family Restaurant & Palace Village, 824 Palace Road in Napanee, Ontario.

Appendix D.1 contains the OH #2 Consultation Report, which provides an overview of the event. Appendix D.2 contains OH #2 Notification Materials including newsletters, newspaper advertisements and media releases, agency correspondence, public stakeholder correspondence. Appendix D.3 contains the OH #2 Materials including the display information and handouts.







## Appendix D.1 OH#2 Consultation Report







Terms of Reference for a New Landfill Footprint  
Open House #2 Consultation Report

**Open House #2 Consultation Report**

**April 14, 2010**

**New Landfill Footprint**  
**Beechwood Road Environmental Centre**

Open House # 2 was held at the Smiling Wilderness Family Restaurant in Napanee on April 14, 2010 from 2 p.m. to 9 p.m. Approximately 20 people attended. Most of the attendees had not attended previous consultation events. Seven WM staff and consultants were in attendance to answer questions and discuss issues with attendees.

The primary purpose of this Open House was to provide an update on the status of the project, to present a summary of comments and input received from the public during previous consultation events, and to provide another opportunity for the public to discuss the project and provide input on evaluation criteria and any other topic.

Twenty display boards were presented as shown in Appendix D.3.

There were many comments on the BREC project being well thought out and a good opportunity for the community. Issues like hydrogeology and air were discussed frequently. Attendees were invited to provide input on the relative importance of environmental components. Atmosphere, geology and hydrogeology, surface water, transportation, biology and site design and operations factors were generally identified as important criteria.

There were two lengthy discussions about the importance of preserving cultural heritage features, including the Empey Hill Church, the Winter farm buildings, the Martin cemetery and the old school house on Johnson Sideroad, and the wood rail fences along Beechwood Road, Johnson Side Road and Selby Road. Ways to preserve these features were discussed.

There was a discussion with a local businessman who expressed his support for the project because if successful, BREC would lower his cost of waste disposal and eliminate the need for him to dispose waste by shipping it somewhere else.





## Terms of Reference for a New Landfill Footprint Open House #2 Consultation Report

There were lengthy discussions with a member of the public who was opposed to the project. There were discussions about protection of groundwater from both the old and proposed new landfill footprint. The pros and cons of sending wastes for disposal in the United States were also discussed. There was a discussion about transportation and how this would be studied in the EA. WM answered questions about whether the Terms of Reference would be “scoped” and what would be included in the EA studies. WM answered that the “Needs” and “Alternative To” assessments would be scoped out of the EA; however, these were the only components of a full EA that would be scoped out. In fact, WM is proposing to include additional assessments that are not required in an Ontario EA, such as cumulative effects assessment. The proposed assessment that is being considered would look at potential effects of other projects that would occur in the vicinity of the proposed new landfill footprint within the same time periods.

For example, the potential effects of truck traffic from a new landfill footprint would be considered in the EA as well as the cumulative effects of truck traffic from other projects such as diversion activities at BREC. A similar approach would apply to the assessment of other potential adverse effects.

People living near Lake Ontario asked about leachate leaking into the lake. There was a discussion on ground water flow and the results of ongoing monitoring programs at the landfill, which indicate that the landfill is operating safely and leachate is not entering Lake Ontario, in fact the monitoring program shows that it is not leaving the site. There was a discussion about the new landfill footprint and the safeguards that would be put in place (such as liners and leachate collection systems) to ensure that leachate does not leave the site.







## **Appendix D.2 Open House #2 Notification Materials**







Terms of Reference for a New Landfill Footprint  
Consultation Record

**Appendix D.2.1      Advertisements and Media Releases**  
- Notice







## **Notice of Open House #2 Terms of Reference for a New Landfill Footprint**

You are invited to attend an Open House, which will be held at the Smiling Wilderness Family Restaurant and Palace Village, 824 Palace Road, Napanee, Ontario on April 14, 2010 from 2:00 p.m. to 9:00 p.m.

### **What is Being Proposed?**

Waste Management of Canada Corporation (WM), owners and operators of the existing Richmond Landfill Facility in Napanee, have initiated an Environmental Assessment (EA) seeking approval for a new landfill footprint at WM's Napanee site. The new landfill footprint will be one component of the proposed Beechwood Road Environmental Centre (BREC). The proposed BREC will be an integrated waste management facility that will include:

- Waste diversion and recycling operations;
- Composting operations;
- Renewable energy facilities;
- Recreational lands for community uses; and,
- A new landfill footprint for disposal of residual waste materials.

### **Progress to Date**

An Open House was held on March 10<sup>th</sup> introducing the project; describing the EA process, consultation activities and opportunities for the public to become involved in the EA planning process. On March 25<sup>th</sup> a workshop was held to discuss and receive comments on WM's business analysis that led to the conclusion that there was a need for a new landfill footprint at Napanee, alternatives to a new landfill that were considered, a discussion and input from participants regarding the identification of envelopes or areas on property owned or optioned by WM where a new landfill footprint could be located, and identification of environmental components and evaluation criteria that would be used in assessment of effects and comparison of alternatives that will occur during the EA study process.

### **At this Open House**

There will be a summary of information received from the previous consultation events and how this input is being incorporated into the Terms of Reference (TOR), which is currently being prepared. The ToR sets out the framework and work plan for addressing the requirements of Ontario's *Environmental Assessment Act* when preparing the EA, including such things as the alternatives that will be considered and the public consultation activities. If approved by the Minister of Environment, the ToR provides the framework and requirements for the preparation of the EA. The draft contents of the TOR will be summarized including an overview of existing environmental conditions, proposed work plans for the EA, the consultation process to be used in the EA and a description of the next steps in the process.

**Want to Get Involved?**

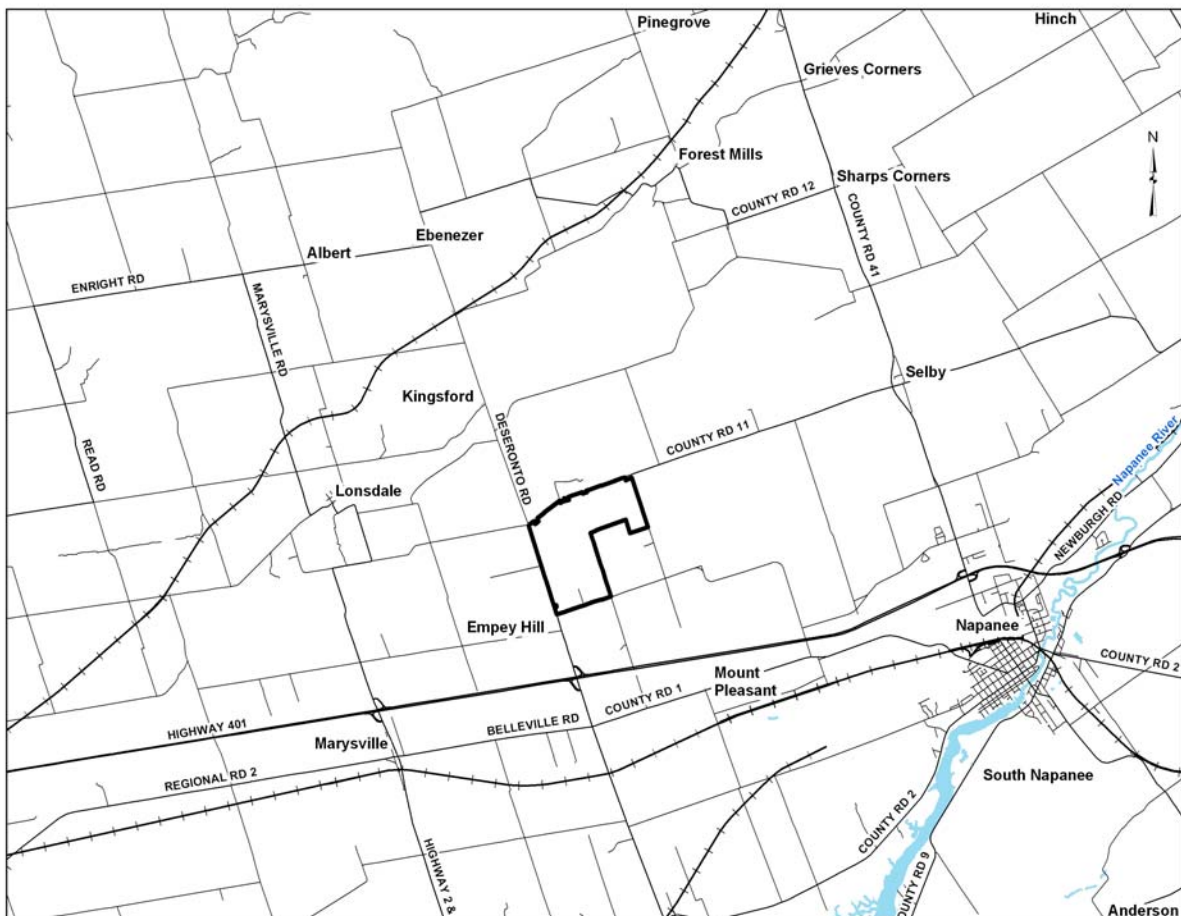
Members of the public, agencies and other interested persons are encouraged to actively participate in the planning process by attending consultation events or contacting WM staff directly with comments or questions. Consultation opportunities will continue to be advertised in local newspapers, on our project website (<http://brec.wm.com>) and by direct and/or electronic mail. We will also receive your comments on our project information line at (613) 354-1060. To find out more about the project please contact:

**Randy Harris**  
**Site Manager**  
Waste Management of Canada  
Richmond Landfill  
Napanee, K7R 3L1  
Telephone: 613-354-1060  
E-mail: [rharris@wm.com](mailto:rharris@wm.com)

**Linda Cooper**  
**Community Relations Representative**  
Waste Management of Canada  
Richmond Landfill  
Napanee, K7R 3L1  
Telephone: 613-354-1060  
E-mail: [lcooper1@wm.com](mailto:lcooper1@wm.com)

*Under the Freedom of Information and Protection of Privacy Act and the EAA, unless otherwise stated in the submission, any personal information such as name, address, telephone number and property location included in a submission will become part of the public record files for this matter and will be released, if requested, to any person.*

***Get Involved....Have Your Say!***





### **Appendix D.2.2 Notification Letters**

- Invitation Letter to the Second Open House Sent to Members of the Government Review Team (GRT)
- Invitation Letter to the Second Open House Sent to Members of the GRT(FN Related)
- Invitation Letter to the Second Open House Sent to First Nation Communities
- Contact List for April 5 Letter
- Correspondence (letters/emails received)







**Invitation Letter to the Second Open House Sent to Members of the GRT  
(see Table OH2-1 for list of GRT Members that invitation letters were sent to)**



WASTE MANAGEMENT  
OF CANADA CORPORATION  
R.R. #6  
1271 Beechwood Road  
Napanea, ON K7R 3L1

(613) 388-1057  
(613) 388-2785 Fax

April 5, 2010

Name of the GRT member  
Position  
Name of the Government Agency & Department  
Address  
City, Province, Postal Code

Dear Mr./Ms. \_\_\_\_\_:

**RE: Waste Management of Canada Corporation, Beechwood Road Environmental Centre (BREC), Environmental Assessment New Landfill Footprint**

Further to our letters dated March 5, 2010 and March 22, 2010, we are writing to inform you of our progress on development of a Terms of Reference (TOR) for a new landfill footprint at our Beechwood Road Environmental Centre (BREC) located in the Town of Greater Napanea.

Our first Open House took place on March 10, 2010 and a Workshop on alternatives and evaluation criteria took place March 25, 2010. We regret that you were unable to attend these consultation events. However, there will be multiple future opportunities for you to participate and provide your input towards the development of our project. For example, a copy of the workbook distributed to participants at the Workshop is available on the project website. If you wish, you can download it and provide input to the questions in the workbook and return it to us at the address above.

Our next public consultation event is a second Open House, which will take place Wednesday April 14, 2010 at The Smiling Wilderness Family Restaurant & Palace Village, 824 Palace Road, Napanea, Ontario from 2:00 p.m. to 9:00 p.m. We hope that you will be able to participate in this Open House. In the coming weeks, we will be hosting other consultation events and advancing the development of the proposal. We will keep you up to date on new developments.

In the meantime, please do not hesitate to ask any questions you might have. For further information, please visit our website at <http://brec.wm.com> or contact us at the address on this letter, phone or email [tmurphy3@wm.com](mailto:tmurphy3@wm.com).

Yours truly,

A handwritten signature in black ink, appearing to be 'Tim Murphy'.

Tim Murphy, MCIP, RPP  
Waste Management of Canada Corporation

cc: Ted O'Neill, Golder Associates

**Invitation Letter to the Second Open House Sent to Members of the GRT (FN Related)**  
**(see Table OH2-1 for list of FN Related-GRT Members that invitation letters were sent to)**



WASTE MANAGEMENT  
OF CANADA CORPORATION  
R.R. #6  
1271 Beechwood Road  
Napanee, ON K7R 3L1

(613) 388-1057  
(613) 388-2785 Fax

April 5, 2010

Name of the GRT Member  
Position  
Name of the Government Agency & Department  
Address  
City, Province, Postal Code

Dear Mr./Ms. \_\_\_\_\_:

**RE: Waste Management of Canada Corporation, Beechwood Road Environmental Centre (BREC), Environmental Assessment New Landfill Footprint**

Further to our letters dated March 5, 2010 and March 22, 2010, we are writing to inform you of our progress on development of a Terms of Reference (TOR) for a new landfill footprint at our Beechwood Road Environmental Centre (BREC) located in the Town of Greater Napanee.

Our first Open House took place on March 10, 2010 and a Workshop on alternatives and evaluation criteria took place March 25, 2010. We regret that you were unable to attend these consultation events. However, there will be multiple future opportunities for you to participate and provide your input towards the development of our project. For example, a copy of the workbook distributed to participants at the Workshop is available on the project website. If you wish, you can download it and provide input to the questions in the workbook and return it to us at the address above.

Our next public consultation event is a second Open House, which will take place Wednesday April 14, 2010 at The Smiling Wilderness Family Restaurant & Palace Village, 824 Palace Road, Napanee, Ontario from 2:00 p.m. to 9:00 p.m. We hope that you will be able to participate in this Open House. In the coming weeks, we will be hosting other consultation events and advancing the development of the proposal. We will keep you up to date on new developments.

In the meantime, please do not hesitate to ask any questions you might have. For further information, please visit our website at <http://brec.wm.com> or contact us at the address on this letter, phone or email [tmurphy3@wm.com](mailto:tmurphy3@wm.com).

Yours truly,

A handwritten signature in black ink, appearing to read 'Tim Murphy', written in a cursive style.

Tim Murphy, MCIP, RPP  
Waste Management of Canada Corporation

cc: Ted O'Neill, Golder Associates Ltd.

**Invitation Letter to the Second Open House Sent to First Nation Communities  
(see Table OH2-1 for list of First Nation communities that invitation letters were sent to)**



**WASTE MANAGEMENT  
OF CANADA CORPORATION**

R.R. #6  
1271 Beechwood Road  
Napanea, ON K7R 3L1  
(613) 388-1057  
(613) 388-2785 Fax

April 5, 2010

Name of the Chief  
Name of the First Nation Group  
Address  
City, Province, Postal Code

Dear Mr./Ms. \_\_\_\_\_:

**RE: Waste Management of Canada Corporation, Beechwood Road Environmental Centre (BREC), Environmental Assessment New Landfill Footprint**

Further to our letters of March 5, 2010 and March 22, 2010, we are writing to inform you of our progress on development of a Terms of Reference (TOR) for a new landfill footprint at our Beechwood Road Environmental Centre (BREC) located in the Town of Greater Napanea.

Our first Open House took place on March 10, 2010 and a Workshop on alternatives and evaluation criteria took place March 25, 2010. We regret that you were unable to attend these consultation events. However, there will be multiple future opportunities for you to participate and provide your input towards the development of our project. For example, a copy of the workbook distributed to participants at the Workshop is available on the project website. If you wish, you can download it and provide input to the questions in the workbook and return it to us at the address above.

Our next public consultation event is a second Open House, which will take place Wednesday April 14, 2010 at The Smiling Wilderness Family Restaurant & Palace Village, 824 Palace Road, Napanea, Ontario from 2:00 p.m. to 9:00 p.m. We hope that you will be able to participate in this Open House. In the coming weeks, we will be hosting other consultation events and advancing the development of the proposal.

Consultation with First Nations communities is an important element of the Environmental Assessment process. Should you or your council wish to become involved in the EA process or discuss the project, we would be pleased to work with you at another venue to develop and carry out separate events specifically designed to engage your community in meaningful discussions concerning the project. Contact me if you would like to develop a separate consultation event(s).

Please let us know if you are interested in engaging in discussions and providing input to our project. We will keep you up to date on new developments. Please do not hesitate to ask any questions. For further information, please visit our website at <http://brec.wm.com> or contact us at the address on this letter, phone or email [tmurphy3@wm.com](mailto:tmurphy3@wm.com).

Yours truly,

Tim Murphy, MCIP, RPP  
Waste Management of Canada Corporation

cc: Ted O'Neill, Golder Associates Ltd.

**Table OH2-1: Contact List for Open House #2 Invitation Letters sent April 5, 2010**

	Name, Position, Agency and Address	Document Form	Phone, fax, and e-mail	Types of EA Projects to be Circulated
<b>PROVINCIAL AGENCIES &amp; MINISTRIES</b>				
<b>Ontario Power Generation</b>				
1.	Mr. Steve Hounsell, Senior Advisor, Sustainable Development Ontario Power Generation 700 University Ave. Toronto ON M5G 1X6	1 hard copy	T: (416) 592-2766 F: (416) 592-7097 steve.hounsell@opg.com	Projects within 2 km of an OPG generating site or that could potentially directly impact any Ontario Power Generation generating site. If unsure, contact OPG before sending documents.
2.	<b>Quinte Conservation</b> 2061 Old Highway 2, R. R. #2, Belleville ON Canada K8N 4Z2		T613-968-3434 F613-968-8240	
<b>Ministry of Aboriginal Affairs (MMA)</b>				
3.	Pam Wheaton, Director Aboriginal & Ministry Relationships Branch Ministry of Aboriginal Affairs 720 Bay Street, 4th Floor Toronto ON M5G 2K1	1 hard copy	T: (416) 326-4053 F: (416) 326-4017 Pam.Wheaton@Ontario.ca	Any projects meeting either of following criteria: - potentially affecting first Nation Communities where land claims or litigation are involved. - potentially affecting Crown land and resources usage.
4.	<b>Technical Contact (same office):</b> Francois Lachance Senior Policy Advisor		T: (416) 326-4754 francois.lachance@ontario.ca	
<b>Ministry of Agriculture Food and Rural Affairs</b>				
5.	Mr. David Cooper, Manager Environmental & Land Use Policy Ministry of Agriculture, Food and Rural Affairs 1 Stone Road W, 3 <sup>rd</sup> Floor Guelph ON N1G 4Y2	1 hard copy of Parent Class EAs or province-wide documents.	T: (519) 826-3117 F: (519) 826-3109 <a href="mailto:david.cooper@ontario.ca">david.cooper@ontario.ca</a>	All Parent Class EAs and exemptions or activities of a province-wide application affecting agricultural operations, specialty crop soils or Class 1-3 Agricultural land. Individual EAs and Class EAs affecting agricultural operations, specialty crop soils and Classes 1-3 Agricultural lands, except in urban designations, and all waste EAs

**Table OH2-1: Contact List for Open House #2 Invitation Letters sent April 5, 2010**

	Name, Position, Agency and Address	Document Form	Phone, fax, and e-mail	Types of EA Projects to be Circulated
6.	Mr. Ray Valaitis, Rural Planner Central and North Region Ontario Ministry of Agriculture, Food and Rural Affairs RR #3, 95 Dundas Street, Brighton ON 0K 1H0	1 hard copy	Phone: 613-475-4764 Fax: 613-475-3835 ray.valaitis@ontario.ca	Projects meeting above criteria in North Region, which covers upper-tier municipalities of Muskoka and Nipissing northward. Central Region covers municipalities of Toronto, York, and Simcoe east to Hastings and Lennox & Addington including Peterborough area.
<b>Ministry of Energy and Infrastructure</b>				
7.	<b>Alan Jenkins</b> <b>Sr. Policy Specialist</b> Energy Supply and Competition Branch Ministry of Energy and Infrastructure 880 Bay Street 3 <sup>rd</sup> floor Toronto, ON, M7A 2C1	1 hard copy	T: 416-325-6926 F: 416-325-6972 Allan.jenkins@ontario.ca	Parent class EAs Individual and Class EA with energy implications or energy-related (including landfill gas)
8.	<b>Kevin Pal</b> <b>Manager</b> Strategic Policy Branch Ministry of Energy and Infrastructure 880 Bay Street 6 <sup>th</sup> floor Toronto, ON, M7A 2C1	1 hard copy	T: 416-327-7204 F: 416-327-7204 Kevin.pal@ontario.ca	All parent, individual and class EAs
9.	<b>Ms. Tija Dirks, Director</b> Growth Policy, Planning and Analysis Ontario Growth Secretariat Ministry of Energy and Infrastructure 777 Bay Street 4 <sup>th</sup> floor Toronto, ON, M5G 2E5	1 hard copy	416-325-1546 F 416-325-7403 Tija.dirks@ontario.ca	Contact to see if they have an interest in the EA
<b>Ministry of Culture</b>				
10.	Ms. Karla Barboza, Heritage Adviser Culture Services Unit Programs and Services Branch Ministry of Culture 400 University Avenue, 4th Floor Toronto ON M7A 2R9	1 hard copy	T: (416) 314-7120 F: (416) 314-7790 <a href="mailto:karla.barboza@mci.gov.on.ca">karla.barboza@mci.gov.on.ca</a>	Send all province-wide or general EA initiatives (i.e. Parent Class EAs) for comment and coordination on general heritage impact.

**Table OH2-1: Contact List for Open House #2 Invitation Letters sent April 5, 2010**

	<b>Name, Position, Agency and Address</b>	<b>Document Form</b>	<b>Phone, fax, and e-mail</b>	<b>Types of EA Projects to be Circulated</b>
11.	Mr. Chris Andersen, Heritage Planner Cultural Services Unit, Programs and Services Branch Ministry of Culture, 400 University Ave. 4th Floor Toronto ON M7A 2R9	1 hard copy	T: (416) 314-7159 F: (416) 212-1802 <a href="mailto:Chris.andersen@ontario.ca">Chris.andersen@ontario.ca</a>	All individual and Class EAs in Eastern and Northeastern Ontario – Eastern Ontario covers upper- and single-tier municipalities from Quinte West, Hastings and Renfrew eastward to Quebec; incl. Ottawa and Kingston areas. Northeastern Ontario covers. Parry Sound, Sudbury, Nipissing, Timiskaming, Cochrane, Algoma and Manitoulin.
12.	Ms. Mary Beach, Manager East Region Ministries of Citizenship and Immigration, Culture, Tourism and Health Promotion 347 Preston Street, 4 <sup>th</sup> Floor Ottawa ON K1S 6B7	1 hard copy	T: (613) 742-3366 F: (613) 742-5300 mary.beach@ontario.ca	All individual and Class EAs in East Region which covers upper- and single-tier municipalities of Northumberland, Kawartha Lakes, and Haliburton eastward including Ottawa, Kingston and Peterborough areas.
<b>Ministry of Tourism</b>				
13.	Mr. Darryl Soshynski, Manager Strategic & Corporate Policy Unit Tourism Policy and Research Branch Ministry of Tourism 15th Floor, 700 Bay Street Toronto ON M7A 2E1	1 hard copy	T: (416) 212-1676 F: (416) 314-7341 Darryl.soshynski@ontario.ca	All Parent Class EAs and individual and Class EAs of province-wide or high-level of significance (e.g. inter-provincial bridges).
14.	Mr. Gerry Webber, Coordinator Resource-based Tourism Unit Tourism Policy and Research Branch Ministry of Tourism Suite 401, 199 Larch Street Sudbury ON P3E 6A5	Prefers Electronic	T: 705-564-3175 F: 705-677-4019 Gerry.webber@ontario.ca	All Parent Class EAs and Class EAs and individual EAs of province-wide or high-level of significance (e.g. inter-provincial bridges).
<b>Ministry of Health Promotion</b>				
15.	Mr. Craig Stewart, Manager Recreation Unit Sports and Recreation Branch Ministry of Health Promotion 18 <sup>th</sup> Floor, 393 University Avenue Toronto ON M7A 2S1	1 hard copy	Craig.stewart@ontario.ca	All Parent Class EAs if they may have implications for recreational use of land.

**Table OH2-1: Contact List for Open House #2 Invitation Letters sent April 5, 2010**

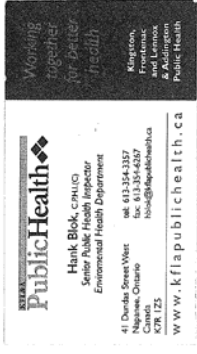
	<b>Name, Position, Agency and Address</b>	<b>Document Form</b>	<b>Phone, fax, and e-mail</b>	<b>Types of EA Projects to be Circulated</b>
	<b>Ministry of Education</b>			
16.	Mr. Steven Mitchell, O.A.A., Architect Pupil Accommodation Unit Business Services Branch Ministry of Education 21st Floor, Mowat Block, 900 Bay Street Toronto ON M7A 1L2	1 hard copy	T: (416) 325-2015 F: (416) 325-4024 Steven.mitchell@ontario.ca	All Parent Class EAs or province-wide EA matters..
17.	<b><u>Algonquin Lakeshore Catholic District School Board</u></b>  Michael Schmitt Director of Education 613-354-6257xt. 448 schmitt@alcdsb.on.ca 151 Dairy Avenue, Napanee, Ontario, K7R 4B2			
18.	<b><u>Limestone District School Board</u></b> Helen Chadwick Chair 220 Portsmouth Ave Kingston, ON K7L 4X4		613-544-6920 <a href="mailto:inq@limestone.on.ca">inq@limestone.on.ca</a>	
19.	<b>HasTINGS / Prince Edward County District School Board</b> Mike Brant P.O. Box 66, 70 Shannonville Road Tyendinaga Mohawk Territory, ON K0K 3A0 Electoral area: Tyendinaga / Mohawk Territory		Phone: +1 613 962-3595 Email: mbrant@hpedsb.on.ca	
20.	HasTINGS/Prince Edward District School Board 156 Ann St. Belleville, ON K8N 1N9			

**Table OH2-1: Contact List for Open House #2 Invitation Letters sent April 5, 2010**

	<b>Name, Position, Agency and Address</b>	<b>Document Form</b>	<b>Phone, fax, and e-mail</b>	<b>Types of EA Projects to be Circulated</b>
	<b>Ministry of Health and Long-Term Care</b>			
21.	Sylvia Shedden Director, Environmental Health Branch Public Health Division 2nd Floor, 5700 Yonge St Toronto ON M2M 4K5	Hard copy of EA summary and map	T: (416) 327-7426 F: (416) 327-0984 Sylvia.shedden@moh.gov.on.ca	Send summary of EA and map for sewage and water-works, and for waste facility projects which may have health implications.
22.	Dr. Ian Gemmill Medical Officer of Health Kingston, Frontenac and Lennox & Addington Health Unit		221 Portsmouth Avenue, Kingston, ON K7M 1V5	
23.	Medical Officer of Health: Dr. Richard Schabas <b>Hastings &amp; Prince Edward Counties Health Unit</b> 179 North Park Street Belleville, ON K8P 4P1 <a href="http://www.hpechu.on.ca/">Web: http://www.hpechu.on.ca/</a>		Tel: (613) 966-5500 Fax: (613) 966-9418	
24.	Board of Health Chair: Ron Hamilton <b>Hastings &amp; Prince Edward Countie Health Unit</b> 179 North Park Street Belleville, ON K8P 4P1		Tel: (613) 966-5500 Fax: (613) 966-9418	
25.	Kingston KFL&A Public Health 221 Portsmouth Avenue Kingston, ON K7M 1V5	1 hard copy	Telephone: 613-549-1232 Toll Free: 1-800-267-7875 Fax: 613-549-7896	
26.	Napanee KFL&A Public Health 41 Dundas Street Napanee, ON K7R 1Z5	1 hard copy	Telephone: 613-354-3357 Fax: 613-354-6267	



**Table OH2-1: Contact List for Open House #2 Invitation Letters sent April 5, 2010**

	<b>Name, Position, Agency and Address</b>	<b>Document Form</b>	<b>Phone, fax, and e-mail</b>	<b>Types of EA Projects to be Circulated</b>
27.	Dr. Ian Gammill Medical Officer of Health KFL&A Health Unit 221 Portsmouth Ave Kingston, Ontario K7M 1V5			
28.	Hank Blok C.P.H.I.(C) Senior Public Health Inspector 41 Dundas Street West Napancee Ontario K7R 1Z5	1 hard copy	hblok@kflapublichealth.ca	
<b>Ministry of Municipal Affairs and Housing</b>				
29.	Petersen, Ken Planning Innovation Section Provincial Planning Policy Branch Ministry of Municipal Affairs & Housing 777 Bay Street, 14th Floor Toronto ON M5G 2E5		Ken.Petersen@ontario.ca	
30.	Mr. Michael Elms, Manager Eastern Municipal Services Office Ministry of Municipal Affairs & Housing Community Planning and Development 8 Estate Lane, Rockwood House Kingston ON K7M 9A8	1 hard copy	T: (613) 545-2132 F: (613) 548-6822 <a href="mailto:Michael.elms@ontario.ca">Michael.elms@ontario.ca</a>	Projects meeting above criteria in upper- and single-tier municipalities of Hastings and Renfrew eastward including the Ottawa and Kingston areas
<b>Southern Region</b>				
31.	Peterborough District Ministry of Natural Resources Riverside Drive, P.O. Box 220 Peterborough, ON K8A 6X4 Att: Katie Novacek, District Planner	2 hard copies	T: (705) 755-3294 F: (705) 755-3125 <a href="mailto:Katie.novacek@ontario.ca">Katie.novacek@ontario.ca</a>	All individual or Class EAs in District which covers upper- and single-tier municipalities Prince Edward County, Kawartha Lakes, Northumberland and the southern halves of Peterborough, Hastings, Lennox and Addington and Frontenac.
<b>Government Review Team List for Aboriginal Information</b>				

**Table OH2-1: Contact List for Open House #2 Invitation Letters sent April 5, 2010**

	<b>Name, Position, Agency and Address</b>	<b>Document Form</b>	<b>Phone, fax, and e-mail</b>	<b>Types of EA Projects to be Circulated</b>
1.	Mr. Fred Hosking Senior Claims Analyst Specific Claims Branch Ontario Research Team Department of Indian and Northern Affairs 10 Wellington St., Room 1310 Gatineau QU K1A 0H4	Government Input	T: (819) 953-1940 F: (819) 997-9873 hoskingf@inac.gc.ca	<b>DO NOT</b> send entire EA document. Send map and legal description of the undertaking. Contacts will provide input on federal specific claims.  <b>Specific Claims Map updated quarterly</b> <b>Specific Claims Information</b>
2.	Pam Wheaton, Director Aboriginal & Ministry Relationships Branch, Ministry of Aboriginal Affairs 720 Bay Street, 4th Floor Toronto ON M5G 2K1	1 hard copy	T: (416) 326-4053 F: (416) 326-4017 Pam.Wheaton@Ontario.ca	Any projects meeting either of following criteria: - potentially affecting first Nation Communities where land claims or litigation are involved. - potentially affecting Crown land and resources usage.
3.	<b>Technical Contact (same office):</b> Francois Lachance Senior Policy Advisor		T: (416) 326-4754 francois.lachance@ontario.ca	
4.	Josee Beauregard Litigation Team Leader Eastern Litigation Directorate Ontario/ Nunavut Team Indian and Northern Affairs Litigation Management and Resolution Branch 25 Eddy Street Gatineau, Quebec K1A 0H4			<b>DO NOT</b> send entire EA document. Send map and legal description of the undertaking.  Contacts will provide input on federal litigation.
5.	Mr. Gregg Dahl Senior Policy Analyst Office of the Federal Interlocutor for Métis and non-status Indians 66 Slater Street - Room 1218 Ottawa ON K1A 0H4	Government Input	T: (613) 992-3705 F: (613) 996-1737 dahlg@inac.gc.ca	<b>DO NOT</b> send entire EA document. Send map and legal description of the undertaking

**Table OH2-1: Contact List for Open House #2 Invitation Letters sent April 5, 2010**

	<b>Name, Position, Agency and Address</b>	<b>Document Form</b>	<b>Phone, fax, and e-mail</b>	<b>Types of EA Projects to be Circulated</b>
6.	Meish Podlog Senior Negotiator Ministry of Aboriginal Affairs 160 Bloor St. E, Suite 400 Toronto, ON M7A 2E1	Ontario project manager for the Algonquin claim negotiations	tel: 416-326-4775 fax: 416-326-4017	
1.	Alderville First Nation P. O. Box 46, R.R. #4 ROSENEATH, Ontario KOK 2X0 Chief James R. Marsden	1 hard copy	Ph: (905) 352-2011  Fax: (905) 352-3242 jbmarsden@eagle.ca	Ogemawahj
2.	Algonquins of Pikwakanagan First Nation P.O. Box 100 Pikwakanagan, GOLDEN LAKE, Ontario K0J 1X0	1 hard copy	Chief Kirby Whiteduck Ph: (613) 625-2800 Fax: (613) 625-1149 chiefcouncil@pikwakanagan.ca	N/A
3.	Chippewas of Mnjikaning (Rama) 5884 Rama Rd. Suite 200 RAMA, ON L0K 1T0  Fred Jahn Director of Facilities and Operations Chippewas of Rama First Nation  5884 Rama Rd. Suite 200 RAMA, ON L0K 1T0	1 hard copy	Chief Sharon Stinson Henry Ph: (705) 325-3611 Fax: (705) 325-0879 chief@mnjikaning.ca  Fred Jahn Ph: (705) 325-3611 x 1540 Fax: (705) 325-0879Fred.jahn@ramafirstnation.ca a	Ogemawahj

**Table OH2-1: Contact List for Open House #2 Invitation Letters sent April 5, 2010**

	<b>Name, Position, Agency and Address</b>	<b>Document Form</b>	<b>Phone, fax, and e-mail</b>	<b>Types of EA Projects to be Circulated</b>
4.	Curve Lake First Nation 22 Winookeeda Road CURVE LAKE, ON KOL 1R0	1 hard copy	Chief Keith Knott Ph: (705) 657-8045 Fax: (705) 657-8708 tiffany@curvelakefn.ca	N/A
5.	Hiawatha First Nation 123 Paudash Street R. R. #2 KEENE, ON KOL 2G0	1 hard copy	Chief Laurie Carr Ph: (705) 295-4421 Fax: (705) 295-4424 lcarr@hiawathafn.ca	UIC
6.	Mississaugas of Scugog Island 22521 Island Road PORT PERRY, ON L9L 1B6	1 hard copy	Chief Tracy Gauthier Ph: (905) 985-1940 Fax: (905) 985-8828 tgauthier@scugogfirstnation.com	Ogemawahij
7.	Mohawks of the Bay of Quinte 13 Old York Road R. R. #1, DESERONTO, ON KOK 1X0	1 hard copy	Chief R. Donald Maracle Ph: (613) 396-3424 ext. 121 Fax: (613) 396-3627 rdonm@mbq-tmt.org	N/A
8.	Wendat-Huron First Nations 255 Place Chef Michel Laveau Wendake (Québec) G0A 4V0 CANADA		Chief Konrad Stoui administration@cnhw.qc.ca	



# MOHAWKS OF THE BAY OF QUINTE KENHTEKE KANIENKEHA

Administration 13 Old York Rd., Tyendinaga Mohawk Territory, K0K 1X0  
Phone 613-396-3424 Fax 613-396-3627

April 13, 2010

Don Wright, Vice President  
Waste Management of Canada Inc.  
117 Wentworth Court  
Brampton, ON  
L6T 5L4

**Re: Letter dated April 6, 2010**

Dear Mr. Wright,

Thank you for your letter dated April 6, 2010 indicating Waste Management's intentions of inviting residents directly to an information session in the near future.

The Mohawks of the Bay of Quinte are a First Nation who reside on the Tyendinaga Mohawk Territory, a reserve within the meaning of the *Indian Act*. As a result of the Mohawks of the Bay of Quinte status as a reserve, it is subject to the provisions of the Canadian Environmental Assessment Act. Therefore, as a First Nation the Mohawks of the Bay of Quinte is owed a constitutional duty to consult and accommodate by the Government of Ontario. The consultation process established in relation to your proposal for the Beechwood Road Environmental Centre relates to the duty of the proponent, Waste Management, to consult with the general public. It does not meet the standard for the Provincial Government's constitutional duty to consult and accommodate the concerns of the Mohawks of the Bay of Quinte. Discharge of this duty requires consultation on a Government to Government basis with a clear recognition that consultation is not a formality and that the duty to consult calls for **full and informed consent** on our part to any provincial undertaking which has the potential for long-term harm to our reserve.

Your application to expand the Richmond Site under the new name of Beechwood Road Environmental Centre presents complicated technical multi faceted issues that require qualified professional opinions to ensure the public health and safety of our members are addressed. First Nations cannot fully participate in an informed and meaningful way during the EA process without the benefit of professionals with the expertise to fully comprehend the complexities of the proposed application and the potential trans-boundary impacts to the Tyendinaga Mohawk Territory.

Unlike the residents in the surrounding municipalities, the Mohawks of the Bay of Quinte, a First Nation residing on traditional lands cannot simply abandon its reserve and move away should the environment be put at risk. We will therefore be subject to a constant and lasting environmental threat if the proposal is permitted. No cogent evidence has been provided of the need for the services as identified in the Beechwood Road Environmental Centre proposal, other than the commercial interests of the proponent. The Mohawks of the Bay of Quinte cannot and will not permit our interest in the preservation of our land to be sacrificed to the commercial interests of the proponent Waste Management

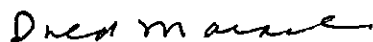
*Tyendinaga, as part of the Mohawk Nation, is a healthy, sustainable Kaniienkeha community, built on and united by our language, culture, traditions, knowledge and history. We exercise our rights and responsibilities for the protection of and respect for our people, our land, our resources and the environment.*

The Tyendinaga Mohawk Council as elected representatives of the community are here to ensure the protection of our lands and our people free from any potential environmental threats occurring on adjacent lands. Please be advised that your proposal to host an information session does not satisfy Ontario's duty to consult and obtain informed consent from the Mohawks of the Bay of Quinte.

The duty to consult and informed consent requires appropriate funding for the Mohawks of the Bay of Quinte to retain qualified experts to review the proposal for the Beechwood Road Environmental Centre. Therefore, is Waste Management prepared to provide the Mohawks of the Bay of Quinte funds needed to engage independent experts for the environmental assessment of your proposed Beechwood Road Environmental Centre? Please provide a written answer to the question.

I trust the following will receive your immediate attention and I look forward to a reply.

Yours truly,



Chief R. Donald Maracle  
Mohawks of the Bay of Quinte

cc Randy Harris, Site Manager, Waste Management  
Honourable Leona Drombrowsky, Minister  
Honourable John Gerretsen, Minister of Environment  
Honourable Dalton McGuinty, Premier of Ontario  
Tyendinaga Mohawk Council  
Brian Hamilton, CAO  
Sue Maracle, Finance



**WASTE MANAGEMENT  
OF CANADA CORPORATION**

117 Wentworth Court  
Brampton, ON L6T 5L4  
(905) 595-3330  
(905) 791-9595 Fax

May 5, 2010

Chief R. Donald Maracle  
Mohawks of the Bay of Quinte  
13 Old York Road,  
Tyendinaga Mohawk Territory  
K0K 1X0

**SENT BY MAIL AND EMAIL TO: [rdonm@mbq-tmt.org](mailto:rdonm@mbq-tmt.org)**

Dear Chief Maracle,

Thank you for your letter dated April 13, 2010.

Yes, as I am sure you are aware, the information session on the Territory went ahead as planned. We were quite pleased with the results. Approximately 35 people attended. Many questions were asked and much feedback given. For your interest, the dominant areas of interest expressed that session were protecting water, air and land for future generations and creating partnerships for employment.

We are delighted that you are now thinking that you would like to be more actively involved in the project. We will do what we can to facilitate your review. You will understand that we are not in a position to fund independent technical reviews by every person who expresses an interest. As the designated authority, the Ministry of the Environment has the primary responsibility to conduct the review. We do recognize, though, that the Mohawks of the Bay of Quinte have a special interest and concerns relating to potential impact of our facility on ground and surface water. We are sure that if we were to sit down with you and your advisors we could reach agreement on our financing of a review of the relevant aspects of the application.

Chief Maracle, we very much hope that, after so many false starts, your letter to us signifies a new era of cooperation between between our company and the Mohawks of the top Bay of Quinte. I look forward to hearing from you as to when would be a convenient time to discuss your participation.

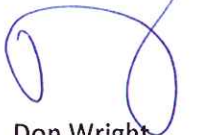
Two last comments:

- Your letter contains a number of statements about constitutional and other legal principles -- for example the impact of the Canadian Environmental Assessment Act, the nature of the

constitutional obligations of the Province of Ontario, the place of our consultation process in the context of the relationship between the Mohawks of the Bay of Quinte and the Province, and the concept of full and informed consent. We cannot claim any special expertise in these matters and so have chosen not to address them. Our failure to do so should not however be taken as acceptance of or acquiescence to any of such statements.

- We did not receive your letter until April 21. It would be terrific if you could send future correspondence by e-mail as well. That way we will receive it much more quickly -- thank you!

Yours very truly,



Don Wright  
Vice President

DW/kt

Cc: Randy Harris, Site Manager, Waste Management  
Honourable Leona Drombrowsky, Minister  
Honourable John Gerretsen, Minister of Environment  
Honourable Dalton McGuinty, Premier of Ontario  
Tyendinaga Mohawk Council  
Brian Hamilton, CAO  
Sue Maracle, Finance





## Appendix D.3 OH#2 Materials







**Appendix D.3.1      Display Information**  
- OH#2 Display Boards



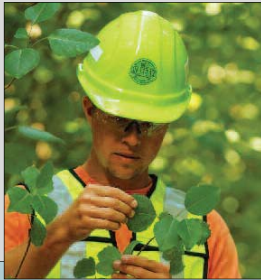
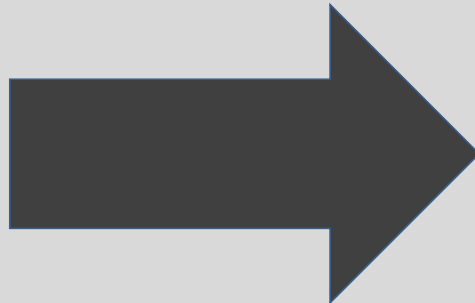




# Welcome

Waste Management of Canada Corporation is pleased to introduce an exciting new approach to waste management in the Region:  
The ***Beechwood Road Environmental Centre***

Please take a few moments to browse the display material and talk to our staff and consultants.





## The Beechwood Road Environmental Centre At a Glance

Waste Management of Canada Corporation is proposing a new, integrated multi-purpose waste management facility to serve the Town of Greater Napanee and the surrounding region. Waste Management has a strong commitment to Napanee, its immediate neighbours and the surrounding communities. This commitment extends beyond just meeting regulatory standards to being a responsible environmental steward and an engaged corporate citizen.

The Beechwood Road Environmental Centre will focus on waste diversion, diverting as much waste as possible away from disposal to reuse and recycling purposes. It will also include:

- Additional lands set aside for community sports and recreational purposes;
- Wildlife habitat;
- A state-of-the-art, environmentally engineered landfill for disposal of residual waste;
- Clean renewable energy generation.

*Below is an artist rendering of the proposed facility, which will inevitably change as a result of the consultation process.*





## Diversion and Recycling

The proposed Beechwood Road Environmental Centre (BREC) facility will be aligned with Napanee's long-term waste management goals and the province's environmental values and policy statements relating to zero waste, climate change and green energy creation.

*"Today, our region diverts less than 30 per cent of waste away from disposal. We believe our Environmental Centre will help significantly increase the percentage of material that we can divert for re-use and re-cycling."*

- LINDA COOPER

*BREC Community Relations Representative*

To pursue this vision, our facility will include a number of industrial, commercial and residential waste diversion operations that will maximize the value of the resources we receive. These include:

- **Material Recycling Facility**, which will house the latest technology to sort and process paper, glass, plastics, metals and electronics that can be processed into products. The facility will help divert thousands of tonnes of material from disposal, reducing the need for new resources to create products;
- **Construction and Demolition Material Facility**, which will receive construction and demolition materials for re-use and recycling. Many of the materials are valuable and can be re-used, thereby avoiding disposal;
- **Residential Diversion Facility**, which will allow local residents to drop off household hazardous and electronic waste and household recyclables including scrap wood, plastic, metal, paper, drywall, concrete, paints, and more. These recyclables will be transported to the material recycling or construction and demolition facilities for processing;
- **Organics Processing Facility**, which will have the capacity to receive and process compostable waste from industrial, commercial and institutional sources; and,
- **Electronic Waste Handling Facility** will also be included at BREC.





## Community Development

*“The proposed Beechwood Road Environmental Centre builds on our long standing commitment of being an engaged and responsible corporate citizen to create significant community and economic benefits.”*

- RICK SEMENIUK

*District Manager for Eastern Ontario*

- **Economic Development:** The Beechwood Road Environmental Centre (BREC) will create up to 75 new, green jobs in waste diversion, disposal and green energy facilities. Economic benefits will also extend to the larger community through community host agreements, as well as funds to support local projects. In addition, revenue opportunities will be created from waste diversion activities for local processors and downstream activities related to recycling and re-use.
- **Wildlife Habitat:** An on-site wildlife habitat centre has been opened to the public and will continue to serve as an education centre for the community. Our current landfill facility has received international recognition for its contribution to wildlife habitat conservation in the form of a Wildlife Habitat Council (WHC) certification in 2006.
- **Recreation:** Waste Management’s current landfill operation has extensive non-operational lands. Some space will be required to support the facility’s operation, but other lands will be dedicated for community uses that could include sports fields, biking and hiking trails and a leash-free dog park.
- **Community input** will be an important part of determining the ultimate use of non-operational areas at the BREC facility. Residents and community leaders have told us that they value increasing the amount of available recreational and community lands. We are responding by setting aside space surrounding our operations for dedicated community use.







## Environmentally Engineered Landfill

We plan to develop a new state-of-the-art landfill with a capacity of about 13 million tonnes and an expected life of approximately 20 years for the disposal of residual material.

*“The Beechwood Road Environmental Centre will include a new, state-of-the-art, environmentally engineered landfill that will receive materials that cannot be diverted towards re-use, recovery or recycling”*

- RANDY HARRIS  
BREC Facility Manager

- The new landfill will accept a significantly smaller amount of waste than was previously proposed.
- The new landfill will be constructed on a new area within the current site, using the latest technology and processes to ensure the highest available standards of safety and efficiency.
- This new engineered landfill will include a liner system, leachate collection and monitoring system to continuously protect ground and surface water.
- Landfill gas is created naturally through the decomposition of waste in landfills. Like wind and solar power, landfill gas is a natural resource that can be harnessed to produce clean energy.
- The facility will be able to generate six megawatts of electricity; enough energy to power the equivalent of 6,000 homes for a year (e.g., a community the size of Napanee).





## Terms of Reference

The Terms of Reference (referred to as TOR) is the first step in the EA process. The TOR provides a framework (or work plan) for conducting the EA studies and assessing predicted impacts of the project. The TOR will be submitted to the Minister of the Environment for approval consideration. Once approved, the TOR specifies how the EA studies will be conducted.

- For the proposed Beechwood Road Environmental Centre (BREC) facility, only the landfill that is intended to receive residual wastes, which cannot be recycled or reused, is subject to an EA under the Ontario *Environmental Assessment Act*.
- Other facility components of the BREC, such as materials recycling facility, construction and demolition materials facility, and organics processing facility, require government approvals such as Certificate of Approval.
- Components, such as Waste Electrical and Electronics Equipment (WEEE) and Public Drop-off Facility for recyclable materials, have already been implemented.
- The EA process for new or expanded landfills begins with a Notice of Commencement of the EA and development of a Terms of Reference (TOR).
- The proposed TOR will be drafted by WMCC in consultation with the Ministry of the Environment, surrounding communities and interested parties.
- The decision to approve or reject the TOR, or approve the TOR with conditions, is made by the Minister of the Environment.
- Public input and consultation is an important part of the development of the Terms of Reference.





## Opportunity Analysis

Prior to initiating the EA, we studied our business opportunities in the waste management market in eastern Ontario. We concluded that there is a continuing need for waste disposal services in this region including servicing the needs of our residential, industrial, commercial & institutional (IC&I) and construction & demolition (C&D) customers in eastern Ontario.

We considered a wide range of ways to meet the need for waste disposal services in eastern Ontario.

We considered the following possible alternatives:

1. Do nothing;
2. Close current landfill and continue to use site as a transfer and processing facility and haul wastes to a disposal facility elsewhere;
3. Construct a thermal destruction facility at the site;
4. Establish a new landfill elsewhere;
5. Close the current landfill and establish a new landfill on-site; and,
6. Close the current landfill and establish a new landfill for disposal of residual wastes on-site as part of a comprehensive waste management system that encompasses the proposed Beechwood Road Environmental Centre.

Of these, we determined that alternative #6 was the only reasonable option available, which was financially feasible, within our current properties and within the framework of our core business competencies.





# Alternative Methods

“Alternative methods” is a term used in EA and is the assessment of the different ways of implementing the proposed undertaking. For example, the proposed new landfill footprint for residual waste could be constructed in different locations and configurations (e.g., size, height, etc.). In the EA process, “alternative methods” are evaluated with respect to potential adverse effects on the environment and a preferred alternative is identified.

## Identifying Alternative Methods

We are proposing a range of new landfill footprint alternatives that could be located within an ‘envelope’ or area on land owned or optioned by Waste Management.

A **workshop** was held on **March 25, 2010** to obtain input from stakeholders on the proposed new landfill footprint envelope, the draft alternative evaluation criteria and their relative importance.

## Comparing Alternative Methods

To compare and evaluate alternative methods, we have established draft Environmental Evaluation Criteria within the following categories: Environmental, Socio-Economic and Technical Criteria

Please help us to confirm the evaluation criteria and to establish the relative importance of criteria.

The criteria and importance will be used during the EA studies to help us compare and rank alternatives and to select a preferred landfill development alternative.





## Evaluation Criteria for Comparing Alternative Methods

Evaluation Criteria will be used as a basis for comparing alternative methods and identifying a preferred alternative. Evaluation criteria may be broadly grouped into Environmental, Socio-economic and Technical categories. Each category contains environmental components, such as “Atmospheric Environment,” which can be further broken down into sub-components such as “air quality”, “noise” and “odour”. These criteria form the basis for characterizing existing environmental conditions, for assessing potential adverse effects of the undertaking and comparing alternative methods.

Environmental Component	Sub-Component
<b>Atmosphere</b>	Air quality, Noise, Odour
<b>Geology &amp; Hydrogeology</b>	Groundwater quality
<b>Surface Water Resources</b>	Surface water quality, Surface water quantity
<b>Biology</b>	Terrestrial ecosystems, Aquatic ecosystems
<b>Archaeology and Cultural Heritage</b>	Cultural and heritage resources Archaeological resources
<b>Transportation</b>	Effects on airport operations Effects from truck transportation along access roads
<b>Land Use</b>	Effects on current and planned future land uses

Socio-Economic Component	Sub-Component
<b>Economic</b>	Effects on cost of service to customers/neighbours Continued service to customers Effects on/benefits to local community
<b>Social</b>	Visual impact of facility
<b>Aboriginal</b>	Potential effects on aboriginal communities

Technical Criteria	Sub-Component
<b>Site Design and Operation</b>	Site design and operational characteristics

Please complete your comment sheet and your assessment criteria form to help us understand the importance of the criteria presented and whether there are other criteria we should be considering as part of the EA.





# Consultation Program

Consultation during the development of the Terms of Reference (TOR) and throughout the EA process involves a variety of activities. The local community, neighbours, municipalities, First Nations communities, including the Mohawks of the Bay of Quinte, and interested parties are invited to become involved through participation at Open Houses, a workshop and meetings. Information is available through an internet site, newsletters, phone, email, and informal meetings.

### TOR Open House #1

Was held in Napanee on **March 10, 2010** from **2:00 - 9:00 p.m.** to present information on and discuss the Proposed TOR for the EA and an overview of the EA process.



### TOR Workshop

Was held in Napanee on **March 25, 2010** from **6:00 - 9:30 p.m.** to discuss landfill site development alternatives and draft evaluation criteria.



### TOR Open House #2

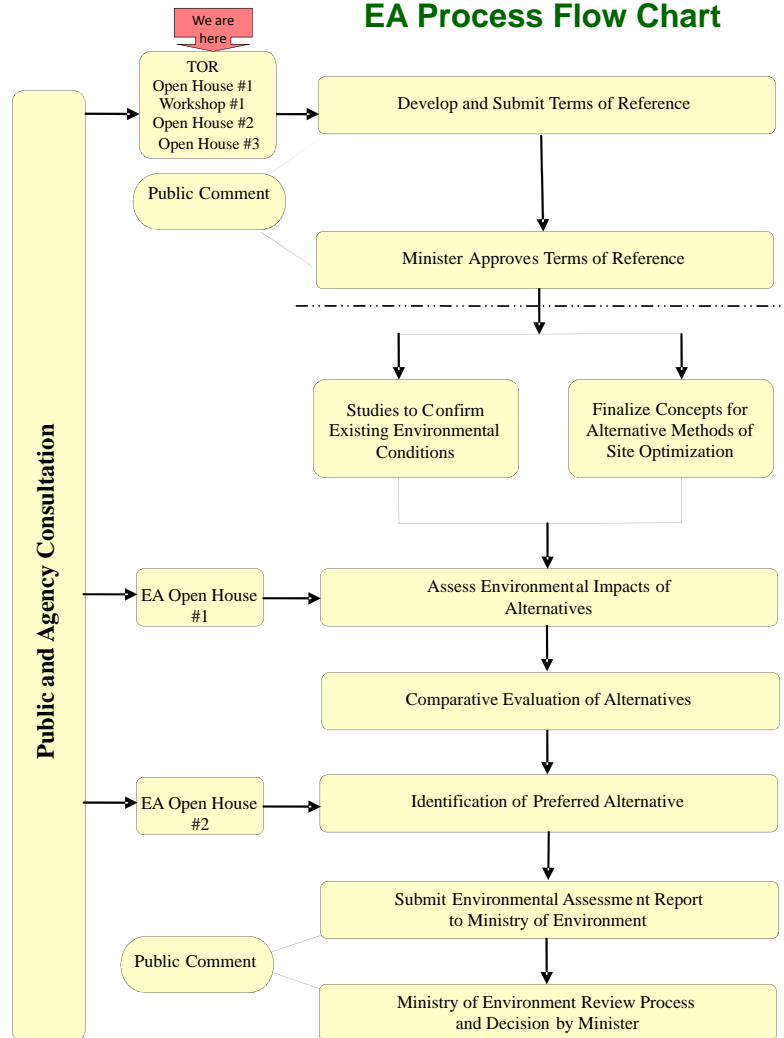
Will be held in Napanee on **April 14, 2010** from **2:00 - 9:00 p.m.** to present results of the public and agency input received to date.



### TOR Open House #3

Will be held in Napanee in **mid-May** to present the results of additional public and agency input received and review the proposed TOR before submission to the Ministry of the Environment.

## EA Process Flow Chart



Consultation events are your opportunity to get involved in the EA process to let us know your opinion and ideas about the proposed development at the Napanee site.





## Feedback from Open House #1 March 10, 2010

Open House #1 had 50 attendees including neighbours, businesses, agencies, municipal councillors, media representatives and members of the general public. The feedback received is summarized below.

### Open House information:

- It laid the foundation .. gave me a good understanding of this new starting point.
- Good layout of posters, needs more posters on criteria/impacts on community (as for your possible assessment criteria).
- Lots of info, well laid-out, way better plan than before.
- Adequate overall preview, disappointing lack of specifics, and few clear answers regarding WM financial decisions/exposure/risk aversion.

### Proposed project and process:

- I am impressed with the ideas put forth regarding changes at the landfill. Lots of forward thinking involved.
- I'm happy with the process... only hoping that there won't be a lot of opposition by people who have made up their minds and don't want to listen to the facts.

### Proposed evaluation criteria:

- Very important criteria included air quality, land ecosystems, groundwater quality, and surface water quality.
- Important criteria include noise, visual impacts, cultural heritage and archaeological resources.
- Westerly options preferred over easterly options since they are closer to the Deseronto Road, which is better from a transportation perspective. Westerly options are preferred from a visual impact perspective as the landfill will be sheltered by the wetland conservation area to the north, existing closed landfill site to the south and other wooded areas/open land to the west.

### General Comments

- Concerned about the potential odours from the composting process and whether the process can be moved inside to mitigate air problems through filtering.





## Feedback from Workshop March 25, 2010

The Workshop had 21 attendees including neighbours, businesses, agencies, municipal councillors, media representatives and members of the general public. The feedback received is summarized below.

### **Need** for a new landfill footprint:

- General agreement that there is a need for more waste disposal capacity in Eastern Ontario.
- Waste needs to go somewhere – shipping waste across the border is not a solution. What happens when the border closes to waste?
- What will happen if there is no capacity to take garbage in Ontario?
- Taking trash across the border costs money – very heavy burden on the taxpayer.
- People should have to pay more for waste disposal services – there would be better diversion rates as a result.
- BREC can be a regional centre of excellence, a model for other waste centres.
- It is better if waste goes to an organized centre such as BREC instead of it going to a larger number of small municipal sites, since BREC will be much better equipped to sort, recycle and divert waste from a landfill. The smaller sites don't do much recycling and are not well-managed.
- An increase of 1.5 to 2% per year might be hard to achieve – progress may be slow.
- What does “aggressive diversion” mean? Is a 2% annual increase in diversion realistic and achievable? Where did that number come from?
- Why haven't more sites been created?
- Why is less landfill capacity being sought in this project versus the previous project, if landfill needs in Eastern Ontario could potentially increase.
- Has the closure of municipal landfill sites been considered, like the two landfills in Stone Mills that are reaching capacity?







## Feedback from Workshop March 25, 2010

### Alternatives to a new landfill footprint:

- There was general agreement that the 'alternatives to' assessment was adequate – no other factors were identified that need to be considered.
- What about incineration – is that an option?
- There was general agreement that alternative 6 (new landfill footprint with enhanced diversion) was preferred.
- Everyone produces waste and no one wants to deal with it – someone needs to take responsibility.
- Saw a documentary on a landfill site in BC – we need tougher regulations passed so that we are forced to deal with our own waste.
- The Province should step in and take responsibility and pass an Act that says how it should be done and it should be imposed on Ontario that we have to take care of our own garbage.
- This process is going to be better than the last process.





## Feedback from Workshop March 25, 2010

### **Alternatives methods** for a new landfill footprint:

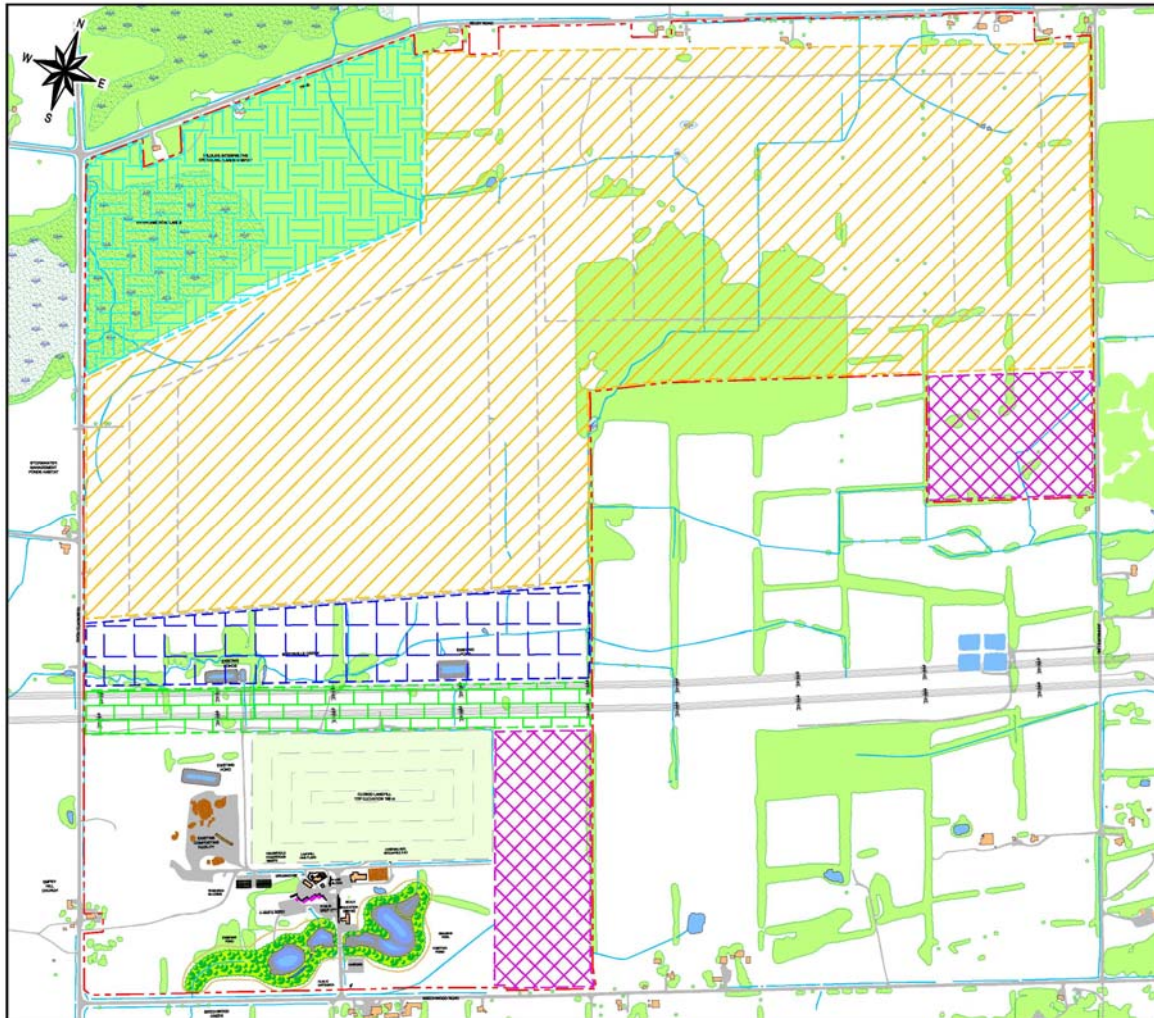
- There was general agreement that the information presented and the analysis undertaken to determine the most suitable land envelope for the new landfill footprint was understandable and appropriate.
- The land area (envelope) identified is appropriate because of visual appearance considerations, accessibility, and availability of land.
- There was considerable discussion about different configurations within the identified envelope such as extending the existing landfill to the east, increasing the height and various footprint shapes.
- The group felt that they do not like symmetrical objects and it is preferred for the area to be developed to blend with the surrounding area, and encourage public uses.
- Buffer zones should be in addition to the 50 – 55 ha landfill footprint.
- The alternatives for the new landfill footprint should be identified and evaluated in the EA process.
- The cost of landfill liner and different landfill orientations should be identified and evaluated in the EA process.
- Encouraging public use on the site could help promote the project because that would help people realize that the Site is being operated in an environmentally healthy manner and it is much more safer than what the opposition is making it out to be.





# Feedback from Workshop March 25, 2010

Alternative methods or ways of developing a new landfill footprint were identified using constrained mapping.



CONSTRAINTS AND DEVELOPMENT OPPORTUNITIES  
FOR NEW LANDFILL FOOTPRINT  
WASTE MANAGEMENT OF CANADA CORPORATION

**LEGEND**

- PROPERTY BOUNDARY OF LANDS OWNED/OPTIONED BY WASTE MANAGEMENT
- POTENTIAL DEVELOPMENT AREA FOR LANDFILL FOOTPRINT, INFRASTRUCTURE, AND/OR COMMUNITY LANDS
- POTENTIAL INFRASTRUCTURE AREA
- CONSTRAINT HYDRO CORRIDOR
- CONSTRAINT MARYSVILLE CREEK
- CONSTRAINT WETLAND CONSERVATION AREA
- LANDFILL ALTERNATIVE FOOTPRINT





# Napanee Site



**Aerial photograph of the proposed undertaking and surrounding area**





## Feedback from Workshop March 25, 2010

**Proposed criteria** that will be used in the EA to compare alternatives and identify a preferred alternative for the new landfill footprint were discussed.

### Comments and questions raised by workshop participants:

- There was a discussion on site geology and it was noted that the BREC proposal should be put into perspective as other new sites have been located in quarries and fractured limestone.
- There was a long discussion about economic benefits to local municipality from Napanee councillor and a local business person. Discussed the fact that the Napanee Sewage Treatment Plant (STP) could be upgraded to treat the leachate and also help the municipal infrastructures from revenues/cost savings that the BREC would provide.
- There was discussion on how the wetland to the northwest will be protected from surface water impacts.

**Workshop Participant Rating of Assessment Criteria**

Criteria	Very Important	Important	Less Important
Groundwater quality	✓		
Site design and operations	✓		
Surface water quality	✓		
Surface water quantity	✓		
Air quality	✓		
Odour	✓		
Terrestrial ecosystems	✓		
Effects from truck traffic along a access roads	✓		
Continued service to customers	✓		
Aquatic ecosystems	✓		
Economic benefits to local municipality	✓		
Effects on the cost of services to customers	✓		
Effects on current and planned future land uses		✓	
Recreational facilities		✓	
Archaeological resources		✓	
Visual impact of the facility		✓	
Effects on airport operations		✓	
Noise			✓
Displacement of agriculture land			✓
Aboriginal Community Interests	To be determined with aboriginal communities		





# Consultation Feedback Government Review Team

Stakeholders representing various government agencies were contacted through email and mail inviting them to participate in the consultation process. The feedback received to date is summarized below.

Agency	Comment
Ministry of Tourism and Culture – Heritage Operations Unit	<p>Site contains high archaeological potential and, therefore, an archaeological assessment will be required for this undertaking.</p> <p>Require completion of a Built Heritage Resources and Cultural Heritage Landscapes Assessment Checklist to determine whether a qualified heritage consultant must be retained to carry out a Heritage Impact Assessment.</p> <p>Completed checklists should be returned to the Ministry, along with any additional relevant information, such as maps (key location and site plan preferred) and photos.</p>
Ministry of Health and Long-Term Care	Wish to be kept informed of any further development and recommended that input be requested from the local Medical Officer of Health for the Health Unit – Kingston, Frontenac and Lennox & Addington Health Unit.
Quinte Conservation Authority	<p>Broadly identified the types of concerns that they would like to be addressed during the EA process:</p> <ul style="list-style-type: none"> <li>- watercourses and wetlands within the study area;</li> <li>- suggest a fisheries assessment be conducted;</li> <li>- recommend a terrestrial survey be conducted; and</li> <li>- recommend a comprehensive sampling regime which outlines the baseline water quality and quantity conditions and an evaluation of any anticipated impacts.</li> </ul>
Indian and Northern Affairs Canada	<p>Indicated that there is no active litigation with First Nations in the vicinity of this property.</p> <p>Advised that First Nations in the vicinity of the project should be contacted to advise them of intentions for the project.</p>





# Consultation Feedback Aboriginal Communities

Aboriginal groups with potential interest in the study area were contacted. The main feedback received to date is summarized below.

Aboriginal Groups Contacted	Response Summary
Mohawks of the Bay of Quinte	No response received to date.
Alderville First Nation	Requested that they be made aware of any undertaking in the Alderville First Nation Traditional and Treaty Territories that have potential economic benefits to community members.
Chippewas of Mnjikaning (Rama)	Wish to receive: <ul style="list-style-type: none"> <li>- project information electronically via email;</li> <li>- hard copies of the relevant Environmental Site Assessment and Site Selection studies, or draft plan of subdivision, as well as all applicable Reports (Stage 1-3) of Archaeological Assessments conducted for the subject property; and</li> <li>- a summary statement indicating how the project will address the following areas that are of concern to our First Nation within Traditional and Treaty Territory.</li> </ul>
Algonquins of Pikwakanagan First Nation	No response received to date.
Curve Lake First Nation	No response received to date.
Hiawatha First Nation	No response received to date.
Mississaugas of Scugog Island	No response received to date.
Wendat-Huron First Nations	No response received to date.





## Next Steps

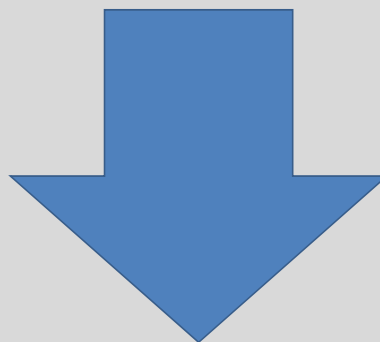
During the next few weeks, we will continue to compile and consider all of the feedback received from the various consultation events. We will also meet and discuss proposed work plans for the EA with members of the Government Review Team. In addition, we will continue to seek input from aboriginal communities.

All of the information received will be considered and incorporated into the Terms of Reference (TOR) for conducting the environmental assessment of the proposed undertaking (i.e., new landfill footprint).

We intend to submit the TOR to the Ministry of the Environment in late spring upon submission of the TOR to the Ministry, they are required to post it for a 30 day public review period. The public is invited to provide their comments to the MOE during this period.

Want more information?

- Attend Open House #3 that will be held in mid-May to learn about what is in the Terms of Reference and provide your comments.
- Meet with us individually or in groups to ask questions, express your viewpoints or provide your input.
- Visit our website <http://brec.wm.com> to get more information or to provide your comments.







### Appendix D.3.2

#### Handouts

- Attendance Sheet
- Comment Sheets
- Environmental Components Ranking Sheet
- Copies of OH#1 Display Boards (see Appendix B.2.1)
- Copies of OH#2 Display Boards (see Appendix D.2.1)
- Copies of the Workbook (see Appendix C.2.1)





Open House #2 – April 14, 2010



ATTENDANCE LIST

	<i>Name (Last, First)</i>	<i>Address</i>	<i>Postal Code</i>	<i>Phone Number</i>	<i>Email</i>
1					
2					
3					
4					
5					
6					
7					
8					
9					
10					
11					
12					
13					
14					



## Comment Sheet

### Open House #2

### Development of the ToR

for the

### Environmental Assessment of New Landfill Footprint at Napanee

April 14, 2010

Please take a few minutes to fill in this comment sheet.

*Under the Freedom of Information and Protection of Privacy Act and the EAA, unless otherwise stated in the submission, any personal information such as name, address, telephone number and property location included in a submission will become part of the public records files for this matter and will be released, if requested, to any person.*

Name \_\_\_\_\_ email \_\_\_\_\_

Address \_\_\_\_\_ Phone Number \_\_\_\_\_

**1. Please provide any general comments regarding this evening's Open House.**

---

---

---

---

---

**2. Please provide any comments or questions that you have regarding the Terms of Reference.**

---

---

---

---

---

---

---

---



## Comment Sheet

---

**3. Please provide any comments or questions that you have regarding the ongoing consultation program.**

---

---

---

---

---

---

**4. Please provide any comments or questions that you have regarding the feedback received from the public consultation program so far.**

---

---

---

---

---

---

**5. Please provide any comments or questions on any aspect of the EA and Terms of Reference.**

---

---

---

---

For more information please see our website at <http://brec.wm.com>, call us at 613-354-1060 and email [rharris@wm.com](mailto:rharris@wm.com) or [lcooper1@wm.com](mailto:lcooper1@wm.com)

## Open House # 2

### Please rank the environmental components

A total of ten environmental components and several sub-components have been proposed for the EA analysis. At previous consultation events participants provided their ratings for the individual environmental sub-components. Please take a moment and tell us your ratings for the ten environmental components.

- Do you think that all ten environmental components listed in the table below should be rated equally?  
Yes  No
- If you answered no please indicate your ratings below.

Environmental Component	Sub-components	Rating			
		Very Important	Important	Less Important	Not Important
1) Atmosphere	Air, odour and noise				
2) Geology & Hydrogeology	Groundwater quality				
3) Surface Water	Surface water quantity and surface water quality				
4) Biology	Terrestrial ecosystems and aquatic ecosystems				
5) Archaeology and Cultural Heritage	Archaeological resources and Cultural Heritage Resources				
6) Transportation	Effects on airport operations and effects from truck traffic along access roads				
7) Land Use	Effects on current and planned future land uses including agriculture				
8) Socio-economic	Visual effects, economic benefits of project to community and customers				
9) Aboriginal	Potential effects on aboriginal communities and use of lands for traditional purposes				
10) Site Design and Operations	Different site designs may affect the complexity of ongoing landfill operations.				

Name: \_\_\_\_\_ Address: \_\_\_\_\_  
 Phone: \_\_\_\_\_ E-Mail: \_\_\_\_\_

*Under the Freedom of Information and Protection of Privacy Act and the EAA, unless otherwise stated in the submission, any personal information such as name, address, telephone number and property location included in a submission will become part of the public records files for this matter and will be released, if requested, to any person.*

**If you do not have time to submit your comment sheet this evening, please email, mail or fax your comments by April 24, 2010 to 1271 Beechwood Road, RR #6, Napanee Ontario K7R 3L1  
 Fax 613-388-2785 Email: brec@golder.com. Thank You.**