



Terms of Reference for a New Landfill Footprint
Consultation Record

Appendix F

Open House #3 – Consultation Report and Materials



June 2010



Introduction

This appendix describes Open House (OH) #3 held on April 28, 2010 at the Darran Green Sandblasting and Darran Green Construction, 51 Billy Brew's Road in Tyendinaga, Ontario.

Appendix F.1 contains the OH #3 Consultation Report, which provides an overview of the event. Appendix F.2 contains OH #3 Notification Materials including advertisements, media releases, agency correspondence, and public stakeholder correspondence. Appendix F.3 contains the OH #3 Materials including the display information and handouts.





Appendix F.1 Open House #3 Consultation Report



June 2010



Open House #3 Consultation Report
April 28, 2010
New Landfill Footprint
Beechwood Road Environmental Centre

Open House (OH) # 3 was held at the Darran Green Sandblasting and Darran Green Construction located at 51 Billy Brew's Road in Tyendinaga, Ontario on April 28, 2010 from 2 p.m. to 8 p.m. Approximately 34 people attended. Most of these had not attended previous consultation events. Several WM staff and consultants were in attendance to answer questions and discuss issues with attendees.

The purpose of this OH was to present to the Mohawks of the Bay of Quinte, in the form of an information session, Waste Management of Canada Corporation's (WM) proposal to develop a new landfill footprint as a part of the Beechwood Road Environmental Centre (BREC). In addition, WM intended for this event to provide an update on the status of the project and to allow for another opportunity for the residents of the Tyendinaga Territory to discuss the project and provide input on evaluation criteria and any other topic.

Ten display boards were presented as shown in Appendix D.

There were many comments on the BREC project being well thought out and a good opportunity for the community. Attendees were invited to provide input on the relative importance of environmental components. The results of this analysis are presented in the table below. The numbers in each cell represent the check marks that were received in each box (i.e. for each criterion). According to this analysis, air quality, aquatic ecosystems, groundwater quality and surface water quality were determined to be very important criteria.





Table 1: Proposed Assessment Criteria

Criteria	Very Important	Important	Less Important	Not Important
Aboriginal Community Interests	5	2	0	0
Air quality	7	0	0	0
Aquatic ecosystems	7	0	0	0
Archaeological resources	5	1	0	0
Continued service to customers	5	1	0	0
Cultural heritage resources	4	1	0	0
Effects from truck traffic along access roads	0	1	2	1
Effects on airport operations	0	2	4	0
Effects on cost of service to customers/neighbours	0	1	4	0
Effects on current and planned future land uses	2	2	1	0
Effects on occupational health of the workers	4	1	0	0
Effects on/benefits to local community	5	0	1	0
Groundwater quality	7	0	0	0
Noise	2	2	2	1
Odour	2	1	1	2
Surface water quality	7	0	0	0
Surface water quantity	6	1	0	0
Terrestrial ecosystems	6	0	0	0
Visual impact of the facility	0	2	0	4

Two completed comment sheets were received. Both found the WM representatives to be agreeable and communicative. One of the two liked the general idea of the project saying “it is a good plan” while the other wanted to see more detail about the number of jobs created.





Appendix F.2 Open House #3 Notification Materials

- Notice
- Letter to Chief Maracle
- Correspondence



June 2010

Invitation for the Third Open House Sent to Members of the
Mohawks of the Bay of Quinte



Open House

Beechwood Road Environmental Centre

April 28th 2 P.M. to 8 P.M.

51 Billy Brews Rd, Tyendinaga Mohawk Territory

Waste Management will be holding an Open House as an information session to explain their new Project - 'The Beechwood Road Environmental Centre'

The Beechwood Road Environmental Centre will focus on waste diversion, diverting as much waste as possible away from disposal to reuse and recycling purposes.

It will also include:

- Additional lands set aside for community sports and recreational purposes;
- Wildlife habitat;
- A state-of-the-art, environmentally engineered landfill for disposal of residual waste;
- Clean renewable energy generation.

We will have experienced Waste Management staff on hand to answer any questions or concerns you may have.

Refreshments will be served

If you require any further information please feel free to call and ask for Randy Harris or Linda Cooper at 613-388-1057

We look forward to seeing you there.

Invitation Letter Sent to Chief Maracle and the Council of the Mohawks of the Bay of Quinte



WASTE MANAGEMENT
OF CANADA CORPORATION
R.R. #6
1271 Beechwood Road
Napanee, ON K7R 3L1

(613) 388-1057
(613) 388-2785 Fax

Dear Chief Maracle and Council:

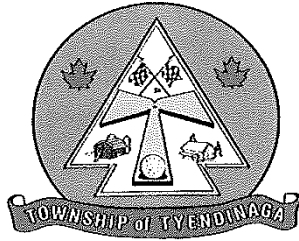
We have been presenting the concept for our proposed Beechwood Road Environmental Centre for a few weeks now. We are looking forward to presenting this to your community in the form of an information session in the near future. Our intent would be to mail out an invitation to residents in advance. We would likely hold the session on a weekday evening.

Our intent would be to show the Mohawks of the Bay of Quinte what the new facility would look like and how it would be beneficial to all of our local communities. We would note any comments and concerns that may be expressed and do our best to address them. In addition, we would like to explain how this facility would be able to protect the environment from any possible off site impacts. This last point I know is of particular importance to you. So for that reason I very much hope that you will join us for this session.

If you wish to contact me with comments, please feel free to call me anytime. At the Landfill 613-388-1057 or by mobile phone at 613-532-3106.

Randy Harris

Site Manager



April 15, 2010

Don Wright, Vice-President
Waste Management of Canada Corporation
117 Wentworth Court
Brampton, ON L6T 5L4

Dear Mr. Wright:

RE: PROPOSED BEECHWOOD ROAD ENVIRONMENTAL CENTRE

I am writing to you today in my capacity as Clerk-Treasurer, Tyendinaga Township and at the concurrence of Council.

It is my understanding that Waste Management (WM) has recently announced its plans to construct and operate the "Beechwood Road Environmental Centre" (BREC), which, among other things, includes a proposal to establish a large landfill beside the existing Richmond Landfill Site. I further understand that WM is currently seeking public input on the Terms of Reference which will direct the conduct and content of the environmental assessment that will be prepared and submitted by WM under Ontario's *Environmental Assessment Act*.

Accordingly, I am inquiring whether WM will commit to providing participant funding to Tyendinaga Township to help defray the expert and legal expenses that we will incur in the forthcoming EA process (i.e., review of WM documents).

If WM accepts, or is willing to discuss, this request for participant funding, please let me know at your earliest convenience. Please be advised, however, that if participant funding is provided by WM, the acceptance or use of such funds by Tyendinaga Township is without prejudice to, and in no way constrains or affects, our right to object to the proposed BREC facility.

I look forward to your timely response to this inquiry. I can be reached at your convenience to discuss at 613-396-1944.

Sincerely,

Steve Mercer
Clerk Treasurer
Tyendinaga Township

A handwritten signature in black ink, appearing to be "Steve Mercer", written over a horizontal line.

cc. Council

Open House #3 Correspondence with a Municipality



**WASTE MANAGEMENT
OF CANADA CORPORATION**

117 Wentworth Court
Brampton, ON L6T 5L4
(905) 595-3330
(905) 791-9595 Fax

May 4, 2010

Steve Mercer
Clerk Treasurer
Township of Tyendinaga
859 Melrose Road,
RR#1,
Shannonville, ON
K0K 3A0

SENT BY MAIL AND BY EMAIL TO: clerk@tyendinagatownship.com

Dear Mr. Mercer

Thank you for your April 15 letter.

We are disappointed that it is only now that you have chosen to correspond with us. We've tried for some time to engage in discussions but to no avail. Having said that, we are delighted that we have heard from you and that you are interested in participating in the process.

We will do what we can to facilitate your review. We are sorry to advise you, however, that we are not in a position to fund your retainer of experts and lawyers in the review of the application. As the designated authority, the Ministry of the Environment has the primary responsibility to conduct the review. In our experience, they care deeply about input from stakeholders such as yourselves. We are sure that if you were to discuss the matter with the Ministry, you would be satisfied that all of your concerns will be adequately addressed. Of course if there's anything we can do independently that would assist in this regard, please let us know. We would be delighted to have the opportunity to discuss our project with you.

One final item. We did not receive your letter until April 21. It would be terrific if you could send future correspondence by e-mail as well. That way we will receive it much more quickly -- thank you!

Yours very truly,

A handwritten signature in blue ink, appearing to be 'Don Wright', written over a blue ink scribble.

Don Wright
Vice President

Dw/kt



Appendix F.3 Open House #3 Materials



June 2010



Appendix F.3.1

Display Information

- Open House #3 Display Boards
- Constraint Map
- Environmental Criteria Ranking Sheet (see Appendix D.3.2)



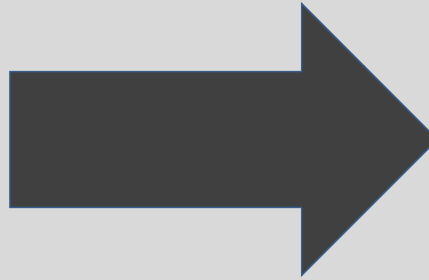


Welcome

Waste Management of Canada Corporation is pleased to introduce an exciting new approach to waste management in the Region:

The ***Beechwood Road Environmental Centre***

Please take a few moments to browse the display material and talk to our staff and consultants.



Proposed Beechwood Road Environmental Centre



The Beechwood Road Environmental Centre At a Glance

Waste Management of Canada Corporation is proposing a new, integrated multi-purpose waste management facility to serve the Town of Greater Napanee and the surrounding region. Waste Management has a strong commitment to Napanee, its immediate neighbours and the surrounding communities. This commitment extends beyond just meeting regulatory standards to being a responsible environmental steward and an engaged corporate citizen.

The Beechwood Road Environmental Centre will focus on waste diversion, diverting as much waste as possible away from disposal to reuse and recycling purposes. It will also include:

- Additional lands set aside for community sports and recreational purposes;
- Wildlife habitat;
- A state-of-the-art, environmentally engineered landfill for disposal of residual waste;
- Clean renewable energy generation.

Below is an artist rendering of the proposed facility, which will inevitably change as a result of the consultation process.



Proposed Beechwood Road Environmental Centre



Diversion and Recycling

The proposed Beechwood Road Environmental Centre (BREC) facility will be aligned with Napanee’s long-term waste management goals and the province’s environmental values and policy statements relating to zero waste, climate change and green energy creation.

“Today, our region diverts less than 30 per cent of waste away from disposal. We believe our Environmental Centre will help significantly increase the percentage of material that we can divert for re-use and re-cycling.”

- LINDA COOPER
BREC Community Relations Representative

To pursue this vision, our facility will include a number of industrial, commercial and residential waste diversion operations that will maximize the value of the resources we receive. These include:

- **Material Recycling Facility**, which will house the latest technology to sort and process paper, glass, plastics, metals and electronics that can be processed into products. The facility will help divert thousands of tonnes of material from disposal, reducing the need for new resources to create products;
- **Construction and Demolition Material Facility**, which will receive construction and demolition materials for re-use and recycling. Many of the materials are valuable and can be re-used, thereby avoiding disposal;
- **Residential Diversion Facility**, which will allow local residents to drop off household hazardous and electronic waste and household recyclables including scrap wood, plastic, metal, paper, drywall, concrete, paints, and more. These recyclables will be transported to the material recycling or construction and demolition facilities for processing;
- **Organics Processing Facility**, which will have the capacity to receive and process compostable waste from industrial, commercial and institutional sources; and,
- **Electronic Waste Handling Facility** will also be included at BREC.





Community Development

“The proposed Beechwood Road Environmental Centre builds on our long standing commitment of being an engaged and responsible corporate citizen to create significant community and economic benefits.”

- RICK SEMENIUK

District Manager for Eastern Ontario

- **Economic Development:** The Beechwood Road Environmental Centre (BREC) will create up to 75 new, green jobs in waste diversion, disposal and green energy facilities. Economic benefits will also extend to the larger community through community host agreements, as well as funds to support local projects. In addition, revenue opportunities will be created from waste diversion activities for local processors and downstream activities related to recycling and re-use.
- **Wildlife Habitat:** An on-site wildlife habitat centre has been opened to the public and will continue to serve as an education centre for the community. Our current landfill facility has received international recognition for its contribution to wildlife habitat conservation in the form of a Wildlife Habitat Council (WHC) certification in 2006.
- **Recreation:** Waste Management’s current landfill operation has extensive non-operational lands. Some space will be required to support the facility’s operation, but other lands will be dedicated for community uses that could include sports fields, biking and hiking trails and a leash-free dog park.
- **Community input** will be an important part of determining the ultimate use of non-operational areas at the BREC facility. Residents and community leaders have told us that they value increasing the amount of available recreational and community lands. We are responding by setting aside space surrounding our operations for dedicated community use.



Proposed Beechwood Road Environmental Centre



Environmentally Engineered Landfill

We plan to develop a new state-of-the-art landfill with a capacity of about 13 million tonnes and an expected life of approximately 20 years for the disposal of residual material.

“The Beechwood Road Environmental Centre will include a new, state-of-the-art, environmentally engineered landfill that will receive materials that cannot be diverted towards re-use, recovery or recycling”

- RANDY HARRIS
BREC Facility Manager

- The new landfill will accept a significantly smaller amount of waste than was previously proposed.
- The new landfill will be constructed on a new area within the current site, using the latest technology and processes to ensure the highest available standards of safety and efficiency.
- This new engineered landfill will include a liner system, leachate collection and monitoring system to continuously protect ground and surface water.
- Landfill gas is created naturally through the decomposition of waste in landfills. Like wind and solar power, landfill gas is a natural resource that can be harnessed to produce clean energy.
- The facility will be able to generate six megawatts of electricity; enough energy to power the equivalent of 6,000 homes for a year (e.g., a community the size of Napanee).



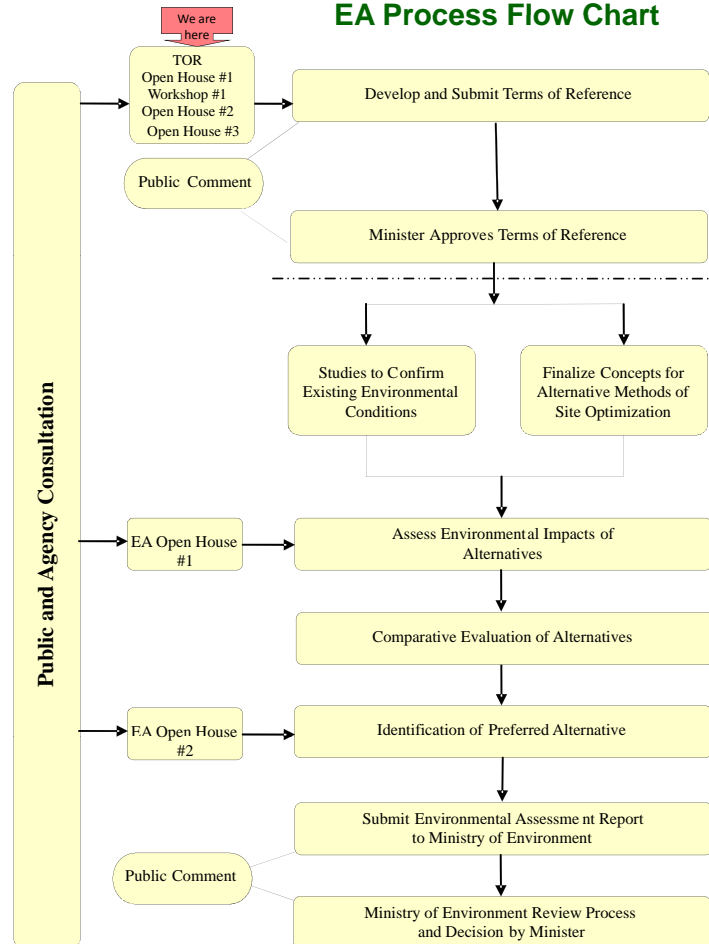
Proposed Beechwood Road Environmental Centre



Consultation Program

Consultation during the development of the Terms of Reference (TOR) and throughout the EA process involves a variety of activities. The local community, neighbours, municipalities, First Nations communities, including the Mohawks of the Bay of Quinte, and interested parties are invited to become involved through participation at open houses, a workshop and meetings. Information is available through our internet site, newsletters, phone, email, and informal meetings.

EA Process Flow Chart



Consultation events are your opportunity to get involved in the EA process to let us know your opinion and ideas about the proposed development at the Napanee site.



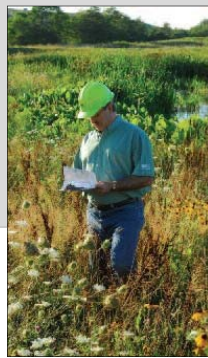
Proposed Beechwood Road Environmental Centre



What Do We Do to Protect Water?

We understand the concerns people have about ground and surface water. We have been addressing their concerns and have reached out to them on these issues. We have established a Community Liaison Committee in order to provide the community another venue for information and receive input about our operations. A spot on this committee has been reserved for the MBQ.

- WM uses advanced leachate containment, collection and treatment technologies to ensure the protection of groundwater. Collected leachate is treated to standards approved by the Ministry of Environment (MOE).
- There is routine monitoring of groundwater and surface water, the results of which are reviewed by the Ontario MOE, providing assurance the environment is being protected. We have spent a significant amount of money to monitor groundwater quality and flow, and currently have a network of more than 70 monitoring stations in place.
- The Ministry of the Environment recently completed a review of our operations and concluded our landfill is in compliance with Ministry approvals and permits.
- We have just completed the construction of five settlement ponds to further improve the quality of stormwater leaving the site.



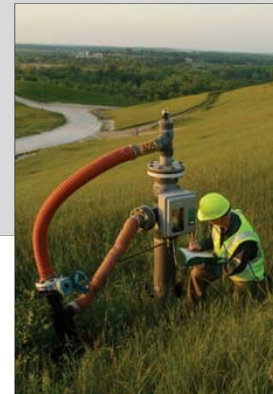
Proposed Beechwood Road Environmental Centre



How Will the Proposed BREC Facility Protect the Environment?

The Beechwood Road Environmental Centre will protect human health, safety and the environment, providing a reliable disposal option, which will be an integral part of the Town of Greater Napanee and surrounding communities waste management plans. There will be many precautionary measures in place to ensure the protection of our environment.

- The new landfill footprint will be constructed on a new area within the current site, using the latest technology and processes to ensure the highest available standards of safety and efficiency.
- This new landfill footprint will be an engineered system, which will include a liner system, leachate collection and monitoring system to continuously protect ground and surface water.
- Advanced leachate containment, collection and treatment technologies will be installed to ensure the protection of groundwater and surface water.
- Landfill gas that is created naturally through the decomposition of waste in landfills will be collected and converted to electricity.
- Diversion activities will minimize the amount of waste that will require to be landfilled.



Proposed Beechwood Road Environmental Centre



Economic Benefits

We believe that the community in which we operate should share in the financial benefits of the project, in addition to the benefits already identified in the economic impact assessment. Some of the financial benefits would include the following.

- BREC will create up to 75 new green jobs in waste diversion, disposal and green energy facilities.
- Economic benefits will also extend to the larger community through community host agreements and funds to support local projects.
- Revenue opportunities will be created from waste diversion activities for local processors and downstream activities related to recycling and re-use.
- Continuance of existing free disposal arrangement for Town of Napanee.
- We anticipate that more than \$ 1 million worth of benefits will be available to the community.
- A Community Trust Fund can also be established, and used to support such projects as the development of recreational facilities.



Proposed Beechwood Road Environmental Centre



Evaluation Criteria for Comparing Alternative Methods

Evaluation Criteria will be used as a basis for comparing alternative methods and identifying a preferred alternative. Evaluation criteria may be broadly grouped into Environmental, Socio-economic and Technical categories. Each category contains environmental components, such as “Atmospheric Environment,” which can be further broken down into sub-components such as “air quality”, “noise” and “odour”. These criteria form the basis for characterizing existing environmental conditions, for assessing potential adverse effects of the undertaking and comparing alternative methods.

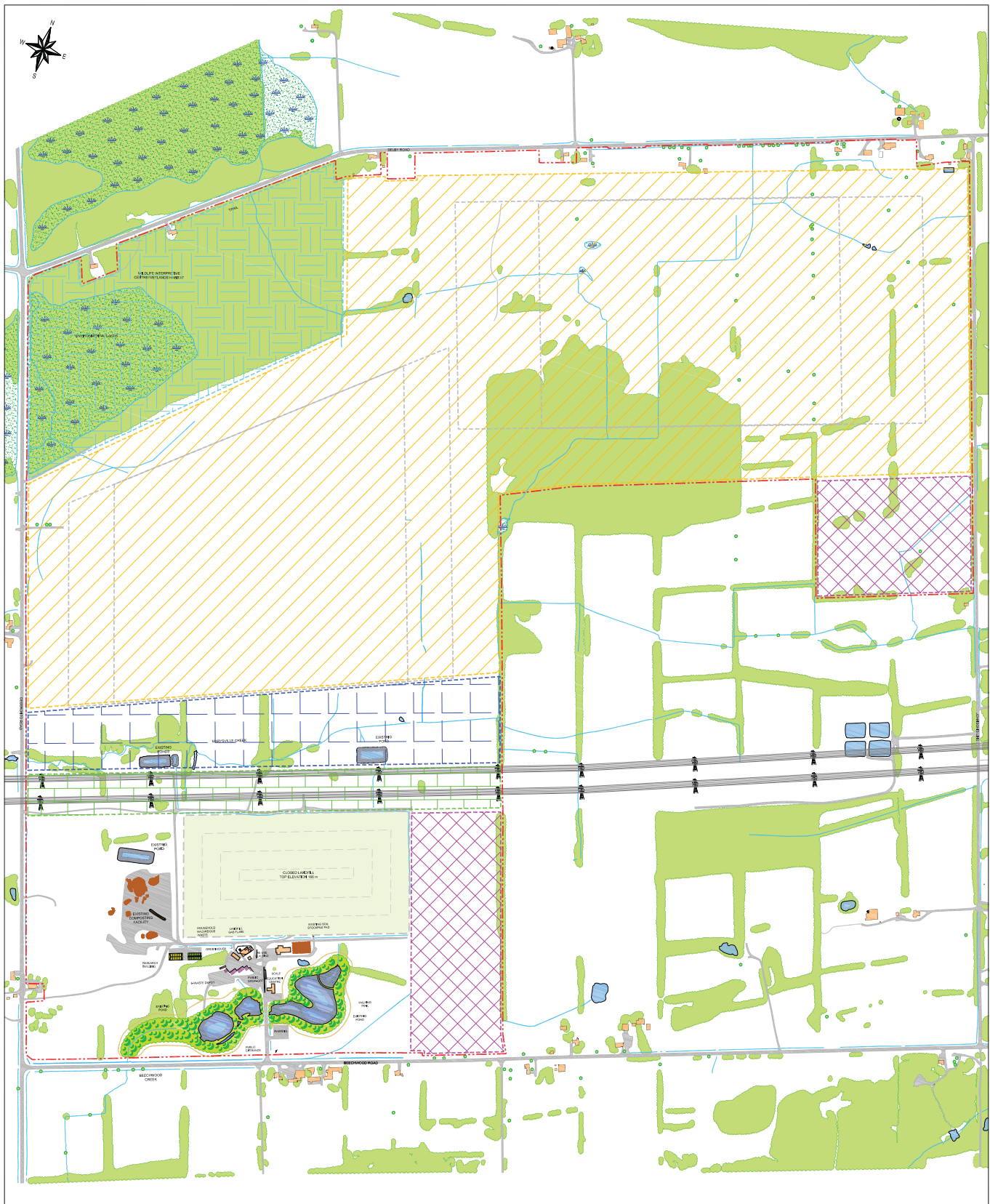
Environmental Component	Sub-Component
Atmosphere	Air quality, Noise, Odour
Geology & Hydrogeology	Groundwater quality
Surface Water Resources	Surface water quality, Surface water quantity
Biology	Terrestrial ecosystems, Aquatic ecosystems
Archaeology and Cultural Heritage	Cultural and heritage resources Archaeological resources
Transportation	Effects on airport operations Effects from truck transportation along access roads
Land Use	Effects on current and planned future land uses

Socio-Economic Component	Sub-Component
Economic	Effects on cost of service to customers/neighbours Continued service to customers Effects on/benefits to local community
Social	Visual impact of facility
Aboriginal	Potential effects on aboriginal communities

Technical Criteria	Sub-Component
Site Design and Operation	Site design and operational characteristics

Please complete your comment sheet and your assessment criteria form to help us understand the importance of the criteria presented and whether there are other criteria we should be considering as part of the EA.





LEGEND

- PROPERTY BOUNDARY OF LANDS OWNED/OPTIONED BY WASTE MANAGEMENT
- POTENTIAL DEVELOPMENT AREA FOR LANDFILL FOOTPRINT, INFRASTRUCTURE, AND/OR COMMUNITY LANDS
- POTENTIAL INFRASTRUCTURE AREA
- CONSTRAINT HYDRO CORRIDOR
- CONSTRAINT MARYSVILLE CREEK
- CONSTRAINT WETLAND CONSERVATION AREA
- LANDFILL ALTERNATIVE FOOTPRINT

160 0 160
SCALE 1:4,000 METRES

DRAFT



Figure 1
CONSTRAINTS AND DEVELOPMENT OPPORTUNITIES
FOR NEW LANDFILL FOOTPRINT
WASTE MANAGEMENT OF CANADA CORPORATION



Appendix F.3.2

Handouts

- Attendance Sheet
- Comment Sheet
- Environmental Criteria Ranking Sheet (see Appendix D.3.2)
- Copies of Open House #1 Display Boards (see Appendix A.3.1)
- Copies of Workshop Workbook (see Appendix C.3.1)
- Copies of Open House #2 Display Boards (see Appendix D.3.1)
- Copies of Open House #3 Display Boards (see Appendix F.3.1)
- Launch Package/Magazine (see Appendix A.2.3)



Open House
Thursday, April 28, 2010

Location: Darren Green Sandblasting and Painting, Deseronto, Ontario

Name	Affiliation	Address	Phone Number	Email

Under the Freedom of Information and Protection of Privacy Act and the EAA, unless otherwise stated in the submission, any personal information such as name, address, telephone number and property location included in a submission will become part of the public records files for this matter and will be released, if requested, to any person.



Comment Sheet

Open House for Developing a Terms of Reference for Environmental Assessment of New Landfill Footprint at Napanee

April 28, 2010

Please take a few minutes to fill in this comment sheet.

Under the Freedom of Information and Protection of Privacy Act and the EAA, unless otherwise stated in the submission, any personal information such as name, address, telephone number and property location included in a submission will become part of the public records files for this matter and will be released, if requested, to any person.

Name _____ email _____

Address _____ Phone Number _____

1. Please provide any general comments regarding this evening's Open House.

2. Please provide any comments or questions that you have regarding the Terms of Reference.

3. How would you like to be consulted on this project?

For more information please see our website at <http://brec.wm.com>, call us at 613-354-1060 and email rharris@wm.com or lcooper1@wm.com