

Waste Management of Canada Corporation

## **Public Open House #1 – Summary Report**

**Prepared by:**

AECOM

300 - 300 Town Centre Blvd. 905 477 8400 tel  
Markham, Ontario L3R 5Z6 905 477 1456 fax  
[www.aecom.com](http://www.aecom.com)

**Project Number:**

60263757

**Date:**

April, 2012

## Statement of Qualifications and Limitations

The attached Report (the “Report”) has been prepared by AECOM Canada Ltd. (“Consultant”) for the benefit of the client (“Client”) in accordance with the agreement between Consultant and Client, including the scope of work detailed therein (the “Agreement”).

The information, data, recommendations and conclusions contained in the Report (collectively, the “Information”):

- is subject to the scope, schedule, and other constraints and limitations in the Agreement and the qualifications contained in the Report (the “Limitations”)
- represents Consultant’s professional judgement in light of the Limitations and industry standards for the preparation of similar reports
- may be based on information provided to Consultant which has not been independently verified
- has not been updated since the date of issuance of the Report and its accuracy is limited to the time period and circumstances in which it was collected, processed, made or issued
- must be read as a whole and sections thereof should not be read out of such context
- was prepared for the specific purposes described in the Report and the Agreement
- in the case of subsurface, environmental or geotechnical conditions, may be based on limited testing and on the assumption that such conditions are uniform and not variable either geographically or over time

Consultant shall be entitled to rely upon the accuracy and completeness of information that was provided to it and has no obligation to update such information. Consultant accepts no responsibility for any events or circumstances that may have occurred since the date on which the Report was prepared and, in the case of subsurface, environmental or geotechnical conditions, is not responsible for any variability in such conditions, geographically or over time.

Consultant agrees that the Report represents its professional judgement as described above and that the Information has been prepared for the specific purpose and use described in the Report and the Agreement, but Consultant makes no other representations, or any guarantees or warranties whatsoever, whether express or implied, with respect to the Report, the Information or any part thereof.

The Report is to be treated as confidential and may not be used or relied upon by third parties, except:

- as agreed in writing by Consultant and Client
- as required by law
- for use by governmental reviewing agencies

Consultant accepts no responsibility, and denies any liability whatsoever, to parties other than Client who may obtain access to the Report or the Information for any injury, loss or damage suffered by such parties arising from their use of, reliance upon, or decisions or actions based on the Report or any of the Information (“improper use of the Report”), except to the extent those parties have obtained the prior written consent of Consultant to use and rely upon the Report and the Information. Any damages arising from improper use of the Report or parts thereof shall be borne by the party making such use.

This Statement of Qualifications and Limitations is attached to and forms part of the Report and any use of the Report is subject to the terms hereof.

Table of Contents

Statement of Qualifications and Limitations

page

1.

Introduction .....

1

1.1

Objective of the Open House .....

1

1.2

Date, Time and Location of the Open House .....

1

2.

Notification of First Public Open House .....

1

3.

Project Team Members in Attendance.....

2

4.

Information Presented .....

2

5.

Attendance .....

3

6.

Summary of Comments Received .....

3

7.

Summary .....

3

Appendices

- Appendix A. Notification of Open House #1
- Appendix B. Open House #1 Display Panels
- Appendix C. Open House #1 Comment Sheet

# 1. Introduction

Waste Management of Canada Corporation (WM), owners and operators of the existing Richmond Landfill have initiated an Environmental Assessment (EA) seeking approval for a new landfill footprint at the proposed Beechwood Road Environmental Centre (BREC). The BREC would be an integrated waste management facility that would include the following components:

- Material Recycling Facility;
- Residential Diversion Facility;
- Landfill-Gas-to-Energy Facility;
- Construction and Demolition Material Facility;
- Organics Processing Facility;
- Electronic Waste Handling Facility; and,
- A new landfill footprint for disposal of residual waste materials.

Public and external agency consultation is a key component of EA's and as such, has been incorporated into this process. A Notice of Commencement for the EA of this project, inviting initial input, was issued on March 15, 2012. This Report provides a summary of the events that took place at the first Public Open House, held March 28, 2012.

## 1.1 Objective of the Open House

The main objective of the Open House was to provide an opportunity for attendees to speak directly with WM staff members and technical consultants about the EA for a new landfill footprint at the BREC. Information presented included an overview of the approved Terms of Reference (ToR), the proposed EA work plans, the existing environmental conditions, the approach to alternative methods, the proposed evaluation methodology, and the proposed consultation for the EA.

Attendees were offered the opportunity to present their comments regarding the information directly to staff from WM and AECOM. This interaction allowed for an exchange of information that can be used to enhance the overall project.

## 1.2 Date, Time and Location of the Open House

The first Public Open House was held on Wednesday, March 28, 2012 at the Town of Greater Napanee Fire Hall from 4:00 p.m. to 8:00 p.m. The Open House followed a drop-in format, with the information illustrated on a set of display panels arranged around the perimeter of the room. In addition, relevant reference materials, such as the approved Terms of Reference, were made available for public perusal at reference tables in the centre of each room. As mentioned above, Project Team members were available at the session to answer questions from attendees.

# 2. Notification of First Public Open House

Notification of the Open House was provided through newspaper publications during the weeks of March 15 and March 22 in the *Belleville Intelligencer*, *Kingston Whig Standard*, *Napanee Guide*, and *Napanee Beaver*.

Notification was also provided on myfm radio 88.7 Napanee via an ad that ran four times daily from March 22-28, 2012. In addition, notification emails were sent to First Nation and Aboriginal representatives and affiliated agencies, as well as to the Government Review Team (GRT).

Copies of these emails and the newspaper notice are found in **Appendix A**.

### 3. Project Team Members in Attendance

The following project team members were in attendance at the Open House to answer questions:

MARCH 28, 2012 – TOWN OF GREATER NAPANEE FIRE HALL	
WM	Consulting Team
<ul style="list-style-type: none"> <li>• Tim Murphy</li> <li>• Linda Cooper</li> <li>• Randy Harris</li> <li>• Wayne French</li> <li>• Bill McDonough</li> <li>• Chris Prucha</li> <li>• Rick Semeniuk</li> <li>• Remi Godin</li> </ul>	<b>AECOM</b> <ul style="list-style-type: none"> <li>• Larry Fedec</li> <li>• Blair Shoniker</li> </ul>

### 4. Information Presented

Information presented at the Open House was in the form of display boards arranged around the room and organized to take the viewer through the current stage of the EA process. This information included:

- Outline of the BREC's various components;
- Overview of waste diversion and waste disposal at the BREC;
- Outline of community uses at the BREC;
- Closure of the Richmond Landfill;
- List of WM's community involvement in the Town of Greater Napanee;
- Details on the approved ToR and amendments;
- Approval requirements for the BREC;
- Outline of the Undertaking;
- Flow chart of the EA process;
- Map of the Study Area;
- Overview of the proposed Work Plans;
- Outline of the Existing Conditions to be collected during the next stage of the EA;
- Discussion of Alternative Methods;
- Display of constraint mapping;
- List of Evaluation Criteria;
- Overview of consultation program;
- Project Advisory Committee; and
- Next steps in the EA.

Copies of the display panels are included in **Appendix B**.

## 5. Attendance

A total of 26 individuals attended Open House #1. Those in attendance were local residents, landowners, business owners, municipal staff, agency staff, municipal politicians and Public Advisory Committee (PAC) members. Three local Councillors also attended the Open House. Comments and concerns raised by attendees included questions on the EA process, groundwater, traffic, consultation, timing, air, health, zoning, surface water, property values, employment, diversion and agriculture. Attendees were encouraged to provide written comments on the comment sheets provided. One Comment form was received.

With the exception of those that requested to be left off, all individuals and/or agency representatives who signed in with their contact information have been added to the project-specific contact database. This database will be used during the remaining phases of the study to contact/inform interested public and key stakeholders of study issues and events.

## 6. Summary of Comments Received

As of April 10, 2012, one comment sheet had been received. A copy of the comment sheet used at the open house is included in **Appendix C**.

## 7. Summary

The first Public Open House for the EA was held on March 28, 2012 at the Town of Greater Napanee Fire Hall. The first Open House was held to provide an overview of the approved ToR, the proposed EA work plans, the existing environmental conditions, the approach to alternative methods, the proposed evaluation methodology, and the proposed consultation for the EA. The Open House provided an opportunity for the public and other stakeholders to discuss the proposed undertaking and their issues or concerns directly with WM and their consulting team. This feedback will be used throughout the preparation of the EA.

A total of 26 individuals attended Open House #1. The main issues raised were as follows:

- EA Process;
- Consultation;
- Property values;
- Traffic;
- Groundwater impacts;
- Surface water impacts;
- Air impacts;
- Health impacts;
- Agriculture;
- Timing;
- Zoning;
- Diversion and
- Employment.

WM and the project team plan to review the issues and concerns raised and address them as appropriate as this project proceeds.

# **APPENDIX A**

## **NOTIFICATION OF OPEN HOUSE #1**



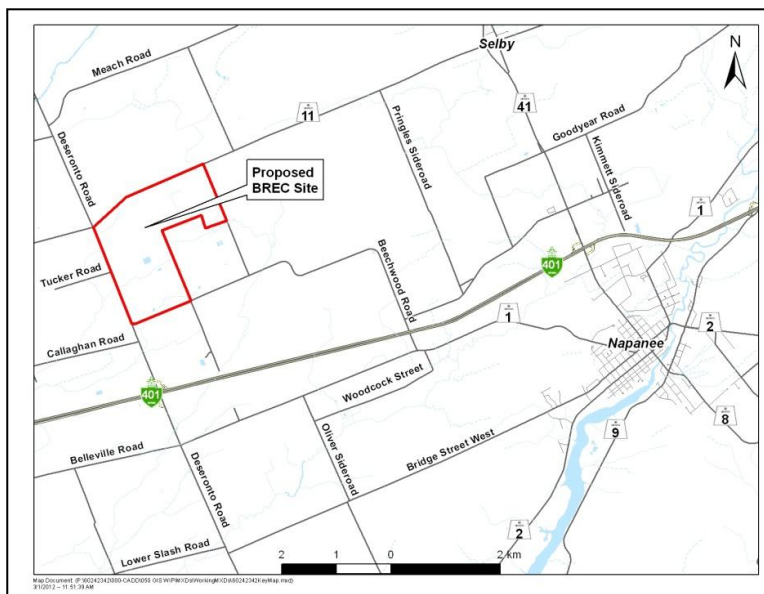
# Waste Management of Canada Corporation Environmental Assessment for a New Landfill Footprint at the Beechwood Road Environmental Centre (BREC)

## OPEN HOUSE #1

Waste Management of Canada Corporation (WM) is undertaking an Environmental Assessment (EA) for a new landfill footprint at the proposed Beechwood Road Environmental Centre (BREC). The BREC would be an integrated waste management facility that would include the following components:

- Material Recycling Facility
- Residential Diversion Facility
- Landfill-Gas-to-Energy Facility
- New Landfill Footprint
- Construction and Demolition Material Facility
- Organics Processing Facility
- Electronic Waste Handling Facility

The new landfill footprint is the only component of the BREC that requires EA approval under the *Environmental Assessment Act* (EAA). The EA will be conducted in accordance with the Terms of Reference (ToR), approved by the Minister of the Environment. The proposed location of the BREC and the new landfill footprint component is within the Town of Greater Napanee in the area shown on the map below. The purpose of the EA is to study the potential environmental effects (positive or negative) of the proposed new landfill footprint on the environment. Key aspects of the EA process include: consultation with the public, Aboriginal communities and government agencies; consideration and evaluation of alternatives; and, assessment and management of potential environmental effects. Conducting an EA promotes good environmental planning before decisions are made about a proposal.



### Consultation – Open House #1

Members of the public, Aboriginal communities, government agencies, and other interested persons are encouraged to actively participate in the EA process.

**Open House #1** will provide an overview of the following:

- the approved ToR,
- the proposed EA work plans,
- the existing environmental conditions,
- the approach to alternative methods,
- the proposed evaluation methodology, and
- the proposed consultation for the EA.

**Open House #1** is scheduled for **Wednesday, March 28<sup>th</sup>, 2012, 4 PM to 8 PM**, at the **Town of Greater Napanee Fire Hall**, located at **66 Advance Avenue, Town of Greater Napanee**. All participants should park at rear and west side of building and enter through the rear door.

In addition to attending the open house event, you are invited to submit your comments via the project website (<http://brec.wm.com>), mail, email or fax to the address/number published below. We will also receive your comments on our project information line at (613) 388-1057.

**Randy Harris**  
**Site Manager**  
Waste Management of Canada  
RR#6, 1271 Beechwood Road  
Napanee, Ontario, K7R 3L1  
Fax: (613) 388-2785  
E-mail: [rharris@wm.com](mailto:rharris@wm.com)

**Linda Cooper**  
**Community Relations Representative**  
Waste Management of Canada  
RR#6, 1271 Beechwood Road  
Napanee, Ontario, K7R 3L1  
Fax: (613) 388-2785  
E-mail: [lcooper1@wm.com](mailto:lcooper1@wm.com)

Please note that information related to this Study will be collected in accordance with the *Freedom of Information and Protection of Privacy Act*. With the exception of personal information, all comments received will become part of the public record and may be included in Study documentation prepared for public review.

***Get Involved....Have Your Say!***

# **APPENDIX B**

## **OPEN HOUSE #1 BOARDS**

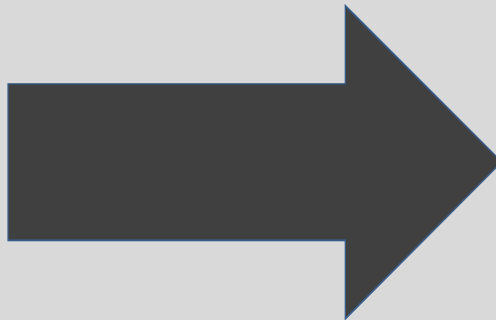


# Welcome

## Waste Management of Canada Corporation (WMCC)

is pleased to welcome you to Open House #1 for  
the Environmental Assessment (EA) for a New  
Landfill Footprint at the ***Beechwood Road  
Environmental Centre (BREC)***

Please take a few moments to browse the display  
material and talk to our staff and consultants.



Proposed Beechwood Road Environmental Centre

BREC is an integrated waste management facility to serve generators within the Town of Greater Napanee and the surrounding communities in Eastern Ontario.

The BREC will include:

- Material Recycling Facility;
- Construction and Demolition Material Facility;
- Residential Diversion Facility;
- Organics Processing Facility;
- Landfill Gas to Energy Facility;
- Electronic Waste Handling Facility; and
- Community Uses.

*Below is an artist rendering of the proposed facility which may change throughout the consultation process.*



The BREC will include a number of industrial, commercial and residential waste diversion operations that will maximize the value of the resources received. The BREC may include the following facilities:

- **Material Recycling Facility** will sort and process paper, glass, plastics, metals and electronics. The facility will help divert thousands of tonnes of material from disposal, reducing the need for new resources to create products;
- **Construction and Demolition (C & D) Material Facility** will receive construction and demolition materials for re-use and recycling;
- **Residential Diversion Facility** will allow local residents to drop off household recyclables including scrap wood, tires, plastic, metal, paper, drywall, concrete, paints, and more;
- **Organics Processing Facility** will have the capacity to receive and process compostable waste from industrial, commercial and institutional sources;
- **Landfill Gas to Energy Facility** will collect landfill gas and convert it into green, renewable energy. Further, this same technology will be used at the old, closed landfill site to create enough energy to power a greenhouse that will be constructed for community use; and
- **Electronic Waste Handling Facility** to receive and handle waste electronic products.



The Beechwood Road Environmental Centre will include a new, state-of-the-art, environmentally engineered landfill that will receive materials that cannot be diverted towards re-use, recovery or recycling.

- The new landfill footprint is the undertaking that requires EA approval, and will be constructed using the latest technology and processes to ensure the highest available standards of safety and efficiency.
- The new landfill footprint is required for disposal of residual waste materials that cannot be recycled, reused or recovered.
- With a total capacity of 13 million m<sup>3</sup>, the new landfill footprint would deliver a key service to generators in the Town of Greater Napanee and surrounding areas of Eastern Ontario.
- This new engineered landfill footprint will include a liner system, leachate collection and monitoring system to continuously protect ground and surface water.
- The facility will be able to generate six megawatts of electricity, enough energy to power the equivalent of 6,000 homes for a year.



The proposed Beechwood Road Environmental Centre builds on our long standing commitment of being an engaged and responsible corporate citizen to create significant community and economic benefits.

- **Economic Development:** The BREC will create up to 75 new, green jobs in waste diversion, disposal and green energy facilities. Economic benefits will also extend to the larger community through community host agreements, as well as funds to support local projects. In addition, revenue opportunities will be created from waste diversion activities for local processors and downstream activities related to recycling and re-use.
- **Wildlife Habitat:** An on-site wildlife habitat centre has been opened to the public and will continue to serve as an education centre for the community. Our current landfill facility has received international recognition for its contribution to wildlife habitat conservation in the form of a Wildlife Habitat Council (WHC) certification in 2006.
- **Recreation:** WMCC's current landfill operation has extensive non-operational lands. Some space will be required to support the facility's operation, but other lands will be dedicated for community uses that could include sports fields, biking and hiking trails and a leash-free dog park.
- **Community Input:** The input of the community is an important part of determining the ultimate use of non-operational areas at the BREC. Residents and community leaders have told us that they value increasing the amount of available recreational and community lands, and we are responding by setting aside space surrounding our operations for dedicated community use.



# Closure of the Richmond Landfill

The Richmond Landfill was closed on June 30, 2011 as it had reached its capacity. The closure plan, which was approved by the Ministry of the Environment (MOE), was implemented to ensure that the monitoring of groundwater and gas and leachate collection continued as required.

- The Richmond Landfill operated from 1954 until June 30, 2011. Site closure activities continued until September 30, 2011.
- The site was purchased in 1997 by WMCC and throughout the years underwent continuous improvement to ensure it met all applicable regulations, as well as our commitment to environmental protection and stewardship.
- On February 1, 2012 a Waste & Recyclable Drop Off Facility was opened at the Richmond Landfill site.
- This currently accepts electronics, household paints, metal, plastic, cardboard, glass and tires for recycling at no charge. Household and renovation waste are accepted for a disposal fee per load.





# Our Community Involvement

Responsible corporate citizenship is important to us and contributing to the health of our community will always play an important role in how Waste Management conducts business in the Town of Greater Napanee.

We provide employment for Greater Napanee residents and many of the company's employees and managers are part of this community; they live, work, and raise their families here.

Locally, we actively support various organizations as well as special events such as:

- Napanee Scarecrow Festival;
- Ducks Unlimited;
- Napanee Soccer Club;
- Canadian Cancer Society Relay for Life;
- Seniors Outreach Services Napanee Friday Bus; and
- Napanee Rod and Gun Club.



Proposed Beechwood Road Environmental Centre

The Terms of Reference (ToR) for the EA for the proposed new landfill footprint at the BREC was approved by the Minister of the Environment on February 17, 2012, with amendments. The following outlines the amendments made to the ToR as per the approval issued by the Minister.

## Amendments to the ToR

1. Remove the following bullet from Section 1.3 of the Terms of Reference, directly after the sentence that states “the generic aspects of the EA outlined in subsection 6.1(2) that will not be undertaken in the EA are”:
  - *Subsection 6.1(2)(b)(i): a description of and statement of the rationale for the undertaking (i.e. the need for the project)*
2. Include a section in the Terms of Reference under Section 3.2 that states:
  - *Section 3.2.1 – “Do Nothing” Alternative The “Do Nothing” alternative will be included for further consideration in the EA as a benchmark against which the advantages and disadvantages of Alternative #6 (i.e. the proposed BREC facility) will be compared.*

*WM will evaluate the potential impacts of Alternative #6 and the ‘do nothing’ alternative against a full range of natural, social, economic, cultural and technical criteria, generally described in Appendix B of this Terms of Reference. The specific set of environmental criteria and a comparative evaluation methodology will be confirmed in consultation with the public, Aboriginal communities and government reviewers.*



## Amendments to the ToR continued

3. Remove the first two sentences of the second paragraph in Section 3.3 that state “Other alternative methods such as the assessment of leachate treatment and liner systems will not be assessed in the EA. This is because WM has pre-determined that leachate will be collected and trucked to the Napanee Water Pollution Control Plant for treatment to MOE standards” and replace them with:
  - *An assessment of leachate treatment alternatives will be assessed in the EA. Other alternative methods such as the assessment of liner systems will not be assessed in the EA.*
4. Include the following paragraph at the beginning of Section 5.0 of the Terms of Reference:
  - *As part of the EA, WM will consult with the Ministry of the Environment to develop detailed technical studies so that the proposed site, potential contaminant pathways in the subsurface environment, and all potential environmental impacts of the proposed undertaking are clearly understood. WM will fully evaluate the advantages and disadvantages of the proposed undertaking. Wm will build on the work that has been completed for the existing Richmond landfill and demonstrate that the proposed site can be adequately characterized. This will include demonstrating that the proposed undertaking is capable of meeting the requirements under Ont. Reg. 232/98, including developing effective monitoring and contingency plans. The EA will demonstrate whether the undertaking will be consistent with the purpose of the Environmental Assessment Act, in particular the protection, conservation and wise management of the environment.*



## Amendments to the ToR continued

5. Include the following bullet in the Terms of Reference under Section 5.0, directly after the sentence that states “The assessment and evaluation of alternatives will consist of the following steps”:
  - *Identify and describe alternative leachate treatment alternatives*
6. Include the following paragraph in Appendix C of the Terms of Reference under Section 3.1 Phase 1 – Characterize Existing Environment and Predict Effects of Proposed Alternatives:
  - *WM will undertake EA studies to adequately describe baseline conditions and demonstrate that it can clearly understand the proposed site and potential environmental impacts of the proposed undertaking.*

*The project team will consult with the Ministry of the Environment, other appropriate government reviewers, members of the public and Aboriginal communities during Phase 1 of the EA studies regarding the nature and scope of the proposed EA studies, including early consultation on the development of the Geology and Hydrogeology Work Plan, summarized in Section 6.0. This early consultation will provide an opportunity for WM to receive input from regulators and interested parties on how potential impacts may be identified, which will inform the development of measures to mitigate potential environmental impacts.*



- The ToR provides a framework (or work plan) for conducting the EA studies and assessing the predicted impacts of the project.
- The EA will include the following steps:
  - **Step 1 – Overview of the Proposed Project**
    - Approved ToR, EA study Work Plans, proposed Consultation process.
  - **Step 2 – Establish new landfill footprint and leachate treatment options**
  - **Step 3 – Comparative evaluation of new landfill footprint and leachate treatment options**
    - Outline the existing conditions, apply the criteria/indicators against the new landfill footprint and leachate treatment options, comparatively evaluate the options.
  - **Step 4 – Detailed Impact Assessment of the preferred landfill footprint and leachate treatment option**
  - **Step 5 – EA Documentation and Submission to MOE**



The BREC will require various environmental approvals and permits from regulatory agencies to ensure protection of the environment and health and safety of residents.

- EA approval for a new landfill footprint and leachate treatment will be required.
- Components such as the Waste & Recyclable Drop-off facility have already been implemented at the current site.
- Some components such as the Materials Recycling Facility and C&D Recycling Facility may require additional approvals.
- As identified in the approved ToR, approvals that may be required for the BREC landfill footprint in addition to the EA, include:
  - Ontario Environmental Protection Act (EPA);
  - Ontario Water Resources Act (OWRA);
  - The Planning Act;
  - Conservation Authority Approvals; and
  - Federal Approvals.



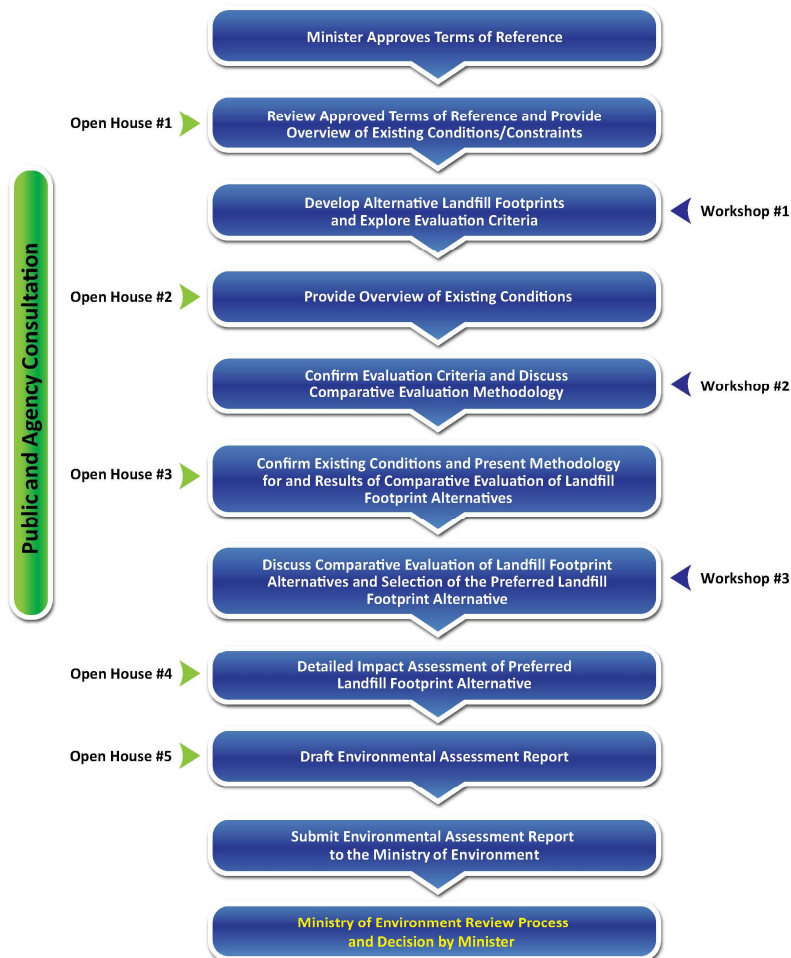
In EA terms, the project proposed by the proponent is referred to as “the Undertaking” and is the subject of the EA studies. As the approved ToR considered the need for the Undertaking and the Alternatives To the Undertaking, the EA will consider alternative ways of implementing the Undertaking, existing environmental conditions, predicted impacts of the Undertaking on the environment, mitigation measures to avoid or reduce adverse effects and the assessment of residual effects.

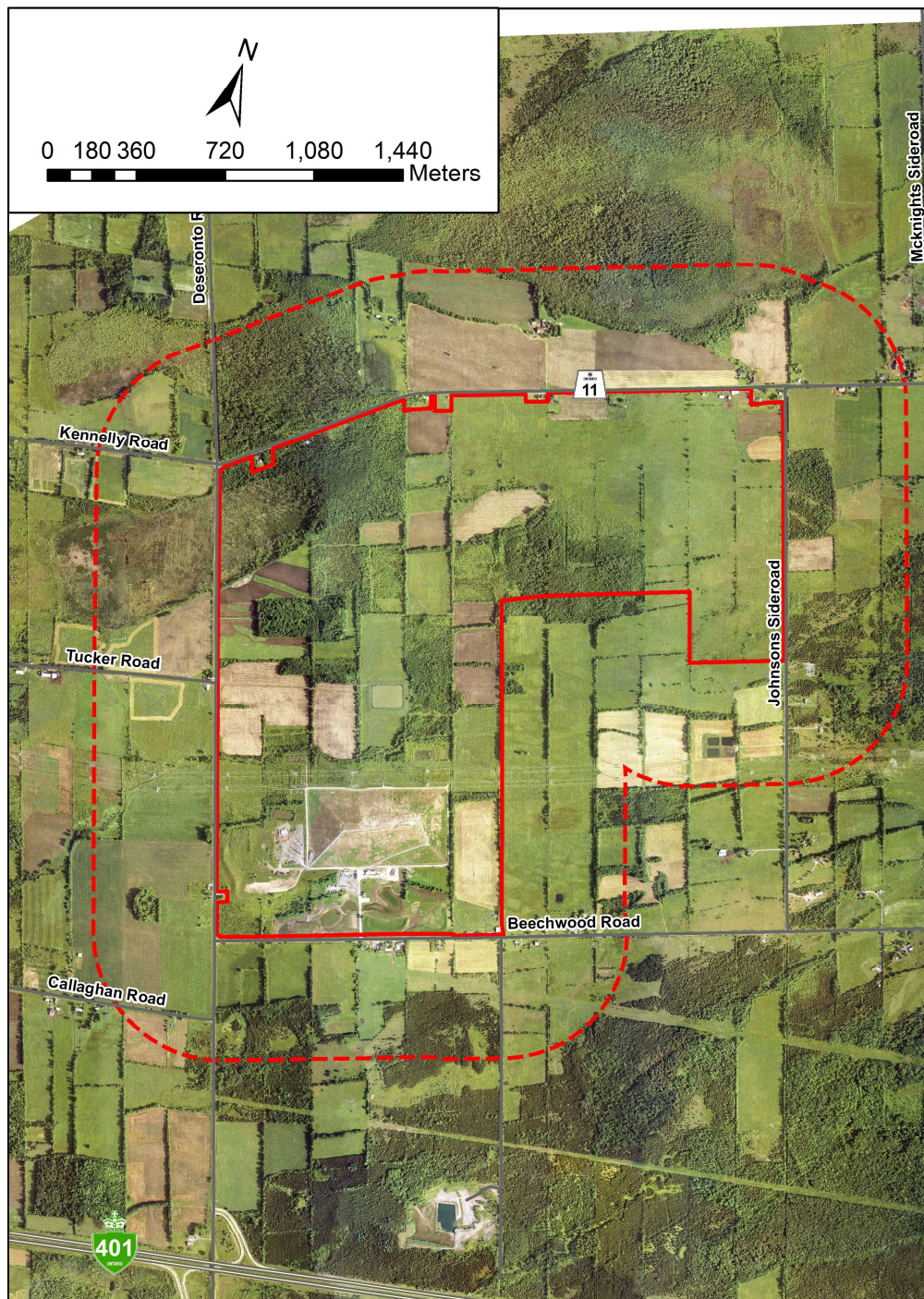
- Prior to initiating the EA studies WMCC considered a wide range of alternatives to the proposed undertaking that are available to a private business.
- During the ToR, it was concluded that the proposed EA Undertaking would be the construction/operation of a new landfill footprint.
- Leachate treatment is an operational requirement for a new landfill footprint and alternatives will be considered as part of the Undertaking.
- The new landfill footprint is one component of an integrated waste management facility, known as the BREC, to meet the demand and need for waste disposal generators primarily in the Town of Greater Napanee and surrounding communities in Eastern Ontario.





Following ToR approval by the Minister of the Environment, the next step in the EA process involves conducting studies to confirm the existing environmental conditions in the study area, as well as finalizing the Alternative Methods of site optimization. From these studies, impacts on the environment for each Alternative can be assessed and compared in order to identify the Preferred Alternative Method of carrying out the Undertaking.

## EA Process Flow Chart





## LEGEND

-  Property Boundary of Site Lands Owned/Optioned by Waste Management (The Site)
-  500 metre Site-Vicinity Study Area



- The proposed work plans (Appendix C of the approved ToR), present the scope of work required to complete the EA, including the scope of technical studies for each of the environmental components, public consultation, effects assessment, mitigation, EA documentation and submission. The proposed work plans also present schedules for conducting, reviewing and completing the technical studies.
- The ToR was amended to include the following paragraph in Appendix C of the Terms of Reference under Section 3.1 Phase 1 – Characterize Existing Environment and Predict Effects of Proposed Alternatives:
  - *WM will undertake EA studies to adequately describe baseline conditions and demonstrate that it can clearly understand the proposed site and potential environmental impacts of the proposed undertaking.*

*The project team will consult with the Ministry of the Environment, other appropriate government reviewers, members of the public and Aboriginal communities during Phase 1 of the EA studies regarding the nature and scope of the proposed EA studies, including early consultation on the development of the Geology and Hydrogeology Work Plan, summarized in Section 6.0. This early consultation will provide an opportunity for WM to receive input from regulators and interested parties on how potential impacts may be identified, which will inform the development of measures to mitigate potential environmental impacts.*



- The following tasks are outlined in the proposed work plans:
  - **Task 1** – Identify Alternative Methods for New Landfill Footprint
  - **Task 2** – Describe Environment Potentially Affected
  - **Task 3** – Identify Mitigation Measures to be Incorporated in the Design of Each Alternative
  - **Task 4** – Predict Environmental Effects for each Alternative
  - **Task 5** – Refine Mitigation Measures and Determine Net Effects
  - **Task 6** – Compare Alternatives
  - **Task 7** – Identify Preferred Alternative
  - **Task 8** – Conduct Additional Assessments
  - **Task 9-12** – EA Documentation
- Proposed work plans for the individual technical disciplines are available for review at this Open House.



- A preliminary description of the existing environment at the BREC was described in the approved ToR.
- The EA will address the following components of the environment that may be affected by the alternative methods of carrying out the undertaking:
  - Atmosphere;
  - Geology and Hydrogeology;
  - Surface Water;
  - Biology;
  - Cultural & Heritage Resources;
  - Transportation;
  - Land Use;
  - Agriculture;
  - Socio-economic;
  - Aboriginal; and
  - Site Design & Operations.
- Data for the EA will be collected and analyzed for three study areas:
  - **On-Site** – the lands owned and/or optioned by WMCC for the proposed new landfill;
  - **Site Vicinity** – the lands in the vicinity of the Site extending about 500m in all directions; and
  - **Regional** – the lands within about 25km of the Site for the Socio-economic environment.
- During the EA, the project team will collect information and conduct studies (desktop and field) to describe the environmental components listed above that may be affected by the Undertaking. This will be done for each of the Alternative Methods (alternative footprints) identified.

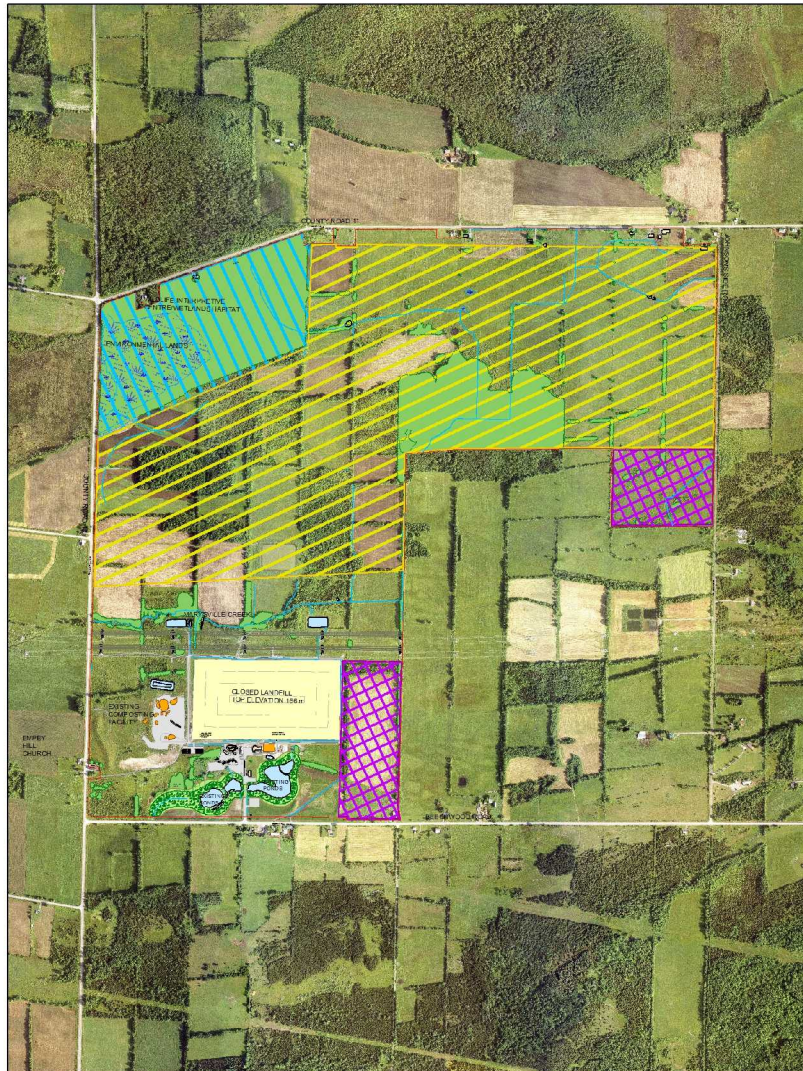


“Alternative Methods” is the assessment of the different ways of implementing the proposed undertaking. For example, the proposed new landfill footprint for residual waste could be constructed in different locations and configurations (size, height, etc.) at the BREC.

## Identifying Alternative Methods

- The approved ToR identified the study area within which Alternative Methods will be identified, bounded by Beechwood Road on the south, Deseronto Road on the west, County Road 11 on the north and Johnsons Side Road on the east.
- Constraint mapping was used to determine the preliminary land envelopes within the lands owned and optioned by WMCC for the possible location of the proposed alternative landfill footprints.
- The alternative methods are a function of a number of site-specific factors: streams, wetlands, electricity transmission facilities, transportation access, provision of perimeter buffer zones, and landfill design and operations.
- After considering these constraints a large envelope was identified for the proposed development. The preliminary envelope can be approximately divided in half creating two areas for development of a new landfill footprint alternatives (the western and eastern areas).
- It is anticipated that two or more alternatives will be identified during the EA for both the western and eastern halves of the envelope. A comparative evaluation of alternative landfill footprints will be conducted and an impact assessment on the preferred landfill footprint will be carried out.
- In addition, as part of the operational component of the landfill footprint, leachate treatment alternatives will also be identified and assessed.
- The preferred landfill footprint will be refined and finalized in consultation with the public, Government Review Team (GRT), First Nations communities and other stakeholders during the EA process.





## LEGEND

-  PROPERTY BOUNDARY OF LANDS OWNED/OPTIONED BY WASTE MANAGEMENT
-  POTENTIAL DEVELOPMENT AREA FOR BREC, INFRASTRUCTURE, AND COMMUNITY LANDS
-  POTENTIAL INFRASTRUCTURE AREA
-  CONSTRAINT HYDRO CORRIDOR
-  CONSTRAINT MARYSVILLE CREEK
-  CONSTRAINT WETLAND CONSERVATION AREA
-  WATER BODY
-  WOODED AREA
-  WETLAND
-  BUILDING FOOTPRINT
-  ROADS/PAVED AREAS
-  WATERCOURSE
-  TRANSMISSION LINES AND TOWERS



Preliminary Evaluation Criteria and Indicators were outlined in Appendix B of the Approved ToR and may be broadly grouped into Environmental components. There will be an opportunity for review and comment on these Evaluation Criteria and Indicators during the EA. These criteria form the basis for characterizing existing environmental conditions, for assessing potential adverse effects of the Undertaking, comparing Alternative Methods, and help to identify a preferred alternative.

Environmental Criteria	
Atmosphere	Air quality, Noise, Odour
Geology & Hydrogeology	Groundwater quality, Groundwater flow
Surface Water	Surface water quality, Surface water quantity
Biology	Terrestrial ecosystems, Aquatic ecosystems
Cultural & Heritage Resources	Cultural landscape, Built heritage, Archaeological resources
Transportation	Effects on airport operations, Effects from truck traffic along access roads
Land Use	Effects on current and planned future land uses
Agriculture	Effects on agricultural land and agricultural operations
Socio-economic	Effects on the cost of services to customers, Continued service to customers, Economic effects to local municipality, Effects on recreational resources, Visual impact of the facility
Aboriginal	Potential effects on aboriginal communities
Site Design & Operations	Site design and operations characteristics

A full description of the Criteria, Indicators, Rationale for their selection and Data Sources are available for comment at this Public Open House.



## **Open House #1 – Review of Approved ToR**

Mar. 28 – Town of Greater Napanee Fire Hall, 66 Advance Avenue, from 4pm to 8pm.



## **Workshop #1 – Landfill footprint options**

Workshop #1 will invite participants to identify and develop new landfill footprints and locations for the various BREC facility components within the envelope areas identified during the ToR.



## **Open House #2 – Landfill footprint options and ancillary facilities**

EA Open House #2 will present the results of the workshop and further work by WMCC to describe possible new landfill footprints and BREC facility component layouts. The new landfill footprints represent alternative methods of proceeding with the landfill component of the BREC facility. An overview of the assessment methodologies that will be used to predict and assess impacts of each alternative will be presented.



## **Workshop #2 – Evaluation methodology**

Workshop #2 will discuss the comparative evaluation methodology and invite participants to provide input on the relative importance of evaluation criteria.



## **Open House #3 – Existing conditions and comparative evaluation**

Open House #3 will present a summary of studies to describe existing environmental conditions. The results of impact prediction assessments of the alternatives will be presented. The methodology to present the comparative evaluation of Alternative Methods and the identification of the preferred alternative will be presented.



## **Workshop #3 – Comparative evaluation and preferred alternative**

Workshop #3 will invite participants to discuss and provide input to the comparative evaluation of Alternative Methods and identification of a preferred alternative.



## **Open House #4 – Impact Assessment of the preferred alternative**

EA Open House #4 will present the results of the comparative evaluation of alternatives and identification of a preferred alternative, and the findings of the overall assessment of the BREC facility and cumulative impact assessments of a new landfill footprint and other projects in the future in the area.



## **Open House #5 – EA Report**

EA Open House #5 will present a summary of the EA Report.

Consultation events are your opportunity to get involved in the EA process to let us know your opinion and ideas about the proposed development at the BREC site.



- A Project Advisory Committee (PAC) has been created for the EA process. It is comprised of local politicians and residents, who are members of the Community Liaison Committee (CLC) for the Richmond Landfill.
- The primary function of the PAC is to advise WMCC on consultation and communication matters in relation to the EA process. The PAC will also provide feedback to us on the ongoing progress and outcomes of consultation and communication efforts for the EA process.



# Next Steps

Over the coming months, we will continue working on the EA for the proposed Undertaking. There are a lot of opportunities for you to get involved in the process and make your views known.

Get involved in the BREC EA and make your views known:

- Workshop #1 is planned for Spring 2012. The date, time and location will be determined over the coming weeks. Please sign-up at the Open House if you wish to be involved. Registered participants will be notified in advance of the Workshop.
- Please include your email address if you wish to receive further information on the project as well as the future Workshop.
- Attend future Open Houses and Workshops.
- Meet with us individually or in groups to ask questions, express your viewpoints or provide your input.
- Visit our website <http://BREC.wm.com> to get more information or to provide your comments.



# **APPENDIX C**

## **OPEN HOUSE #1 COMMENT SHEET**

## COMMENT SHEET

WASTE MANAGEMENT OF CANADA  
BEECHWOOD ROAD ENVIRONMENTAL CENTRE ENVIRONMENTAL ASSESSMENT

PUBLIC OPEN HOUSE #1 – MARCH 2012

NAME: \_\_\_\_\_ ADDRESS: \_\_\_\_\_

EMAIL: \_\_\_\_\_ PHONE NUMBER: \_\_\_\_\_

DATE: \_\_\_\_\_

*Thank you for taking the time to provide us with your comments. Please include your mailing address. Your address increases the analytical value of your input as it allows members of the various study teams to evaluate issues geographically.*

1. Please provide any general comments regarding this Open House

---

---

---

---

2. Do you have any suggestions or comments on the elements to be included as part of the Beechwood Road Environmental Centre?

\_\_\_ YES \_\_\_ NO

---

---

---

---

3. Do you have any specific comments, concerns or recommendations in relation to the EA Work Plans presented at this Open House?

\_\_\_ YES \_\_\_ NO

---

---

---

---

4. Do you have any comments, concerns or recommendations regarding the proposed Study Areas presented in the Work Plans?

\_\_\_ YES \_\_\_ NO

---

---

---

---

5. Do you have any specific comments, concerns or recommendations regarding the proposed evaluation criteria, indicators, and/or data sources?

\_\_\_ YES \_\_\_ NO

---

---

---

---

6. Do you have any comments, concerns or recommendations regarding the constraints identified to establish the potential landfill footprint envelopes?

\_\_\_ YES \_\_\_ NO

---

---

---

---

7. Do you have any additional comments regarding the Beechwood Road Environmental Centre Environmental Assessment?

---

---

---

---

8. Would you like to be notified of future activities? If yes, please ensure to include your contact information at the beginning of this form.

\_\_\_ YES \_\_\_ NO